



# NEWS RELEASE

California Department of Forestry & Fire Protection

CONTACT: CAL FIRE PIO (916) 651-3473 [Calfire.dutypio@fire.ca.gov](mailto:Calfire.dutypio@fire.ca.gov)

RELEASE DATE: January 19, 2025

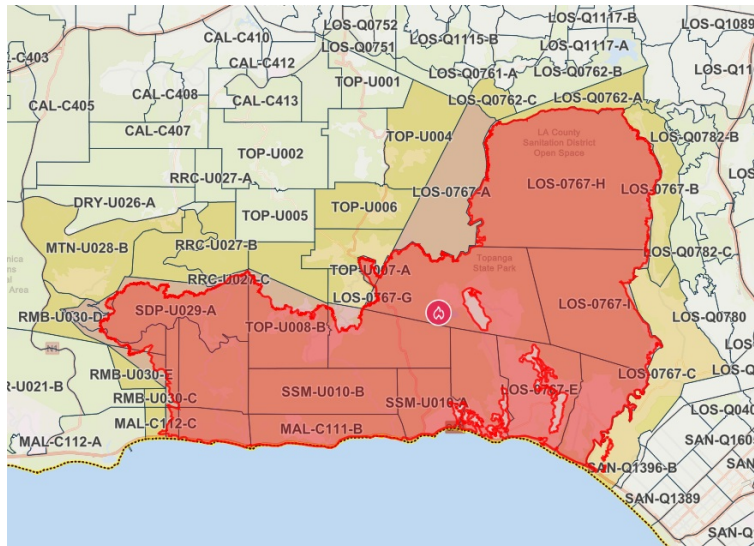
## RESIDENTS IMPACTED BY THE EATON AND PALISADES FIRES CAN GET REAL-TIME EVACUATION AND REPOPULATION NOTIFICATIONS

**Sacramento** – Los Angeles area residents affected by the Palisades and Eaton fires can receive real time information on their evacuation status. Los Angeles uses *Genasys Protect* to keep residents informed about evacuations. All information provided on this application comes from Los Angeles emergency service teams.

Displaced residents are encouraged to sign up for the online [application](#) that provides address-specific evacuation information, including push notifications when evacuation status changes.

Here's how the application works:

- Download the [app](#) on your smartphone or desktop.
  - Click 'download app' on the left side of the screen.
  - Enable notifications so you're notified when your evacuation status changes.
- Alerts can be set up for multiple address locations.



It is critical that residents returning to their homes after an evacuation follow law enforcement guidance including traffic control signs and take safety precautions.

The California Department of Forestry and Fire Protection (CAL FIRE), Los Angeles County Fire, Los Angeles City Fire, and the USDA Forest Service, along with resources from across the nation and with international support, are making significant progress in the Palisades and Eaton Fire areas. Law enforcement and public safety officials are continuously reassessing evacuation orders and warnings to ensure it is safe for residents to return.

The ongoing reassessment of evacuation orders is crucial to adapting to changing conditions

and ensuring the area is safe before allowing residents to return home.

Some specific neighborhoods outside the Palisades fire perimeter are being repopulated and safety remains a top priority as recovery continues.

For information on returning home after a wildfire visit [readyforwildfire.org](https://readyforwildfire.org).

More important safety tips:

- **ADDRESS VERIFICATION REQUIREMENT:** When approaching a roadblock, residents must provide proof of residency. Acceptable forms of identification are a photo ID that displays the resident's name, photo, and physical address. Please have these documents ready to ensure a smooth verification process.
- **AWARENESS:** Stay vigilant on current fire conditions. Please continue to adhere to road closures and evacuation orders or warnings. If you see electrical wires on the ground, stay clear and contact Edison immediately. Power may be out when you return home.
- **GENERATOR SAFETY:** Those who may be utilizing backup generators are encouraged to review [safety information](#).
- **FIRE SAFETY:** Trees and poles with deep charring, particularly if still smoldering, should be considered hazardous. Fire crews and utility companies will remain in the area to mitigate fire concerns, restore utilities, and bolster infrastructure.



###

CAL FIRE Communications | 715 P St. | Sacramento, CA 95814 US

[Unsubscribe](#) | [Constant Contact Data Notice](#)



Try email marketing for free today!