

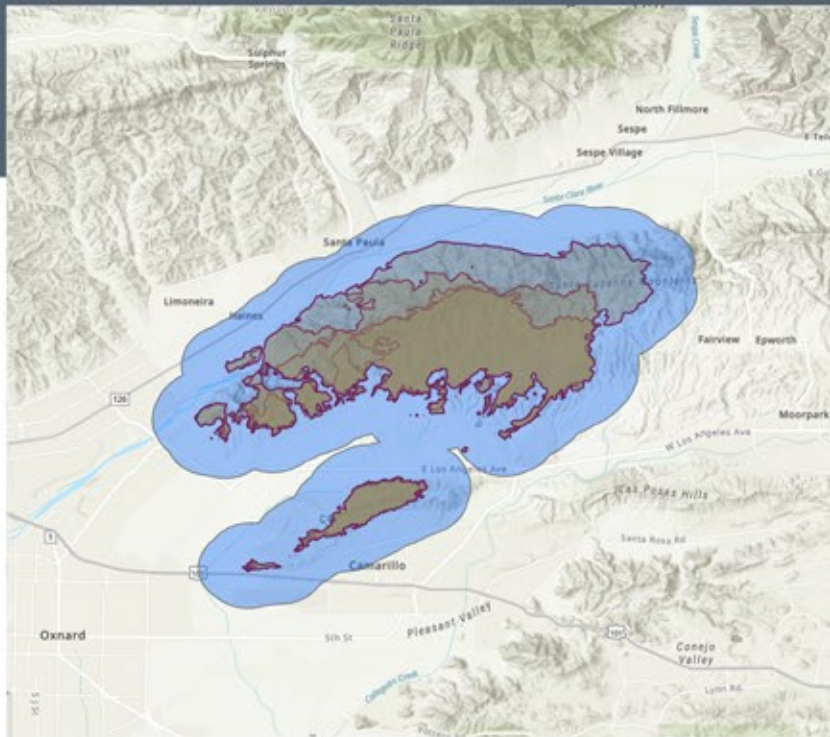


POPULATION PROFILE

MOUNTAIN Incident



Area: 81.27 square miles



38,037

Population

13,395

Total Households

2.82

Avg Size of Household

5.8%

Unemployment Rate

41.4

Median Age

29,222

Household Has Internet Access

11,625

Household Owns Computer

WORKFORCE

34,102

Daytime Population

2,454

Veteran Total

1,526

Total Businesses

14,455

Total Employees

11,091

White Collar Workers

3,448

Blue Collar Workers

2,232

Service Workers

AT RISK POPULATION



3,744

Households With Disability



8,197

Population 65+



578

Households Without Vehicle



School Enrollment

414

Nursery & Preschool

618

Kindergarten

1,770

Grade 1-4

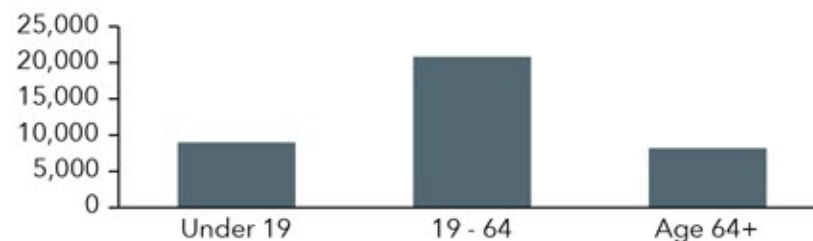
1,764

Grade 5-8

2,151

Grade 9-12

POPULATION BY AGE



Year Structure Built

Built: 2020/Later	26
Year Built: 2010-2019	1,142
Year Built: 2000-2009	1,149
Year Built: 1990-1999	1,462
Year Built: 1980-1989	1,618
Year Built: 1970-1979	2,917
Year Built: 1960-1969	3,002
Year Built: 1950-1959	1,377
Year Built: 1940-1949	349
Year Built: 1939 or Earlier	589

2018-2022 Heating Fuel

Utility Gas	9,307
Tank/LP Gas	375
Electricity	2,438
Oil/Kerosene	1
Coal/Coke	0
Wood	15
Solar Energy	102
Other Fuel	30
No Fuel	566

Language Spoken	Age 5-17	18-64	Age 65+	Total
English Only	3,908	13,365	6,116	23,389
Spanish	2,090	6,650	946	9,686
Spanish & English Well	2,066	4,715	646	7,427
Spanish & English Not Well	22	1,244	143	1,409
Spanish & No English	2	691	158	851
Indo-European	91	715	202	1,008
Indo-European & English Well	91	677	185	953
Indo-European & English Not Well	0	38	8	46
Indo-European & No English	0	0	9	9
Asian-Pacific Island	106	620	482	1,208
Asian-Pacific Isl & English Well	106	469	427	1,002
Asian-Pacific Isl & English Not Well	0	152	46	198
Asian-Pacific Isl & No English	0	0	9	9
Other Language	79	277	85	441
Other Language & English Well	79	252	85	416
Other Language & English Not Well	0	25	0	25
Other Language & No English	0	0	0	0