

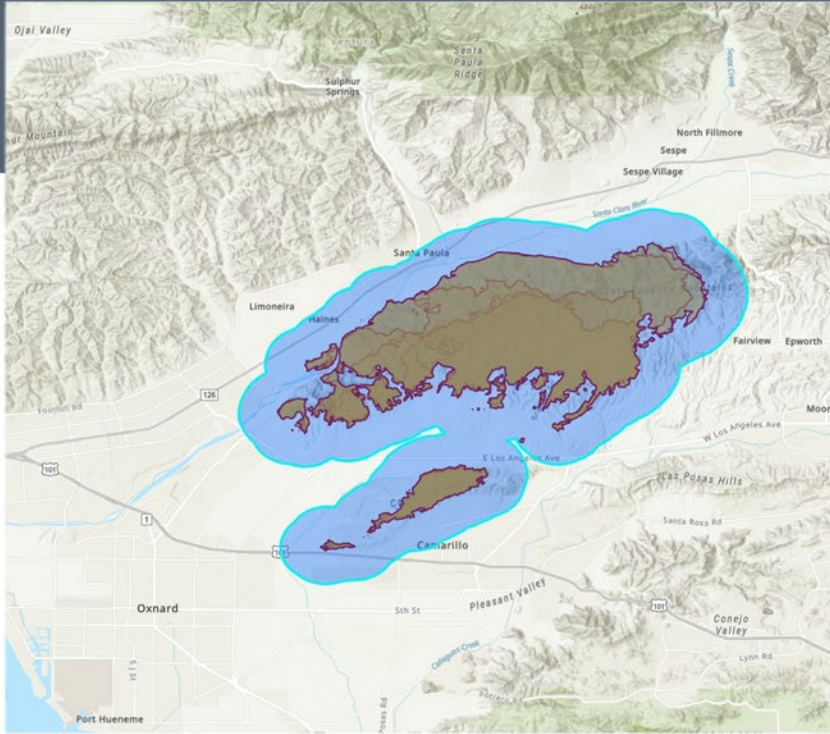


POPULATION PROFILE

MOUNTAIN Incident



Area: 83.74 square miles



39,935

Population

13,946

Total Households

2.84

Avg Size of Household

6.0%

Unemployment Rate

41.1

Median Age

30,584

Household Has Internet Access

12,062

Household Owns Computer

WORKFORCE

35,743

Daytime Population

2,486

Veteran Total

1,567

Total Businesses

14,954

Total Employees

11,651

White Collar Workers

3,731

Blue Collar Workers

2,324

Service Workers

AT RISK POPULATION



3,884

Households With Disability



8,415

Population 65+



600

Households Without Vehicle



School Enrollment

419

Nursery & Preschool

635

Kindergarten

1,870

Grade 1-4

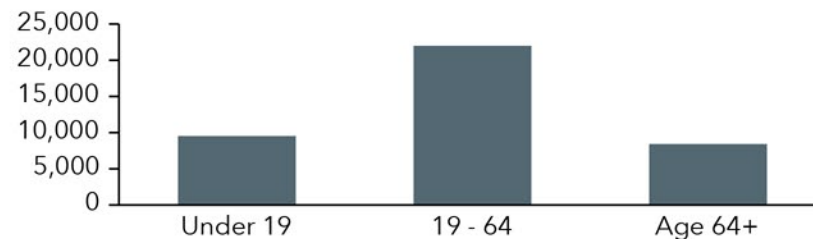
1,809

Grade 5-8

2,240

Grade 9-12

POPULATION BY AGE



Year Structure Built

Built: 2020/Later	27
Year Built: 2010-2019	1,144
Year Built: 2000-2009	1,178
Year Built: 1990-1999	1,472
Year Built: 1980-1989	1,679
Year Built: 1970-1979	3,081
Year Built: 1960-1969	3,041
Year Built: 1950-1959	1,501
Year Built: 1940-1949	378
Year Built: 1939 or Earlier	675

2018-2022 Heating Fuel

Utility Gas	9,670
Tank/LP Gas	385
Electricity	2,514
Oil/Kerosene	1
Coal/Coke	0
Wood	18
Solar Energy	102
Other Fuel	30
No Fuel	597

Language Spoken	Age 5-17	18-64	Age 65+	Total
English Only	3,987	13,760	6,187	23,934
Spanish	2,249	7,290	1,060	10,599
Spanish & English Well	2,222	5,160	692	8,074
Spanish & English Not Well	24	1,331	157	1,512
Spanish & No English	2	800	211	1,013
Indo-European	92	717	203	1,012
Indo-European & English Well	92	678	186	956
Indo-European & English Not Well	0	39	8	47
Indo-European & No English	0	0	9	9
Asian-Pacific Island	107	623	484	1,214
Asian-Pacific Isl & English Well	107	471	428	1,006
Asian-Pacific Isl & English Not Well	0	152	47	199
Asian-Pacific Isl & No English	0	0	9	9
Other Language	79	277	85	441
Other Language & English Well	79	252	85	416
Other Language & English Not Well	0	25	0	25
Other Language & No English	0	0	0	0