



Jackson Demonstration State Forest

Caspar-Big River Recreation Map



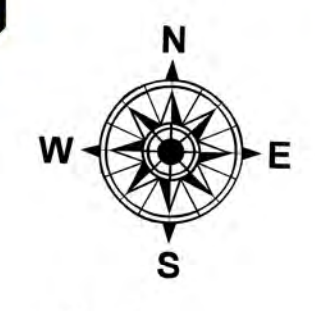
- State Highway
- Notable County Road (road dashed where not paved)
- Primary Forest Road
- Secondary Forest Road
- Decommissioned Road
- Other Road

Restrictions: JDSF campsites, roads, or trails may be closed at any time for maintenance, seasonal restrictions, safety concerns, environmental protection, or other reasons. No motorized vehicles allow off designated roads, behind closed gates, barricades, or where posted. Visitors must have a valid drivers license to operate vehicles in the forest. Contact JDSF headquarters about seasonal closures.

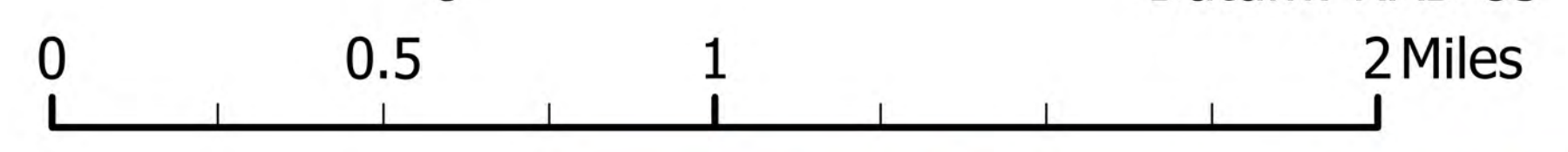
No dispersed camping

Disclaimer: The map and any data within shall be used for reference only. The State of California and CAL FIRE make no representations or warranties regarding the accuracy of the data or maps. Neither the State nor the Department shall be liable under any circumstances for any direct, special, incidental or consequential damage with respect to any claim by any user or third party on account of or arising from the use of data or maps.

Revision Date: 4/9/2025



Scale: 1:16,000
Projection: Teale Albers (California)
Datum: NAD 83

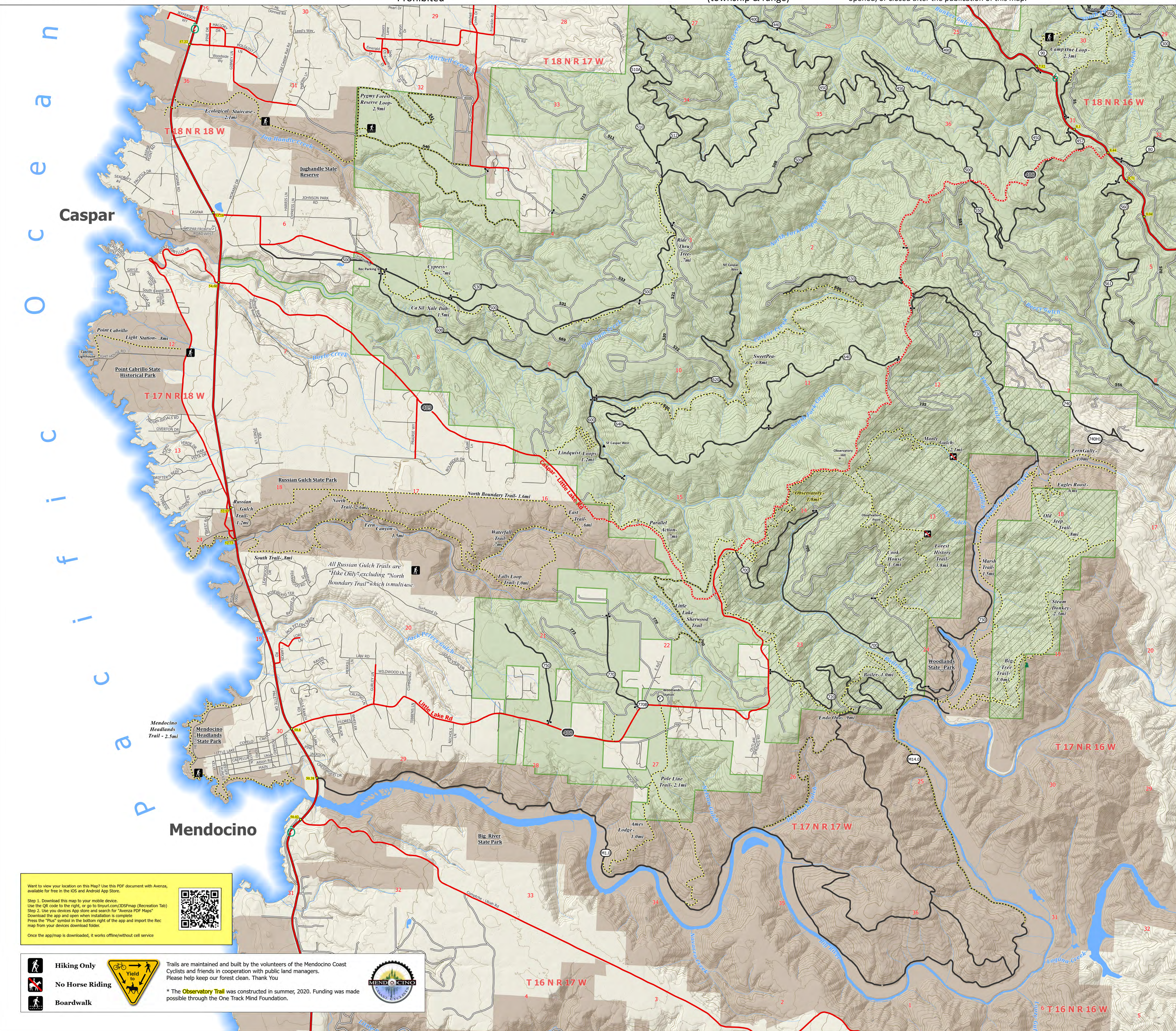


- Jackson Demonstration State Forest Boundary
- California State Parks
- Fire Arm Use Prohibited
- Streams
- Public Trails
- Trails on Road
- Highway Mile Marker

Gate
JDSF Gates: gates may be locked for public safety or natural resource protection.

Public Land Survey
(section) 27 **T18N R18W**
(township & range)

JDSF Roads: roads may be built, abandoned, opened, or closed after the publication of this map.



n
o
c
e
a
n
i
f
i
c
a
n
c
e
n
t
r
e
s
o
f
t
h
e
c
o
a
s
t
o
f
c
a
l
i
f
o
r
e
s
t
r
y

Want to view your location on this Map? Use this PDF document with Avenza, available for free in the iOS and Android App Store.

Step 1. Download this map to your mobile device. Use the QR code to the right, or go to tinyurl.com/JDSFmap (Recreation Tab)

Step 2. Use your device App Store and search for "Avenza PDF Maps". Download the app and open when installation is complete. Press the "Plus" symbol in the bottom right of the app and import the Rec map from your devices download folder.

Once the app/map is downloaded, it works offline/without cell service.

Hiking Only

No Horse Riding

Boardwalk

Trails are maintained and built by the volunteers of the Mendocino Coast Cyclists and friends in cooperation with public land managers. Please help keep our forest clean. Thank You

* The **Observatory Trail** was constructed in summer, 2020. Funding was made possible through the One Track Mind Foundation.