



# Jackson Demonstration State Forest

California Department of Forestry and Fire Protection-Mendocino Unit

## Forest Overview Map

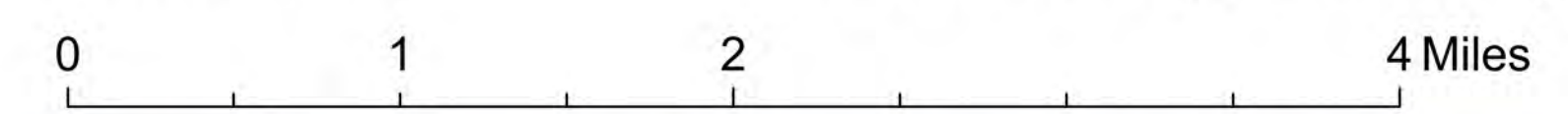
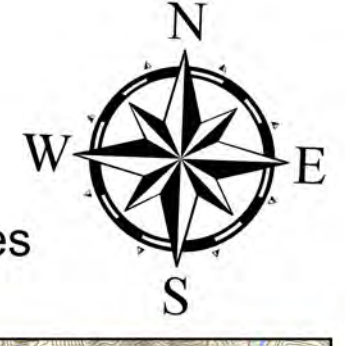


**Trail Use and Etiquette**  
Most trails are 'multi-use' (support hikers, bikers, and equestrians). Be mindful of who has the right-of-way (left) while recreating, and be mindful of use restrictions (right).

- Hiking Only
- No Horse Riding
- Boardwalk

Projection: Teale Albers  
Datum: NAD 83

1:36,000  
Revision Date: 4/9/2025

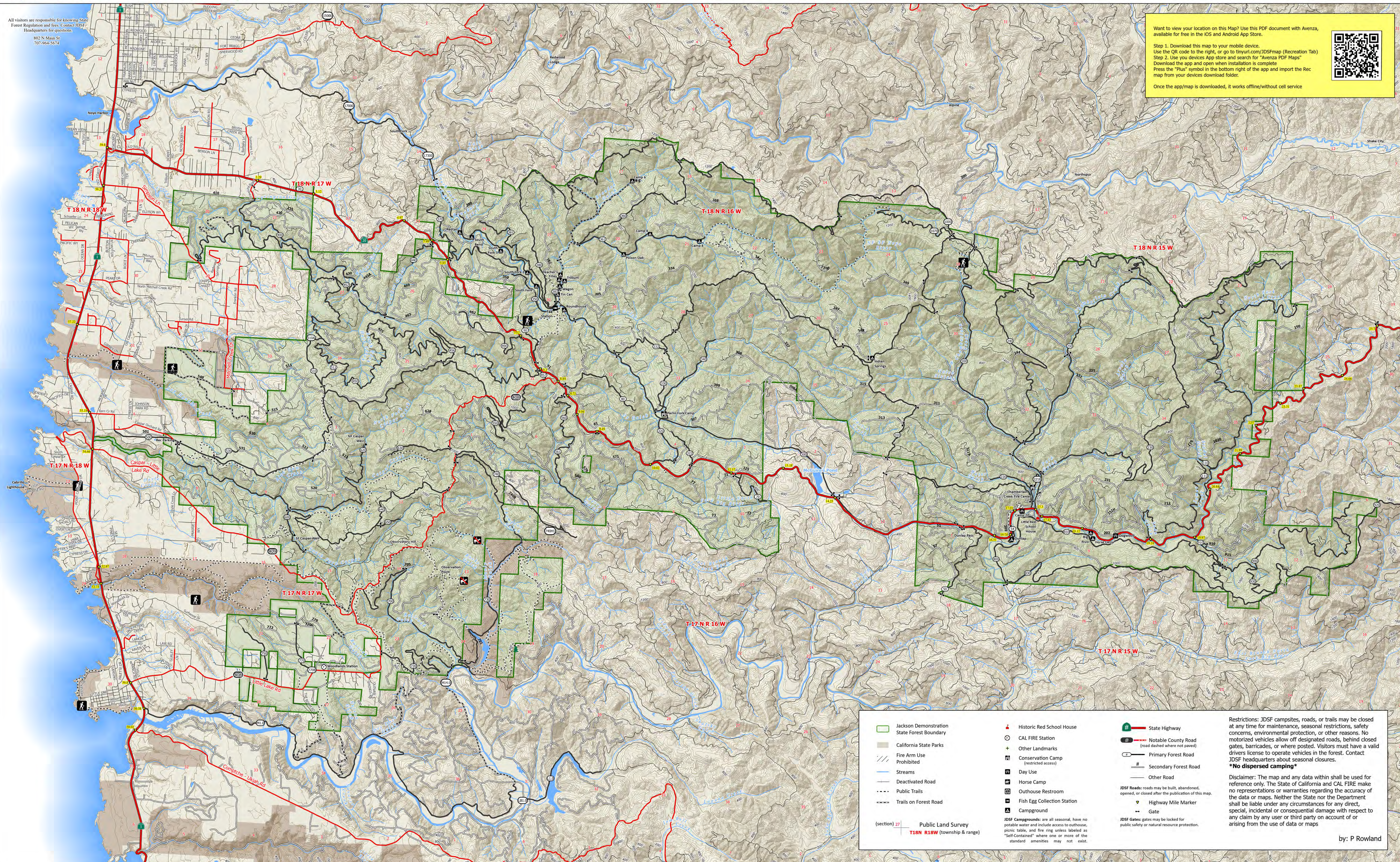


All visitors are responsible for knowing State Forest Regulation and fees. Contact JDSF Headquarters for questions.  
802 N Main St  
707-964-5674

Want to view your location on this Map? Use this PDF document with Avenza, available for free in the iOS and Android App Store.

Step 1. Download this map to your mobile device.  
Use the QR code to the right, or go to [tmyurl.com/JDSFmap](https://tmyurl.com/JDSFmap) (Recreation Tab)  
Step 2. Use your device's App store and search for "Avenza PDF Maps".  
Download the app and open when installation is complete.  
Press the "Plus" symbol in the bottom right of the app and import the Rec map from your device's download folder.

Once the app/map is downloaded, it works offline/without cell service



Jackson Demonstration State Forest Boundary	Historic Red School House	State Highway	<p>Restrictions: JDSF campsites, roads, or trails may be closed at any time for maintenance, seasonal restrictions, safety concerns, environmental protection, or other reasons. No motorized vehicles allow off designated roads, behind closed gates, barricades, or where posted. Visitors must have a valid drivers license to operate vehicles in the forest. Contact JDSF headquarters about seasonal closures.</p> <p><b>*No dispersed camping*</b></p> <p>Disclaimer: The map and any data within shall be used for reference only. The State of California and CAL FIRE make no representations or warranties regarding the accuracy of the data or maps. Neither the State nor the Department shall be liable under any circumstances for any direct, special, incidental or consequential damage with respect to any claim by any user or third party on account of or arising from the use of data or maps</p> <p>by: P Rowland</p>
California State Parks	CAL FIRE Station	Notable County Road (road dashed where not paved)	
Fire Arm Use Prohibited	Other Landmarks	Primary Forest Road	
Streams	Conservation Camp (restricted access)	Secondary Forest Road	
Deactivated Road	Day Use	Other Road	
Public Trails	Horse Camp	JDSF Roads: roads may be built, abandoned, opened, or closed after the publication of this map.	
Trails on Forest Road	Outhouse Restroom	Highway Mile Marker	
Public Land Survey	Fish Egg Collection Station	Gate	
T18N R18W (township & range)	Campground	JDSF Gates: gates may be locked for public safety or natural resource protection.	
	JDSF Campgrounds: are all seasonal, have no potable water and include access to outhouse, picnic table, and fire ring unless labeled as "Self-Contained" where one or more of the standard amenities may not exist.		