

# CAL FIRE NEWS RELEASE

California Department of Forestry and Fire Protection  
Jackson Demonstration State Forest



[https://linktr.ee/calfiremeu\\_1100](https://linktr.ee/calfiremeu_1100)



**CONTACT:**  
JDSF Office  
(707) 964-5674

**DATE OF RELEASE:**  
August 1<sup>st</sup>, 2024

## Mendocino Unit

### **PUBLIC NOTICE (ORDER OF CLOSURE) TEMPORARY AREA CLOSURE Eddy-Covariance Flux Tower Construction**

**Mendocino County, CA** – The California Department of Forestry and Fire Protection (CAL FIRE) is hosting the construction of two eddy-covariance flux towers on Jackson Demonstration State Forest (JDSF) in Mendocino County. The towers will be long-term installations featuring canopy and ground level instrumentation to directly and continuously measure the ecosystem's CO<sub>2</sub>, water, and energy fluxes and a suite of meteorological and soil variables, particularly precipitation, fog, and soil moisture. The construction and management of the towers will be a joint project between the Lawrence Berkeley National Laboratory and University of California Davis.

Area closure is for public and worker safety during operations. Maps and information regarding the closure have been posted in locations near the project sites. Limited tree removal will be required to prepare the site for tower construction. Active operations are dangerous and include hazards, such as falling trees, heavy equipment, and widow makers (broken tree limbs suspended in the canopies of other trees). No wood products will be commercialized as part of this project. Two separate areas will be closed to the public. Closures will include Road 510, between Road 500 and Road 510c, and an unnamed spur road connecting to Road 320. The associated construction sites along these roads will also be closed to the public. The roads are expected to be re-open by November 1st, 2024.

This notice is in accordance with Sections 1438 and 1439, Title 14, of the California Code of Regulations, and to ensure the health and safety of the public and personnel engaged in operations, the Department of Forestry and Fire Protection (CAL FIRE) hereby closes the area subject to construction operations, as depicted in the attached map(s) (the Closed Area). The Closed Areas may be accessed only by: (1) CAL FIRE personnel engaged in the inspection of operations or other law enforcement; (2) personnel of the Licensed Timber Operator or other contractor associated with the project, only to the extent that such personnel are actively engaged in the conduct of operations; (3) public safety personnel engaged in fire protection, law enforcement, or emergency medical services; or (4) such others as the JDSF State Forest Manager or his/her superiors may deem appropriate and who have written authorization to enter the Closed Area. All other members of the public are hereby excluded from the Closed Area and will be subject to misdemeanor prosecution pursuant to Section 4656.3 of the Public Resources Code.

For additional information, including a map of JDSF, please contact our office or the website listed below.

By: Brandon Gunn  
Mendocino Unit Chief

###

For more information about the Jackson Demonstration State Forest visit:  
<https://www.fire.ca.gov/what-we-do/natural-resource-management/demonstration-state-forests/jackson-demonstration-state-forest>



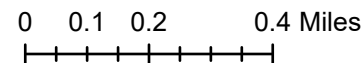
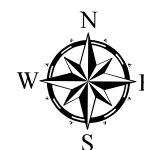
# JACKSON DEMONSTRATION STATE FOREST

## Area Closure Map 1 of 2 7/31/2024

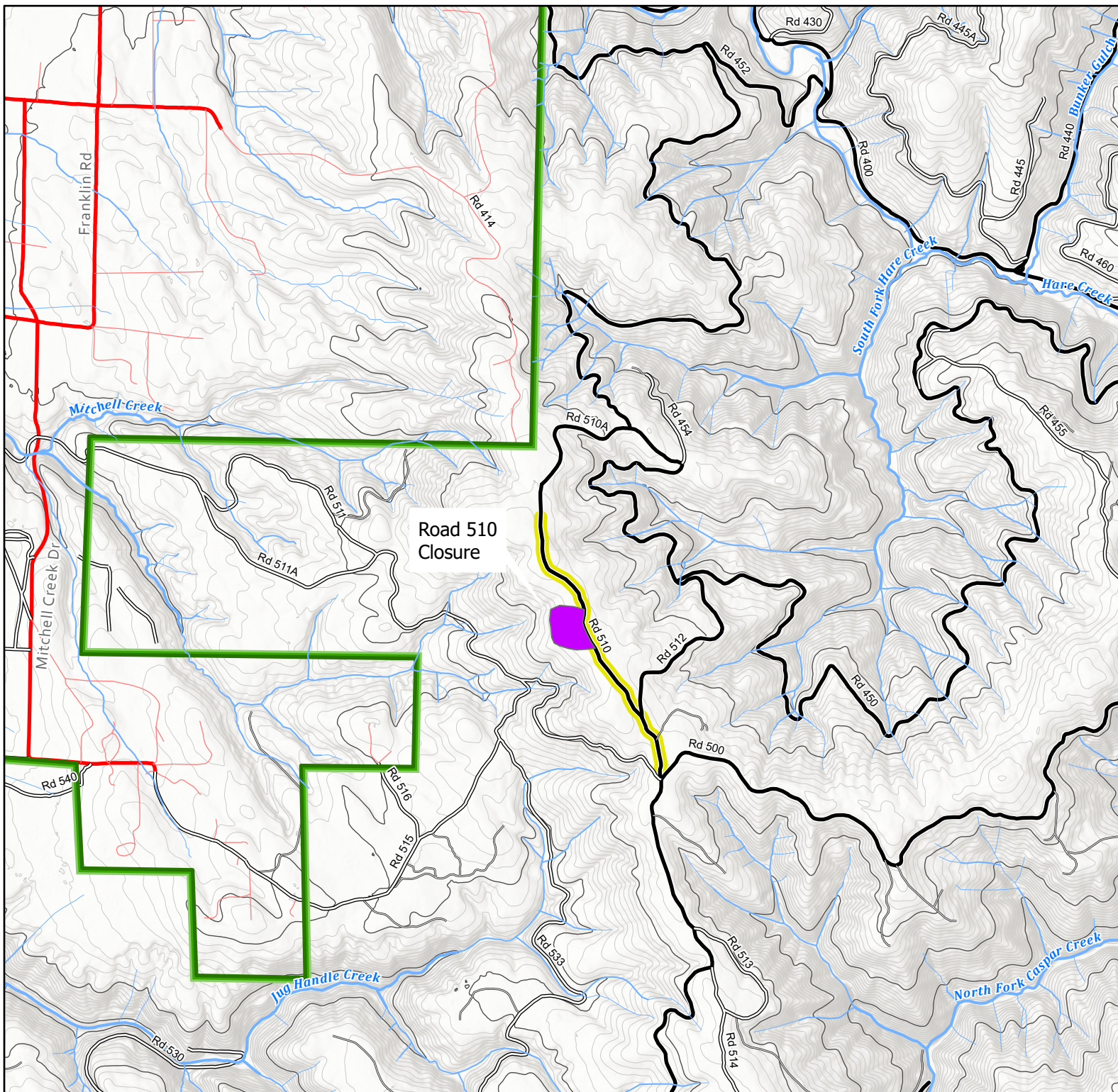
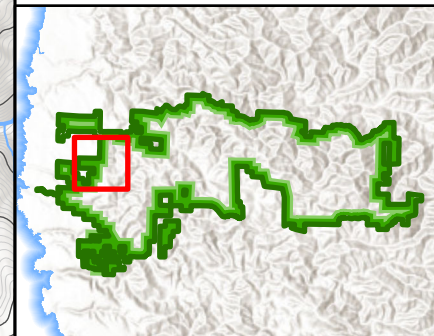
- Road Closure
- Area Closure
- JDSF Property Line

### Roads by Type

- Highway
- County
- City
- Private
- Primary Forest Rd
- Secondary Forest Rd
- Spur Rd



### Extent Indicator



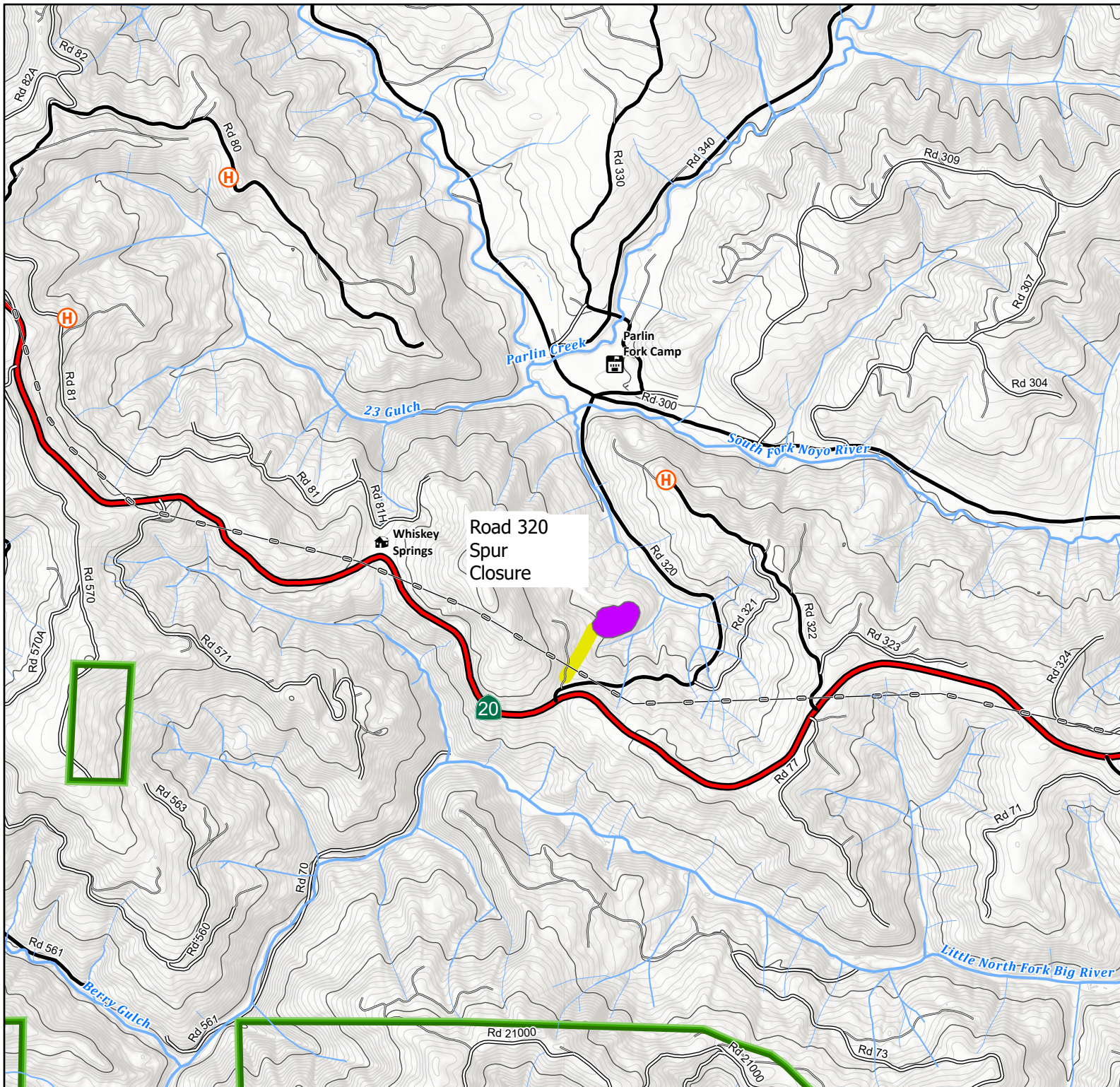
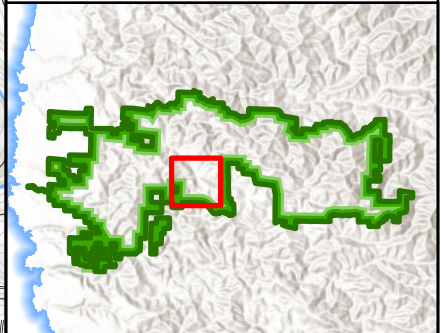
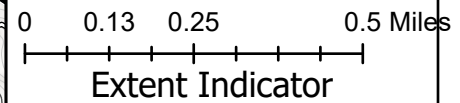


Area Closure Map  
2 of 2  
7/31/2024

- Road Closure
- Area Closure
- JDSF Property Line

Roads by Type

- Highway
- County
- City
- Private
- Primary Forest Rd
- Secondary Forest Rd
- Spur Rd



Road 320  
Spur  
Closure