

CAL FIRE NEWS RELEASE

California Department of Forestry and Fire Protection
Jackson Demonstration State Forest

https://linktr.ee/calfiremeu_1100



CONTACT:
JDSF Office
(707) 964-5674

DATE OF RELEASE:
August 6, 2024

Mendocino Unit

PUBLIC NOTICE (ORDER OF CLOSURE) TEMPORARY AREA CLOSURE Soda Gulch Timber Sale

Mendocino County, CA – The California Department of Forestry and Fire Protection (CAL FIRE) Jackson Demonstration State Forest (JDSF) is conducting timber operations, as defined in section 4527 of the Public Resources Code, on a Timber Harvest Plan (THP). The THPs is Soda Gulch (1-20-00041-MEN). Areas where timber operations are occurring will be closed beginning immediately until September 27, 2024, or until formally rescinded.

Area closure is for public and worker safety during timber operations. Maps and information regarding the closure have been posted in locations near the THP. Active timber operations are dangerous and include hazards, such as falling trees, heavy equipment, and widow makers (broken tree limbs suspended in the canopies of other trees).

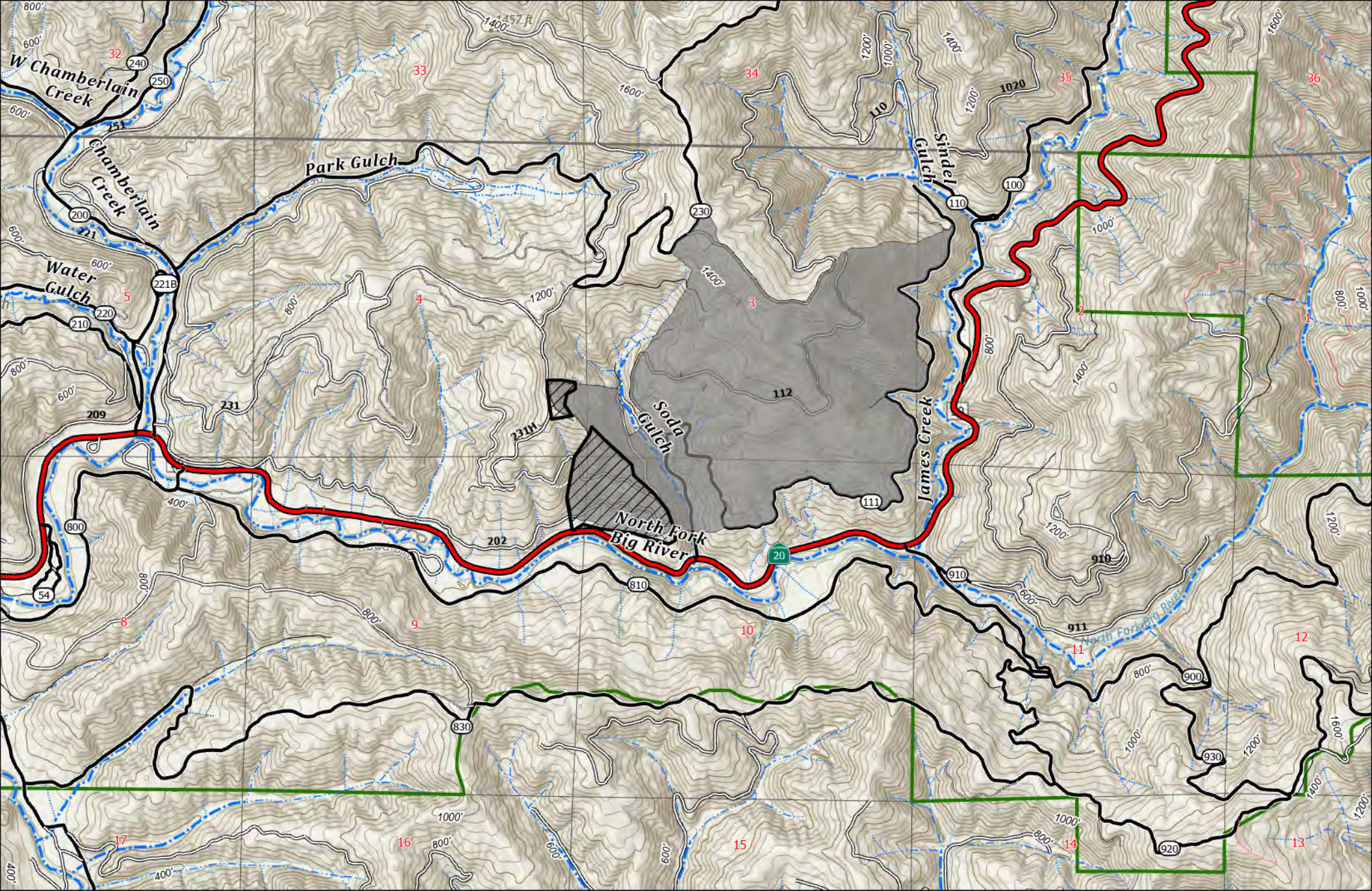
This notice is in accordance with Sections 1438 and 1439, Title 14, of the California Code of Regulations, and to ensure the health and safety of the public and personnel engaged in timber operations, the Department of Forestry and Fire Protection (CAL FIRE) hereby closes the area subject to timber operations under the THP, as depicted in the attached map(s) (the Closed Area). The Closed Areas may be accessed only by: (1) CAL FIRE personnel engaged in the inspection of timber operations or other law enforcement; (2) personnel of the Licensed Timber Operator associated with the THP, only to the extent that such personnel are actively engaged in the conduct of timber operations; (3) public safety personnel engaged in fire protection, law enforcement, or emergency medical services; or (4) such others as the JDSF State Forest Manager or his/her superiors may deem appropriate and who have written authorization to enter the Closed Area. All other members of the public, including, without limitation, any private security contractors not retained directly by CAL FIRE, are hereby excluded from the Closed Area and will be subject to misdemeanor prosecution pursuant to Section 4656.3 of the Public Resources Code.

For additional information, including a map of JDSF, please contact our office or the website listed below.

By: Brandon Gunn
Mendocino Unit Chief

###

For more information about the Jackson Demonstration State Forest visit:
<https://www.fire.ca.gov/programs/resource-management/resource-protection-improvement/demonstration-state-forests/jackson/>



2024 Soda Gulch THP Area Closure Map

■ Soda Gulch THP ▨ Soda Gulch Closure Area



Scale: 1:24,000