



DEMONSTRATION
STATE FORESTS 

Jackson Demonstration State Forest

Forest Management Plan Update
Restoration Ecology

Public Meetings

Fort Bragg and Ukiah



Land Acknowledgement

We would like to recognize that JDSF is the unceded traditional territory of the local Indigenous people past and present. Honoring of the land itself by stewardship has and continues to occur throughout the generations. This land acknowledgement compels us all to continue to learn how to be better stewards of the land.

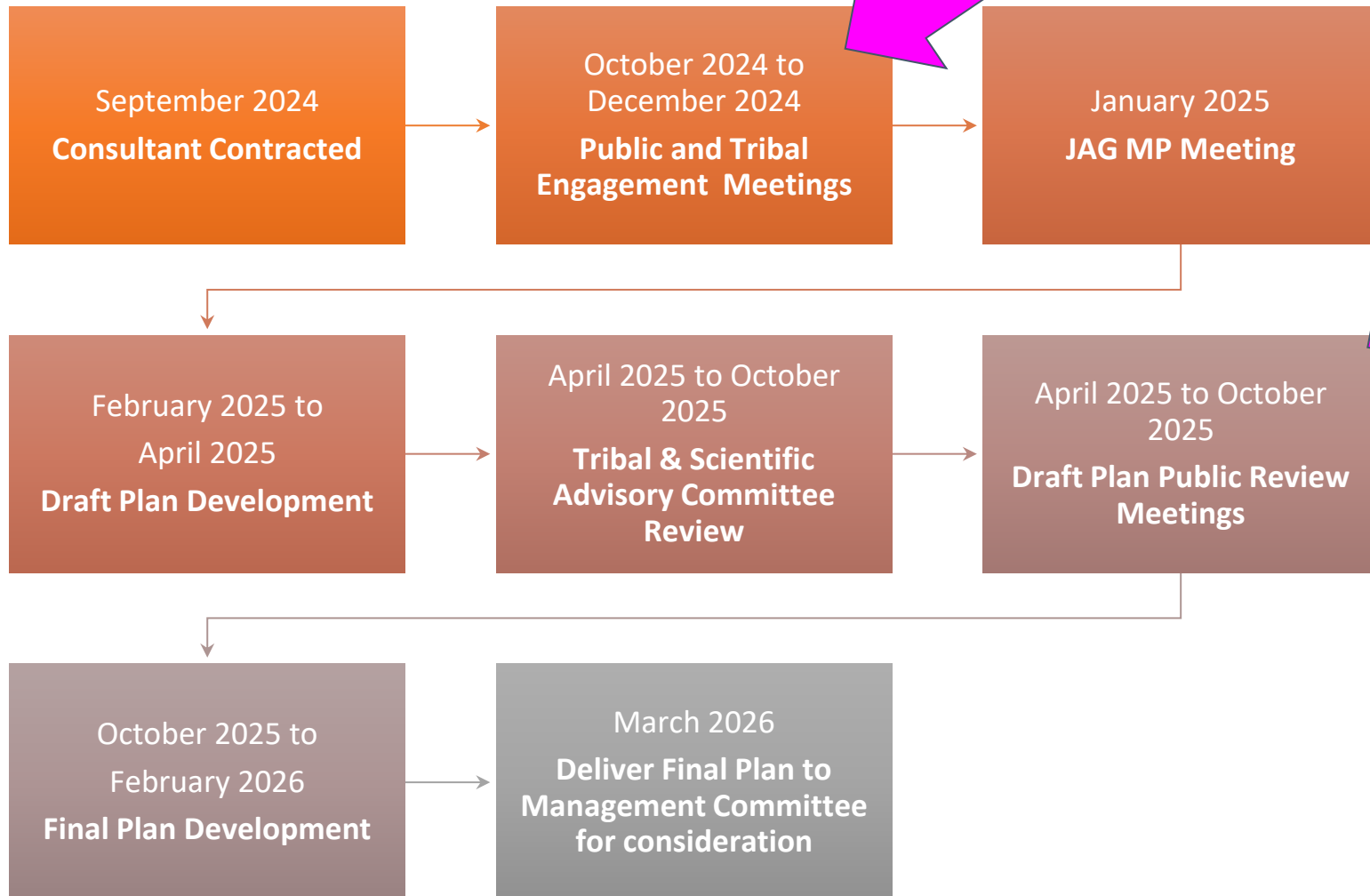
Community Agreements

- **Everyone has something to share.** Be brief and give others the opportunity to speak.
- **Be respectful.** Practice listening. Respect our differences. Speak from your own experience.

Stakeholder Interviews & Focus Groups

Talk to Miles or Jen if you
want to schedule one.

Management Plan Review Projected Timeline



Comment
Anytime

JDSF@fire.ca.gov

Registration Packet Materials

Jacksonstateforestplan.com

Scroll down to “Jackson State Forest Management Plan” and click

- The Agenda
- JDSF Map
- Land Use Allocation Definitions
- Forest Zoning Summary
- Newsletter articles: JDSF and Carbon, Multi-decade climate change study, research on burning and thinning, and wildlife in JDSF
- Management Plan Update Flow Chart

Meeting Materials

Jacksonstateforestplan.com

**Scroll down to “Jackson
State Forest Management
Plan” and click**

These public
meeting
presentations,
materials and other
documents will be
posted for review
and further
comment

Objectives

- Understand the purpose of a public “Demonstration” Forest
- Understand the management zones and the elements and examples of ecological management at JDSF
- Provide input on ecology management objectives and priorities at JDSF for the management plan update

Restoration Ecology vs. Restoration Economy

**Estelle Clifton,
Forester & Botanist
Clifton Env**



Special Topic Meetings - held and upcoming



Topic: Introductory Meeting

- Monday, Oct. 21, 5-7 PM: Fort Bragg - Town Hall
- Tuesday, Oct. 22, 5-7 PM: Ukiah - Saturday Afternoon Clubhouse

Topic: Tribal Co-Management

- Tuesday, Oct. 29, 5-7 PM: Fort Bragg - Town Hall
- Wednesday, Oct. 30, 6-8 PM: Ukiah - Senior Center

Topic: Restoration Ecology

- Monday, Nov. 18, 6-8 PM: Ukiah - Saturday Afternoon Clubhouse
- Thursday, Nov. 21, 5-7 PM: Fort Bragg - Town Hall

Topic: Restoration Economy

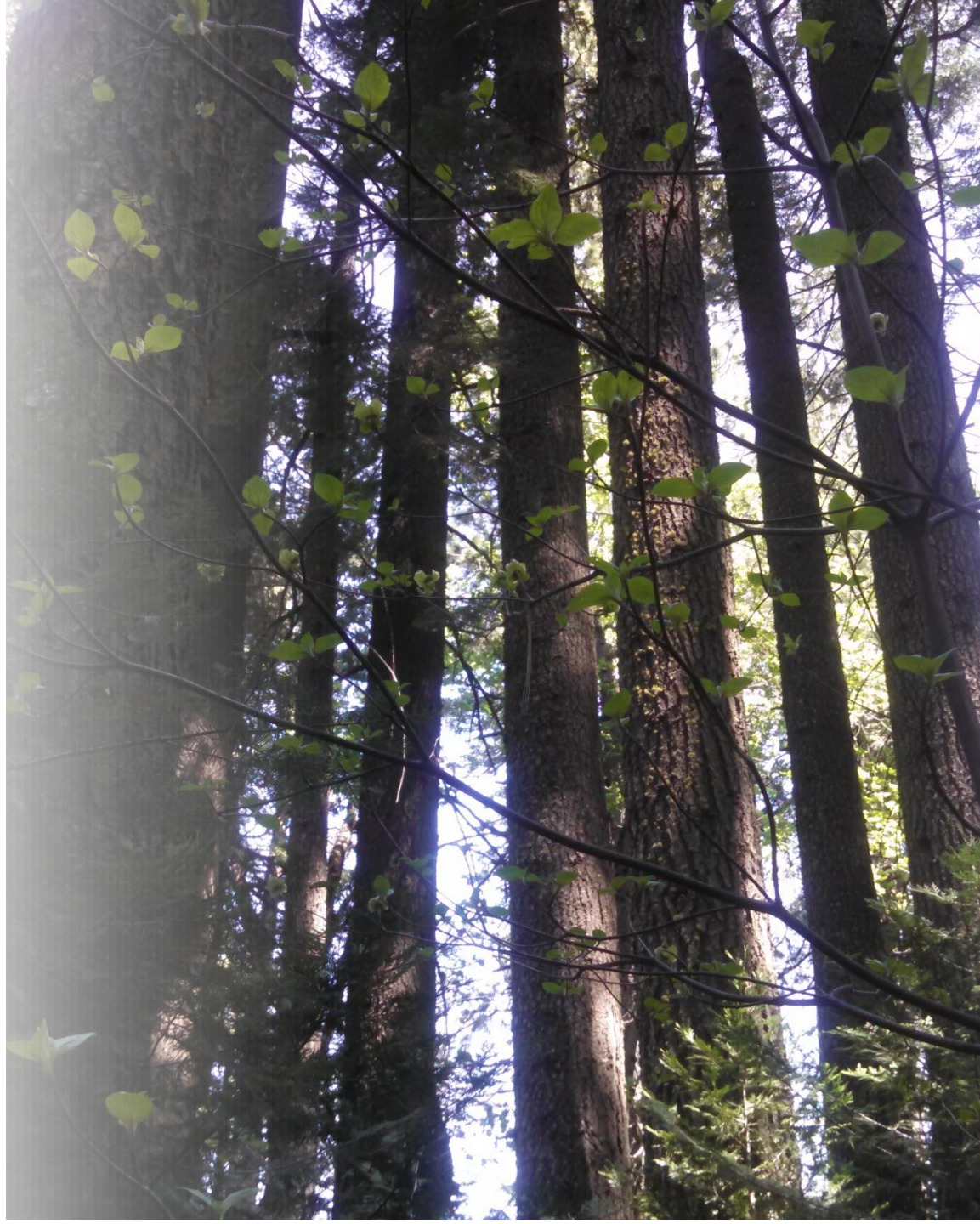
- Thursday, Dec. 12: 6-8 PM: Ukiah - Senior Center
 - Friday, Dec. 13, 5-7 PM: Fort Bragg - Veterans Hall
- 

Restoration Ecology vs. Restoration Economy

**Restoration Ecology/Economy
overlap**

Restoration Ecology includes:

- **Research**
- **Botanical surveys**
- **Fish projects**
- **Wildlife surveys**
- **Invasive species monitoring**
- **Fire**



Agenda

- What is the “Demonstration” part of Jackson Demonstration State Forest?
- Elements and Examples of Ecological Management at JDSF
- Break
- Public Input using Land Use Allocation Management Zones Objectives
- Prioritization of Management Objectives and Activities
- Closing and Next Steps

Bike Rack

- Items not on Today's Agenda
- Items on agenda that you want to comment on, but didn't have time

Notecards

- If you have questions or comments during the presentation, please write these down for reference during the public input session
- Or you may write comments and leave with us at the end

Demonstration State Forests

Kevin Conway

Demonstration State Forests
Program Manager

- State Land Stewardship
- Overview of Demonstration State Forest Program
- Role of Demonstration State Forest Program
- Example Management Activities

State Land Stewardship

- Each agency has a unique role.
- Collectively, this group represents the state's interest in forests and natural lands.
- The CAL FIRE Demonstration State Forests represent about 2% of the state's land holdings.
- Fill a unique role in demonstrating and understanding principles of sustainable forestry for social, ecological, and economic values.

Table 1: State-owned land management area by agency.

State Agency	Approximate Owned or Administered Acreage
CAL FIRE	85,135
California Department of Fish and Wildlife	1,197,741
California State Lands Commission*	458,943
California State Parks	1,596,816
California Tahoe Conservancy	6,500
Caltrans**	350,000
Santa Monica Mountains Conservancy	8,316
University of California Natural Reserve System***	130,638
TOTAL COMBINED ACREAGE	3,834,089



Demonstration State Forests Multiple Sustainability Objectives

- Silvicultural practices compatible with:
 - Recreation
 - Soil protection
 - Water quality and quantity
 - Wildlife and fisheries values
 - Carbon sequestration
 - Aesthetic enjoyment
- These constraints are recognized in the Option A to constrain maximum sustained productivity of forest products.
- Jackson further recognizes the importance of non-timber values in designating land use allocations.

Demonstration State Forests

Demonstration of Multi-Use Management

- Conduct innovative demonstrations, experiments, and education in forest management.
- Projects within regulatory framework private landowners are subject to.
- Utilize and support same workforce and infrastructure available to private landowners.
- Demonstrate balance of ecological goals to private landowners within commercial activities.
 - State also uses grant programs and regulatory authority to protect public interest in forest resources.



Land Allocation Zones in JDSF

- Implementation of all land allocations allows the Forest to maintain a diverse “library” of different stand structures and conditions.
- Land allocations have separate goals, considerations, and activities.
- Land allocations were developed through community input, researchers, JAG, CAL FIRE, and Board of Forestry.

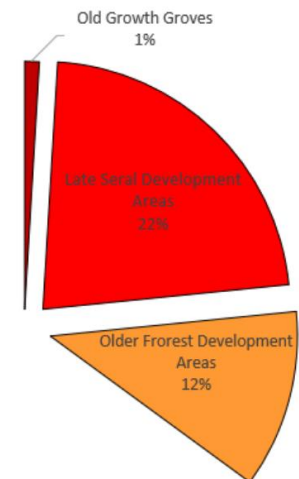




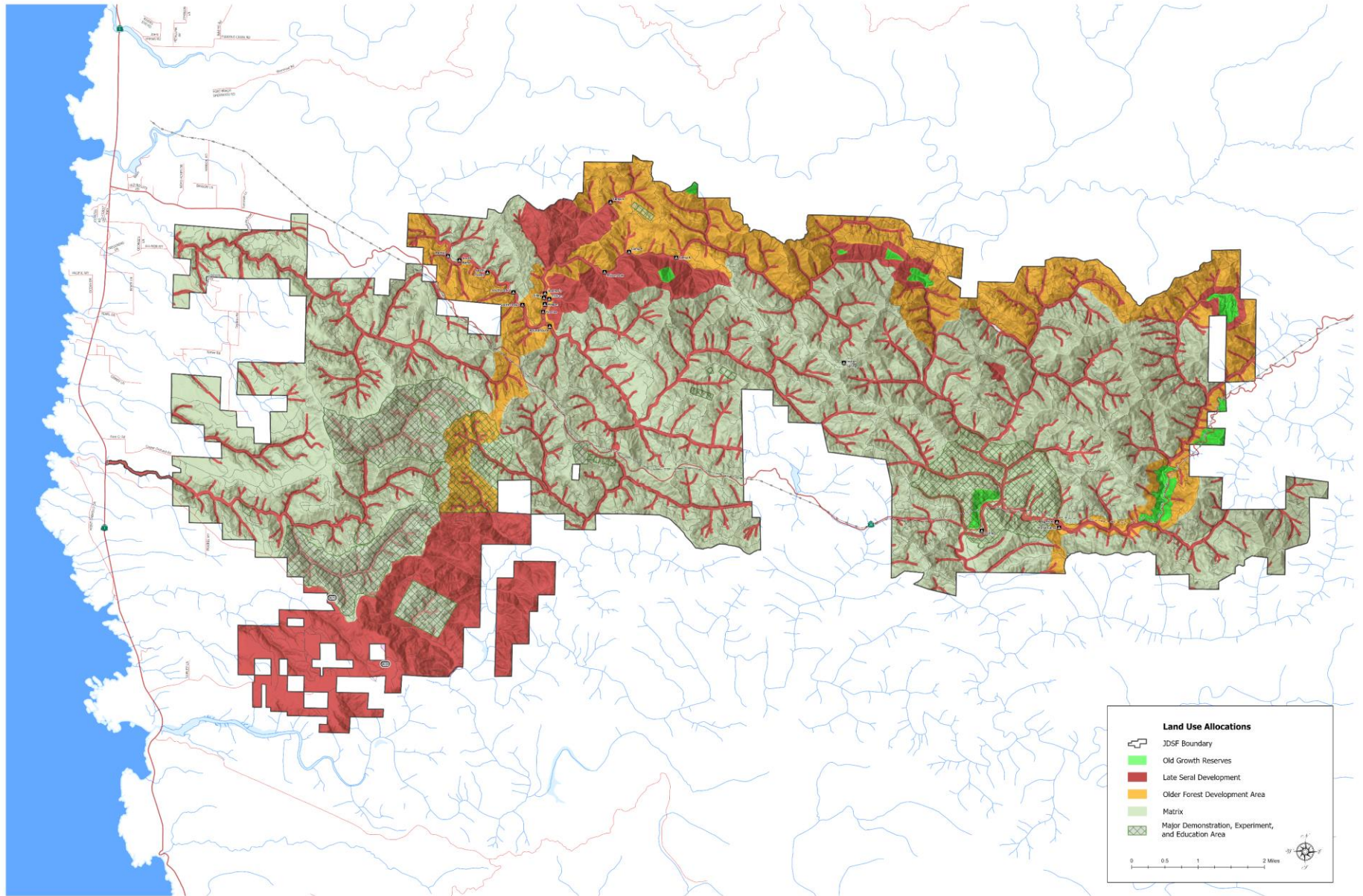
Land Allocation Zones

- Old Growth Reserves
- Late Seral Development
- Older Forest Structure
- Matrix and Research

35% or 15,801
acres are Old
Growth, Late
Seral
Development or
Older Forest
Development



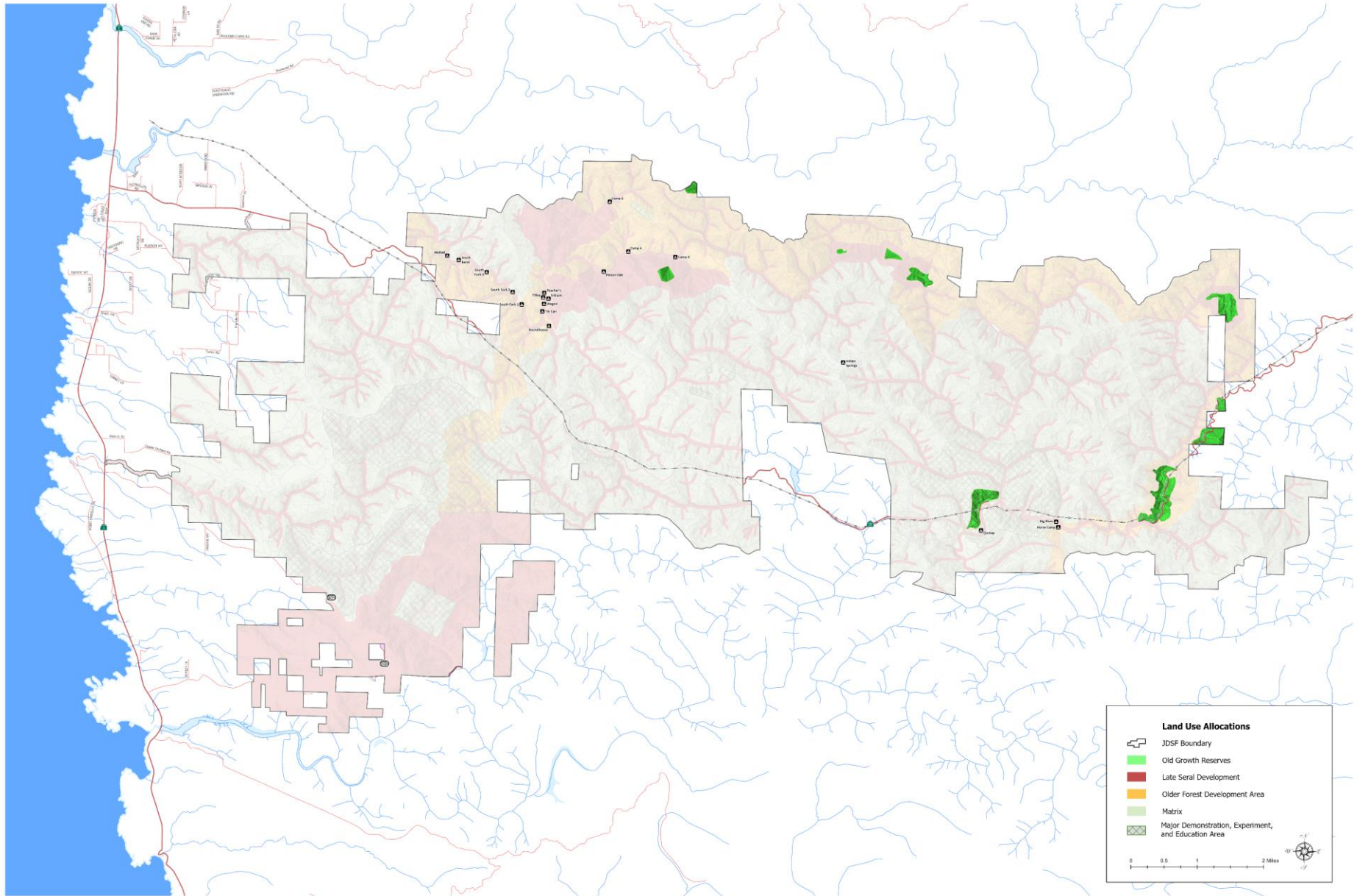
JDSF Land Allocations



Old Growth Reserves

Management Goals

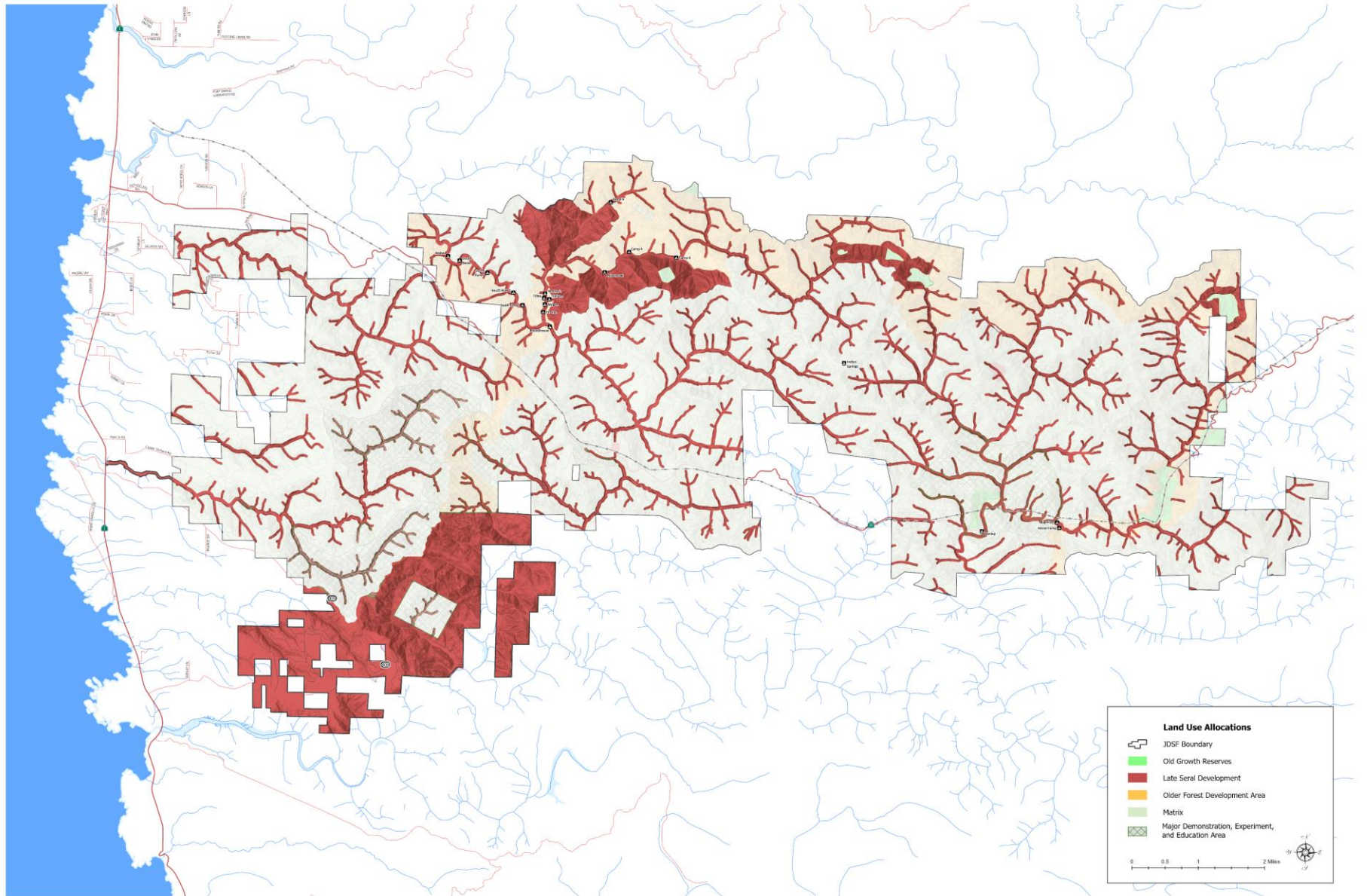
Maintain forest health and resiliency



Late Seral Development

Management Goals

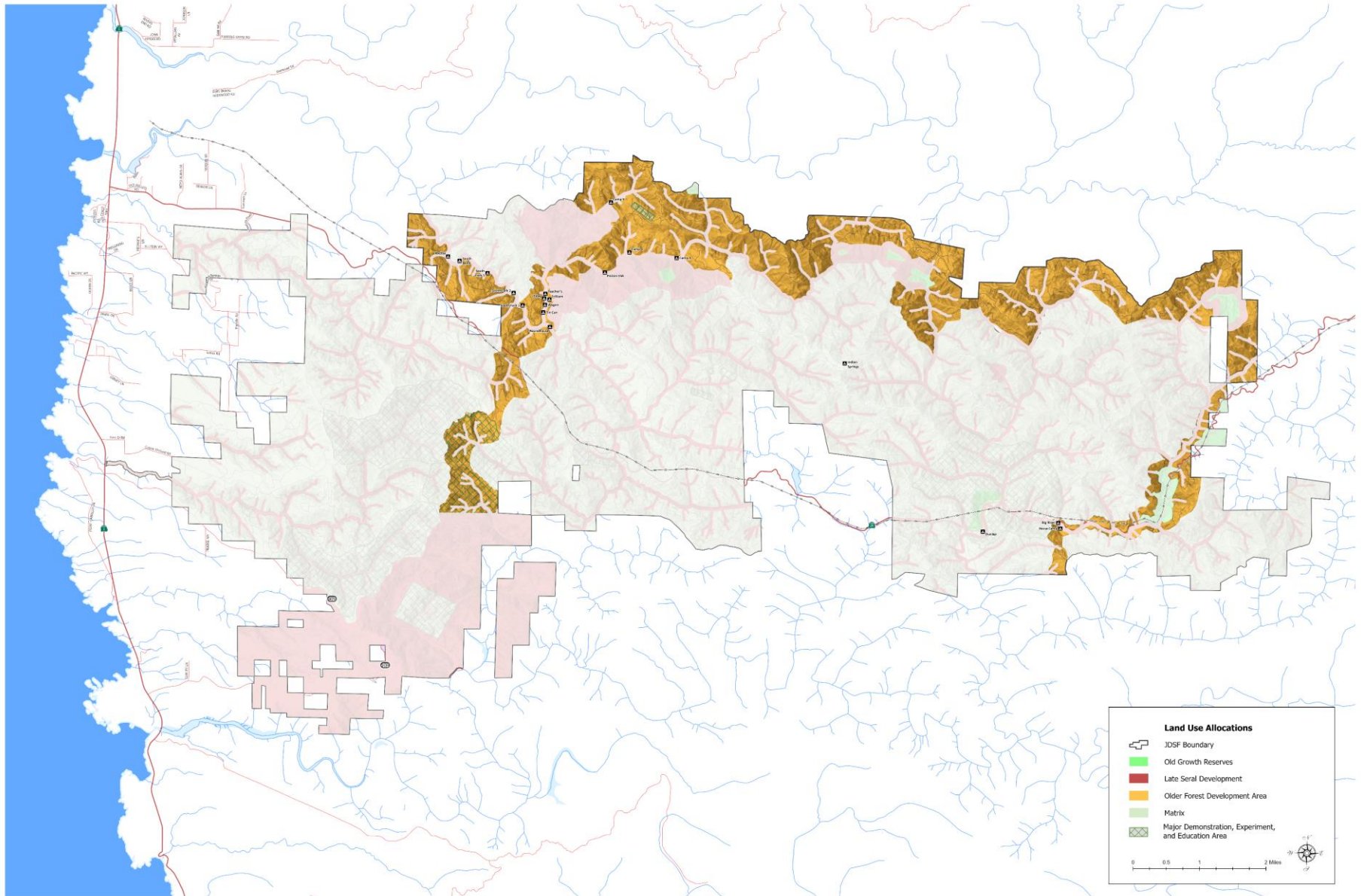
Accelerate the development of larger trees and older forest structure.



Older Forest Development

Management Goals

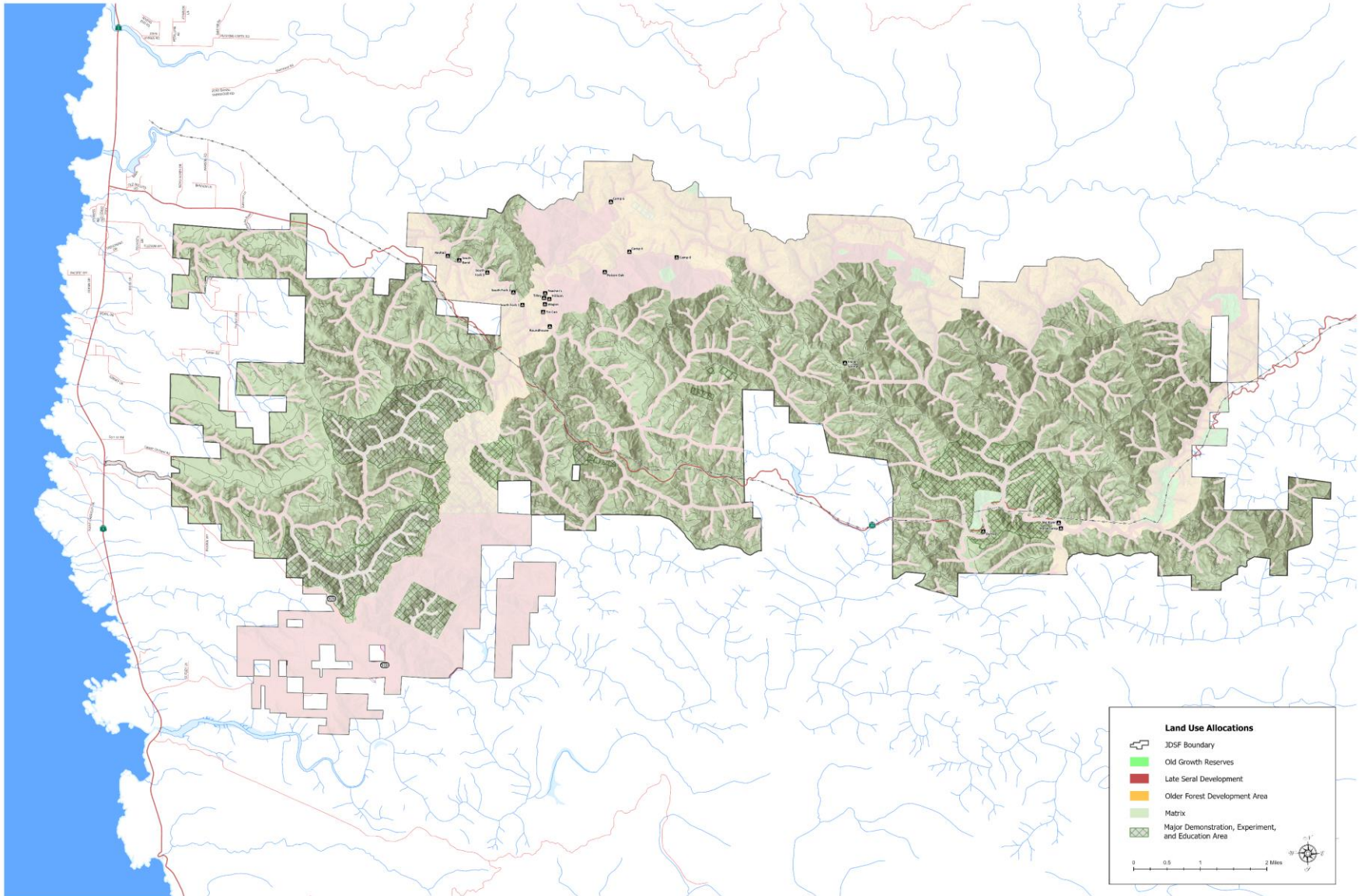
Manage forest with extended harvest rotations and higher levels of forest habitat complexity



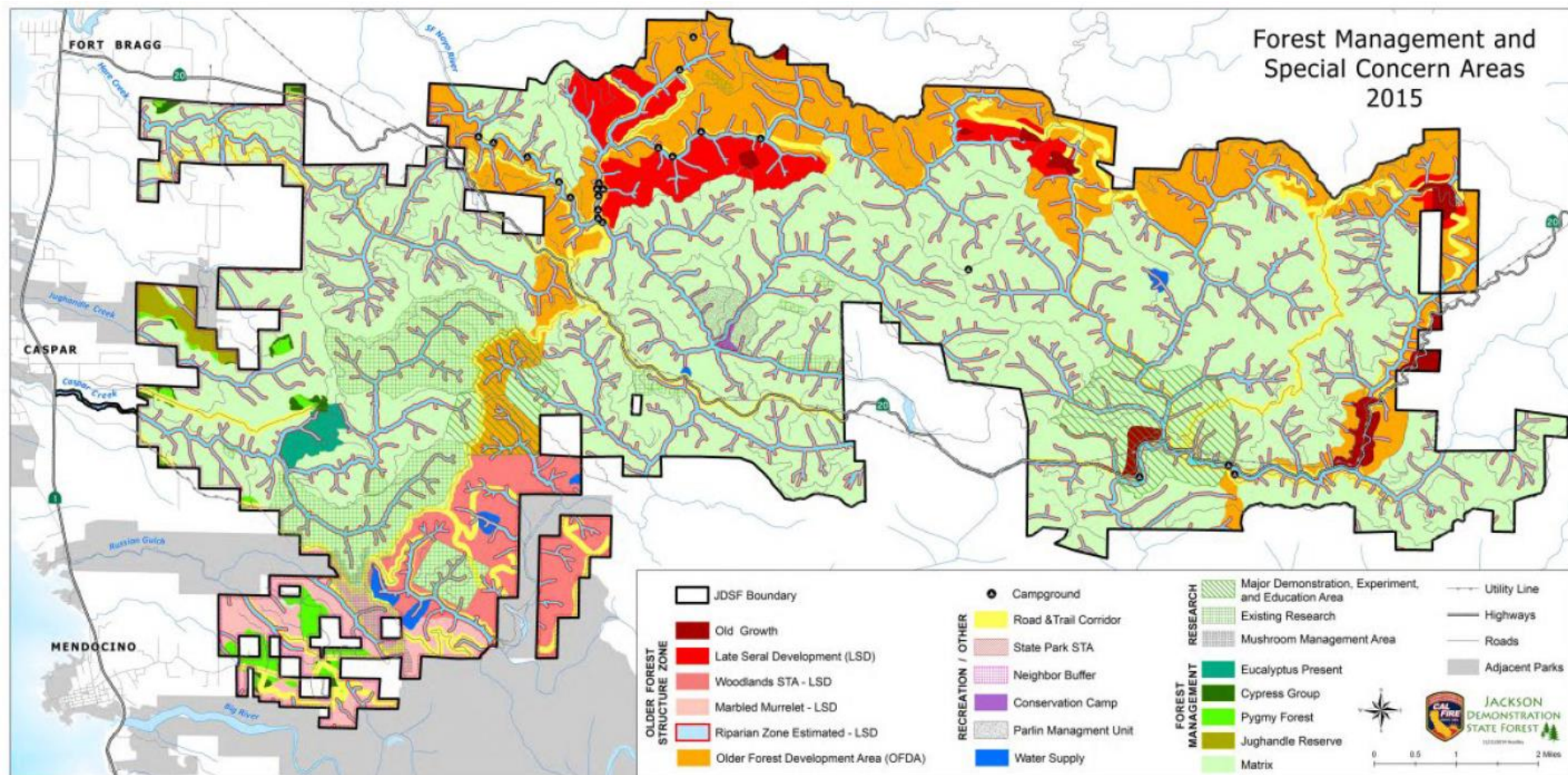
Matrix and Research

Management Goals

Manage forest with a variety of silvicultural methods to create a heterogeneous landscape and support forest research.



Forest Management and Special Concern Areas 2015





DEMONSTRATION
STATE FORESTS 

Jackson Demonstration State Forest

From Hair Brained to Hare Creek
How Ecology Research Comes to JDSF

Public Meetings

Fort Bragg and Ukiah

**Robert Douglas,
State Forest Biologist,
CAL FIRE**

**Kyle Farmer,
JDSF Historian and Fire Advisor
Clifton Env**



Continuous Forest Inventory (CFI) Plots



Jackson Demonstration State Forest
California Department of Forestry and Fire Protection-Mendocino Unit
Continuous Forest Inventory (CFI)



- CFI Plot Centers
- Roads
- Highway
- County
- Primary Forest Road
- JDSF Boundary

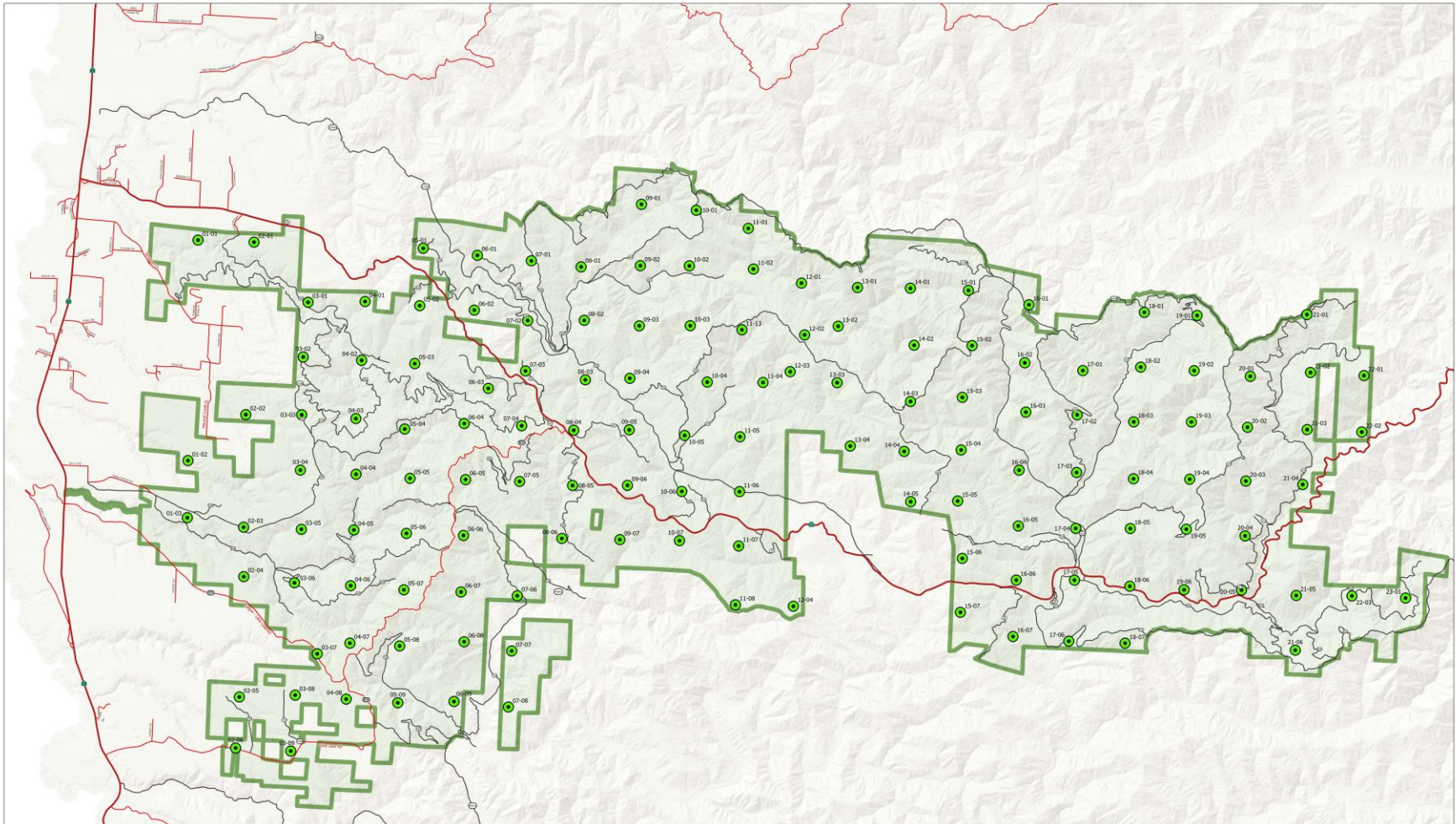
All visitors are responsible for knowing
State Forest regulations and fees. Contact
JDSF Headquarters for information.
953 N Main St
Fort Bragg, CA
(707)764-5634

Projection: Teale Albers
Datum: NAD 83

1:26,000
Revision Date: 11/14/2024



0 0.75 1.5 3 Miles



Stream Habitat Restoration - LWD Projects



Jackson Demonstration State Forest
California Department of Forestry and Fire Protection-Mendocino Unit

Stream Restoration Projects



Stream Restoration Projects
Large Woody Debris
Class
Planned Areas

Status	Sum of miles
Installed	23
Planned	21.9

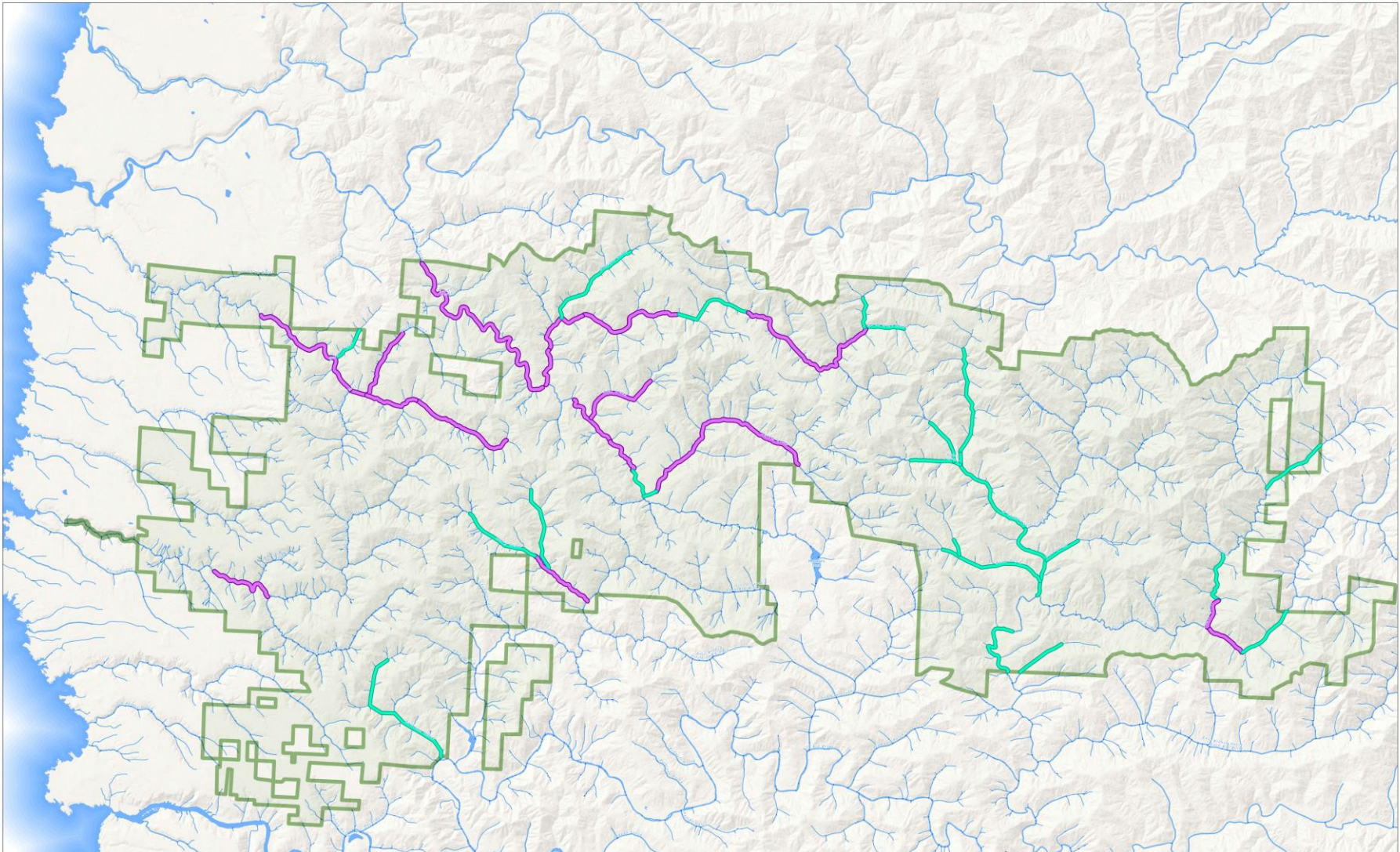
All visitors are responsible for knowing
State Forest regulations and fees. Contact
JOSF Headquarters for information
802 N Main St
Fort Bragg, CA
(707)964-5674

Projection: Teale Albers
Datum: NAD 83

1:26,000
Revision Date: 11/14/2024



0 0.75 1.5 3 Miles



Road Decommissioning



Jackson Demonstration State Forest
California Department of Forestry and Fire Protection-Mendocino Unit

Road Decommissioning Projects



Roads
— Highway
— County
— Secondary
— Spur
— Primary Forest Road

— Decommissioned Roads
— JDSF Boundary

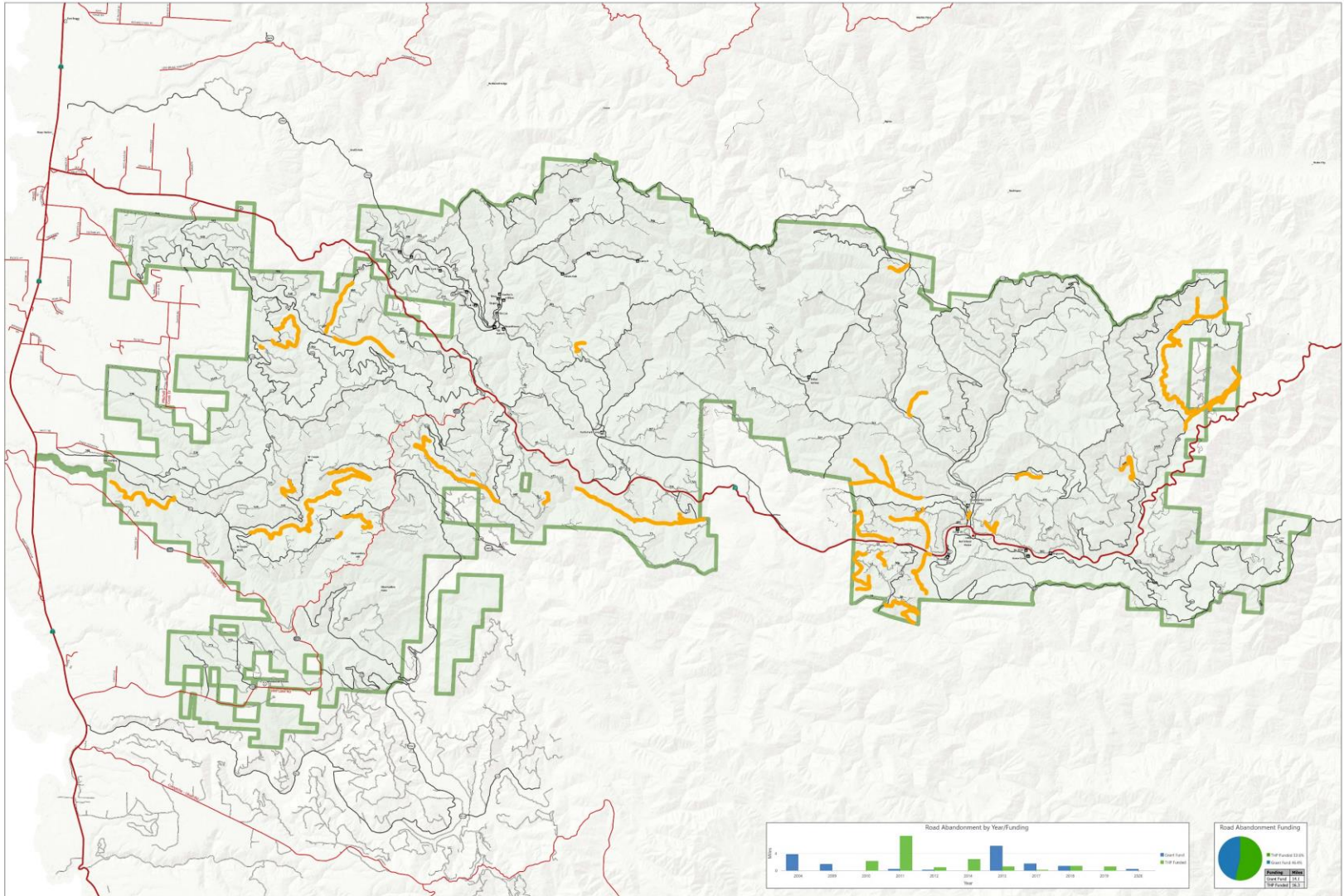
All visitors are responsible for knowing
State Forest regulations and fees. Contact:
JDSF Headquarters for information
8022 N Main St
Fort Bragg, CA
(707) 964-3434

Projection: Teale Albers
Datum: NAD 83

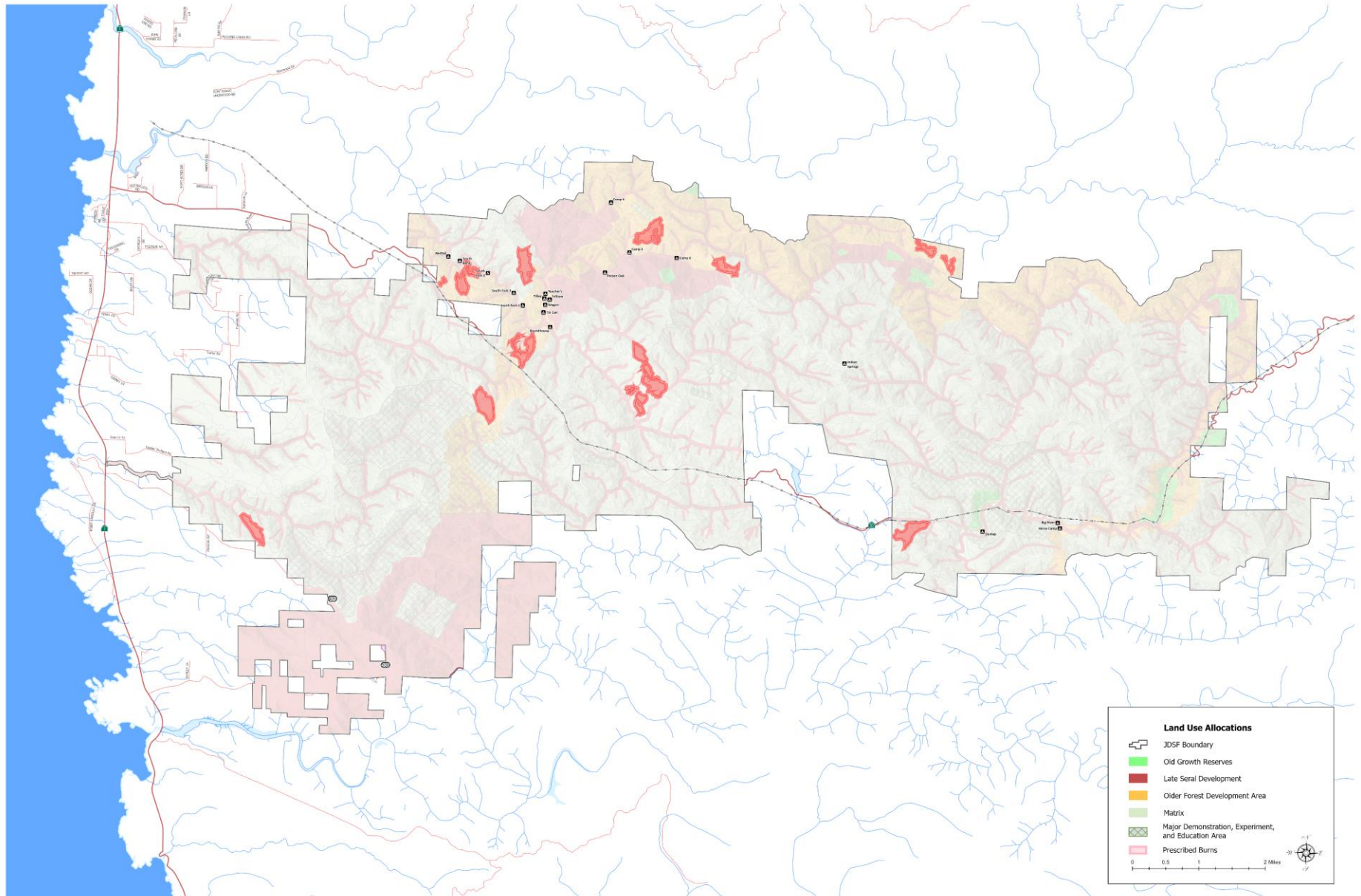
1:26,000
Revision Date: 11/14/2024



0 0.75 1.5 3 Miles



Prescribed Fire



Protocol Botanical Surveys



Jackson Demonstration State Forest

California Department of Forestry and Fire Protection-Mendocino Unit

Botanical Surveys



Botanical Survey Areas (last 10 years)
Roads
Highway
County
Primary Forest Road

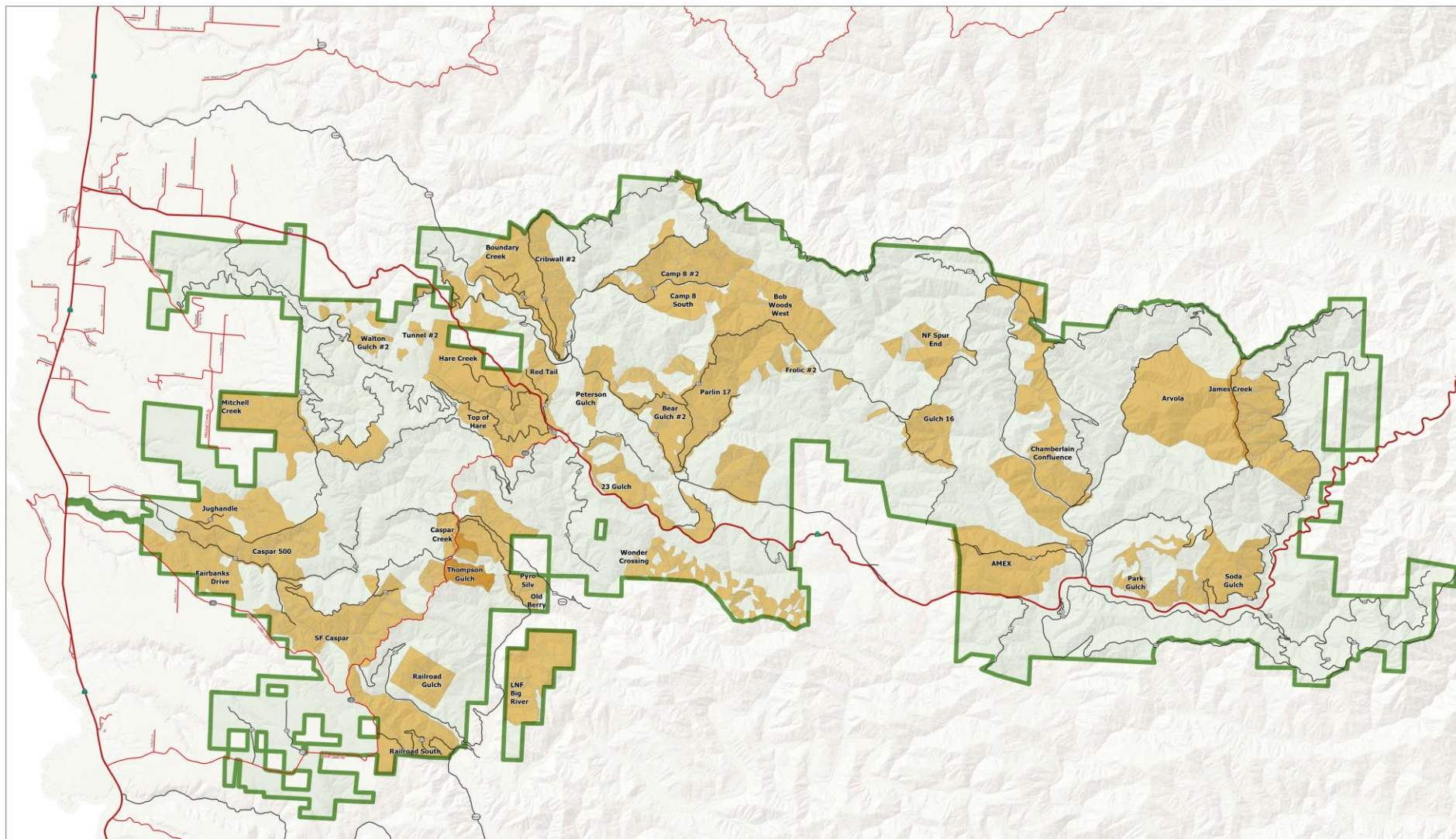
All visitors are responsible for knowing
State Forest regulations and fees. Contact
JDFP Headquarters for information
802 N Main St
Fort Bragg, CA
(707)964-5674

Projection: Teale Albers
Datum: NAD 83

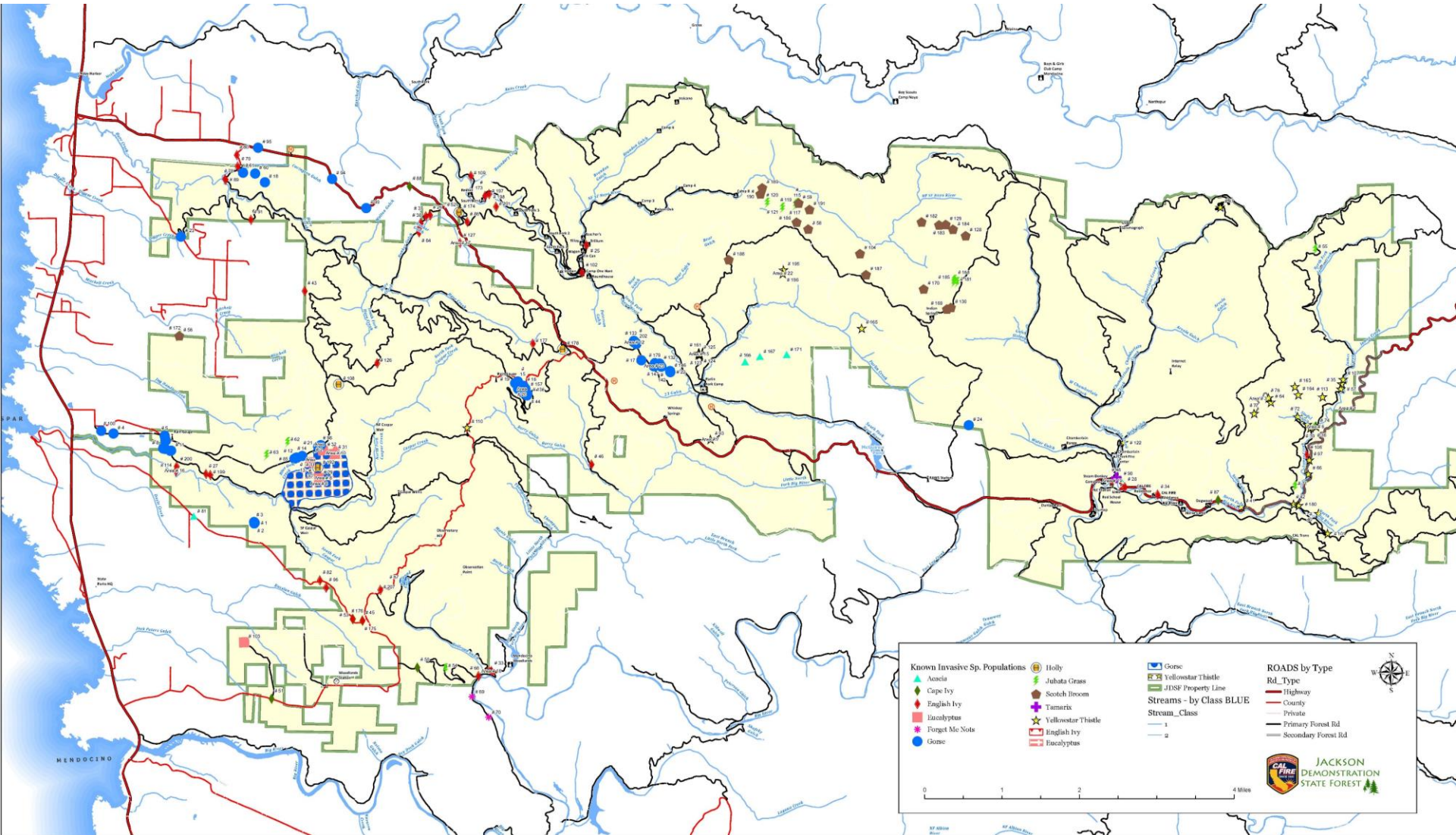
1:25,000
Revision Date: 11/14/2024



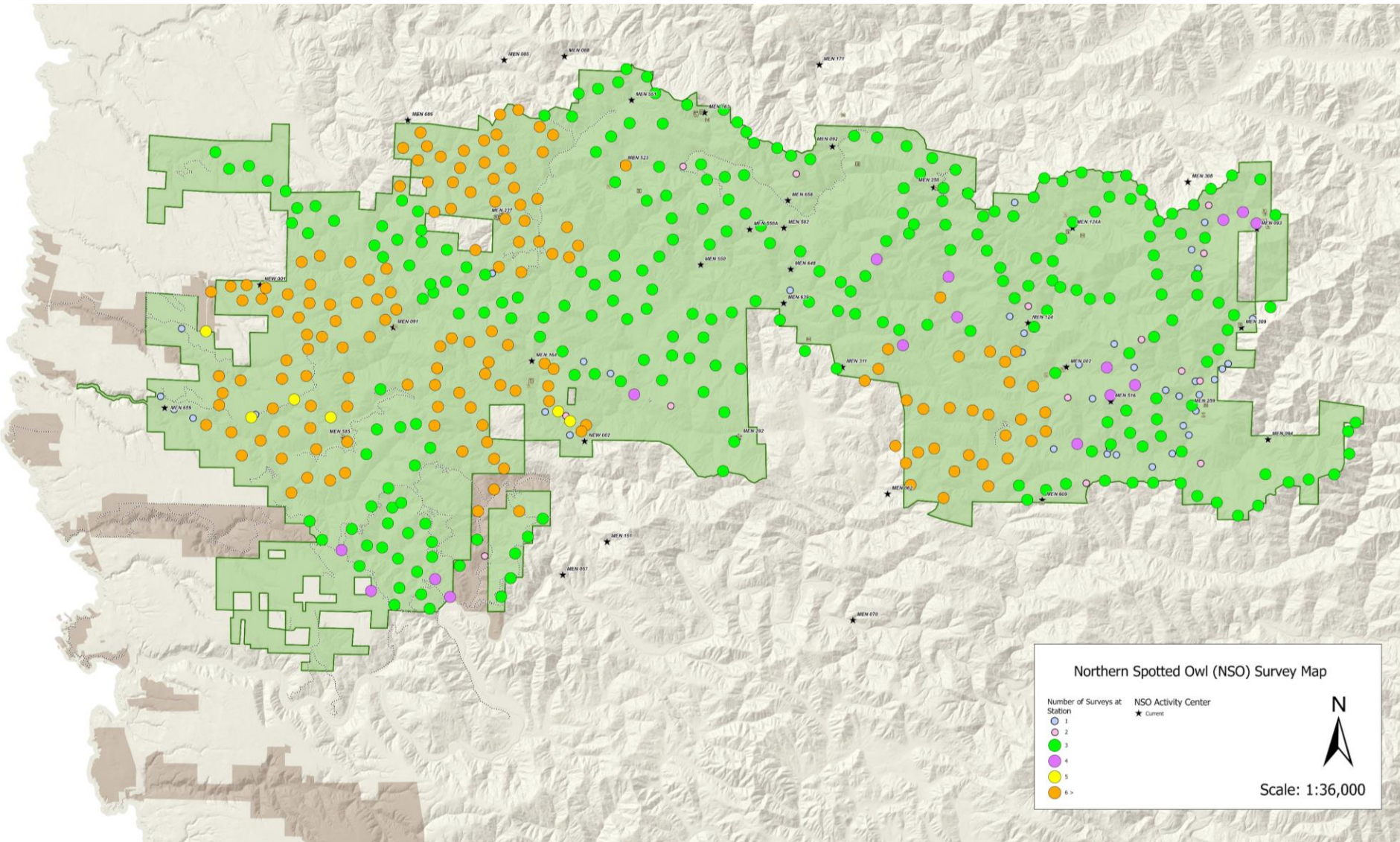
0 0.75 1.5 3 Miles



Invasive Species Management



Wildlife Surveys for Northern Spotted Owl (NSO)



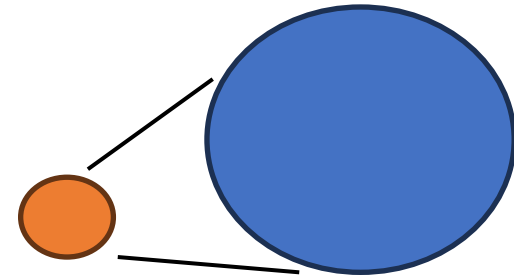
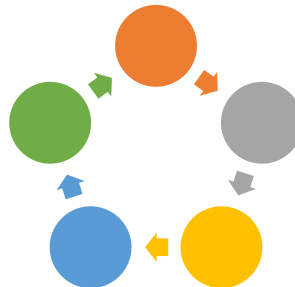
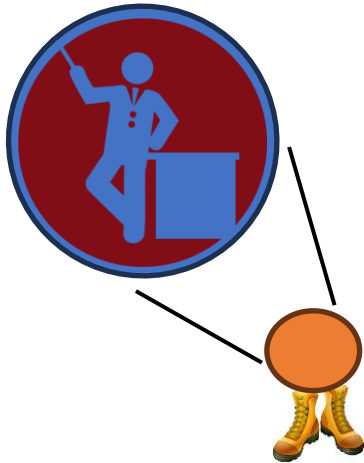
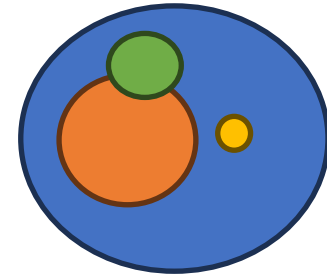
University of Wisconsin Barred Owl Studies

UW researchers are removing barred owls across JDSF and surrounding landscapes to answer questions:

1. How much effort is needed to keep barred owls at low numbers?
2. Where and how frequently do barred owls return to removal areas? Does it vary across landownership?
3. How many spotted owls return to former territories after removal?
4. What do barred owls eat and how frequently in west coast forests?
5. What effects are barred owls having on other forest owl species?



Danny Hofstadter



Nested

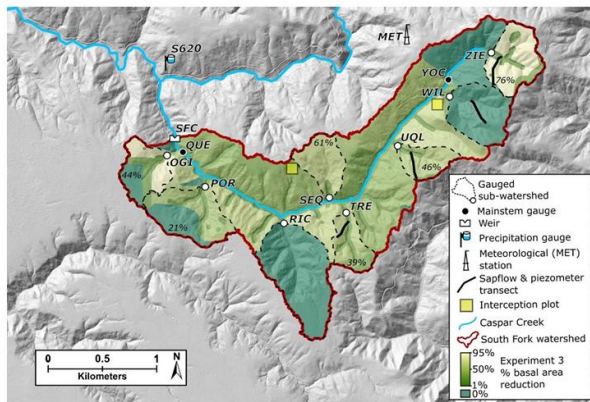
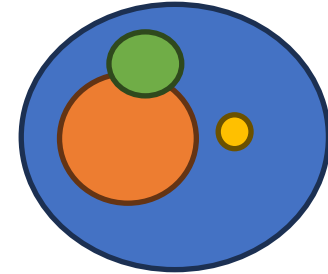


Figure 4: Basal area reduction in the South Fork Caspar Creek as part of the third experiment (Dymond et al., In Review).

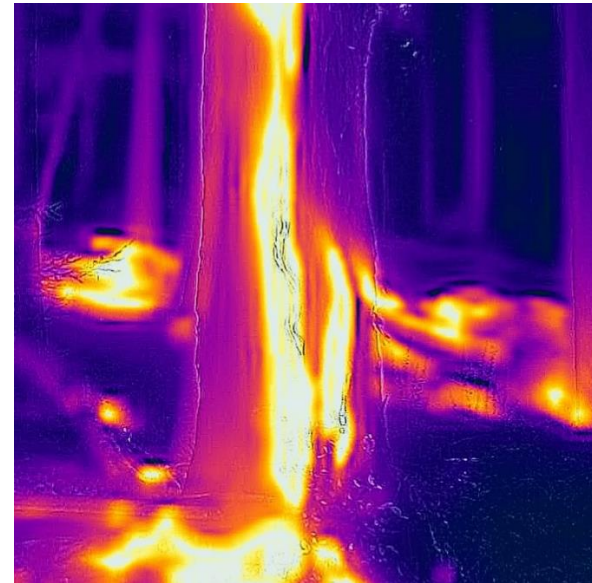
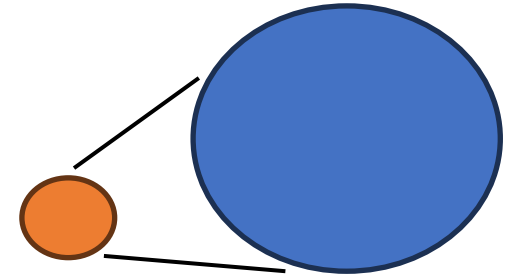


Figure 9: Photograph of leaf wetness sensor (LWS) secured to a bracket and mounted at a height of 6.1 meters (20 feet) in a *S. sempervirens* tree at the harvested ridge study site.

Fog Presence and Ecosystem Responses in a Managed Coast Redwood Forest

Julia Petreshen

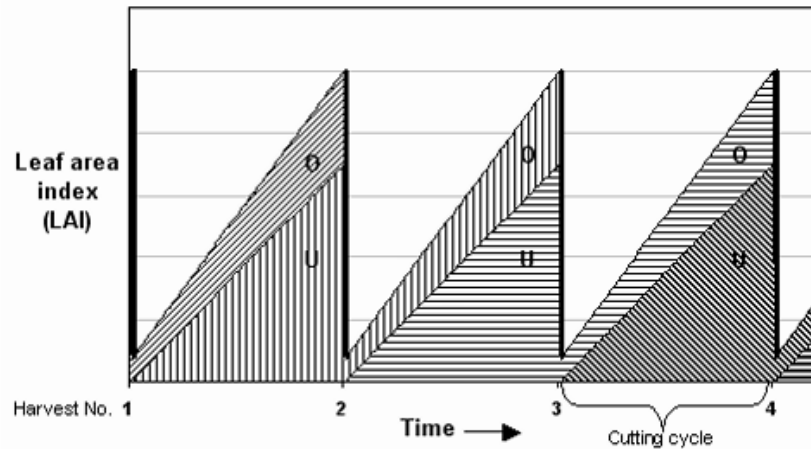
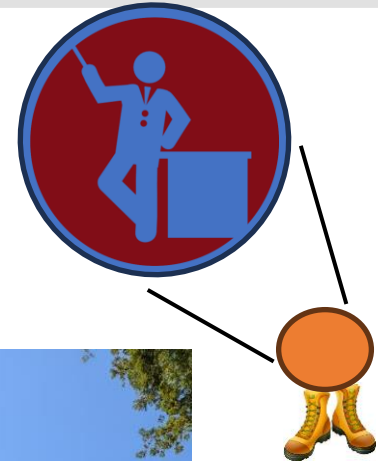
Demo Leading to Research



Parlin Burns + UCCE plots lead to questions to be explored in JDSF Pyrosilviculture THP

Mike Jones (UCCE), Rob York (UCB), Grad Student

Formal Demonstration



MASAM (Multiaged Stocking Assessment Model)

O'Hara, K.L.; Valappil, N.I. 1999. Masam—a flexible stand diversity management model for meeting diverse structural objectives in multi-aged stands. *Forest Ecology and Management* 118: 57-71.

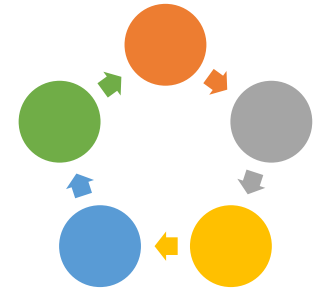
Modeling Coast Redwood Variable Retention Management Regimes¹

John-Pascal Berrill² and Kevin O'Hara³



Board of Forestry

Effectiveness Monitoring Committee

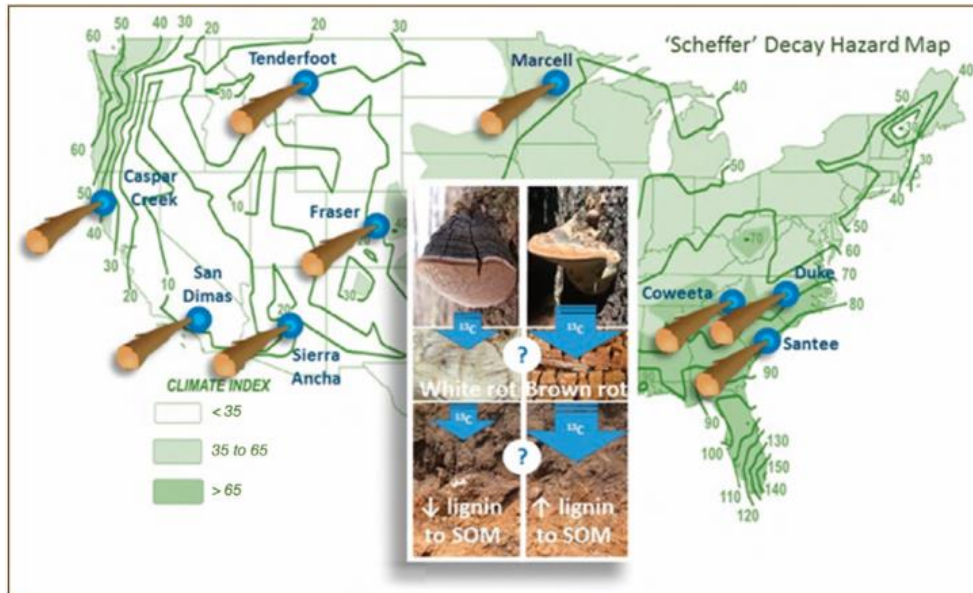


Decay Rates and Fire Behavior of Woody Materials in Coastal Redwoods

Tori Norville



Fed - lead



[Wood Decomposition and its Role in the Forest Carbon Cycle: The FACE Wood Decomposition Experiment](#)



Regional Sampler



Influence of microclimate and forest
management on bat species faced
with global change
Chelsea Andreozzi



JDSF lead



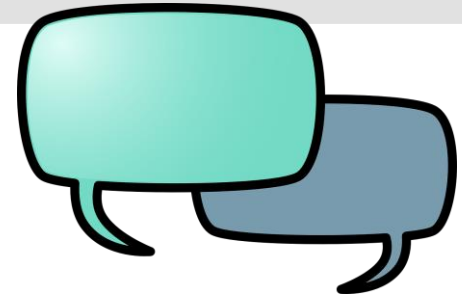
JACKSON
DEMONSTRATION
STATE FOREST



Stream-associated Amphibian Detection
And Fine-scale Distribution Inferences
from Environmental DNA

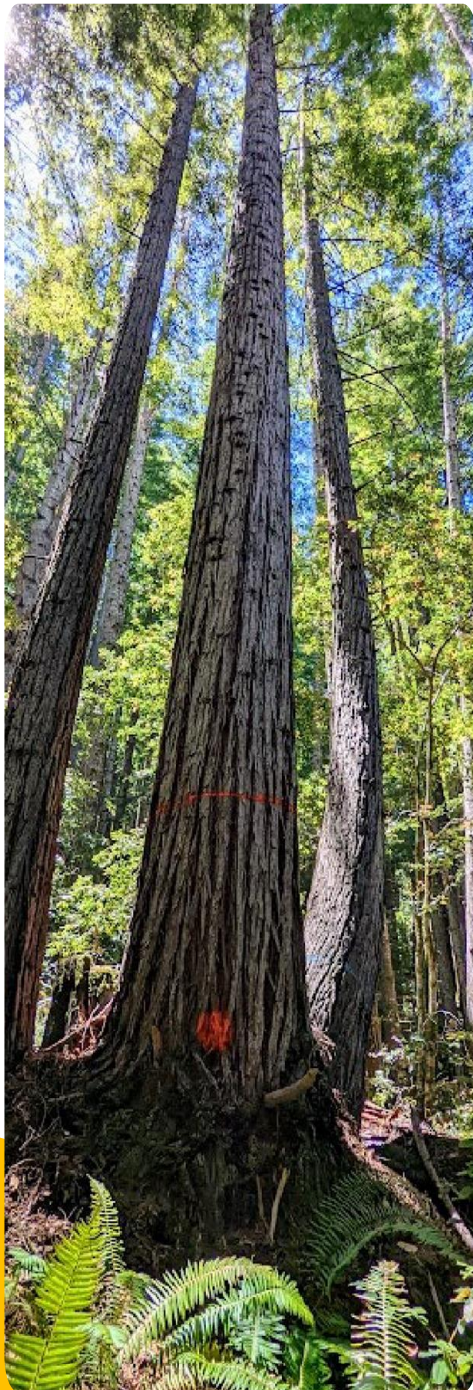
Kelsey Marshall

Walk and Talk



Assessing the biogeochemical response of forest soil to prescribed fire and mastication treatments in the rare and threatened Pygmy Forest Ecosystems of California





Community Input

- Two groups: 2 Management Zones in each group
- 20 minutes in each group
- Can rotate or stay in the same group
- After both rotations, you will have time to review what others have written and share your priority management objectives/activities for next 10 years at JDSF
- Clarifying questions on these can be asked at groups sessions to CAL FIRE/ EC team

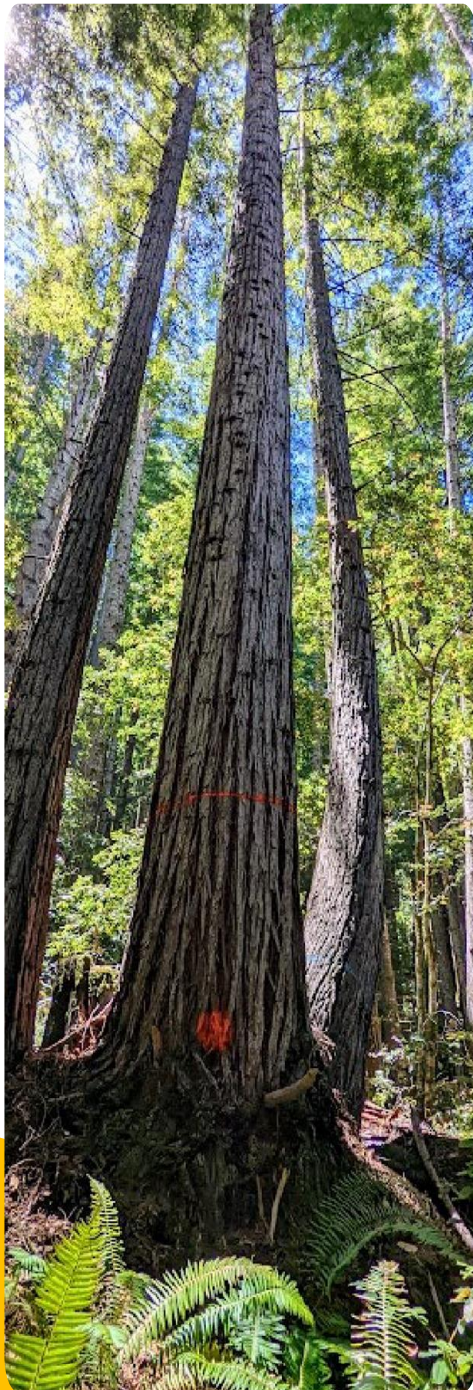
Remember community agreements

Facilitated Group Questions:

- 1. What is important to you?**
- 2. What management activities would you like to see in this zone?**

A photograph of a dense forest with tall, slender trees and a thick undergrowth of ferns. The scene is captured in a slightly desaturated, vintage style. The text "5 MIN BREAK" is overlaid in the center in a white, sans-serif font.

5 MIN BREAK



Community Input

- Two groups: 2 Management Zones in each group
- 20 minutes in each group
- Can rotate or stay in the same group
- After both rotations, you will have time to review what others have written and share your priority management objectives/activities for next 10 years at JDSF
- Clarifying questions on these can be asked at groups sessions to CAL FIRE/ EC team

Remember community agreements

Facilitated Group Questions:

- 1. What is important to you?**
- 2. What management activities would you like to see in this zone?**

Prioritization

- Review all comments
- Prioritize for next 10 years
- One dot per activity or comment
- 10 dots of each:
 - **Green** - high priority
 - **Yellow**- medium priority
 - **Red**- Low or not a priority

Update Process and Next Steps for Community Input

Topic: Restoration Ecology

- Monday, Nov. 18, 6-8 PM: Ukiah - Saturday Afternoon Clubhouse
- ~~Thursday, Nov. 21, 5-7 PM: Fort Bragg - Town Hall~~

Topic: Restoration Economy

- Thursday, Dec. 12: 6-8 PM: Ukiah - Senior Center
- Friday, Dec. 13, 5-7 PM: Fort Bragg - Veterans Hall

Pre-register:

<https://jacksonstateforestplan.com/register>

Management Plan Review Projected Timeline



A photograph of a dense forest with tall, slender trees and a thick undergrowth of ferns. The scene is captured in a slightly desaturated, vintage style. The text "THANK YOU" is overlaid in the center in a white, sans-serif font.

THANK YOU