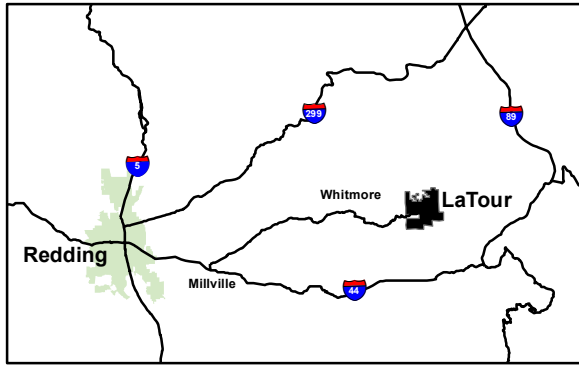




# LaTour Demonstration State Forest

Shasta-Trinity Unit



## A Few Reminders

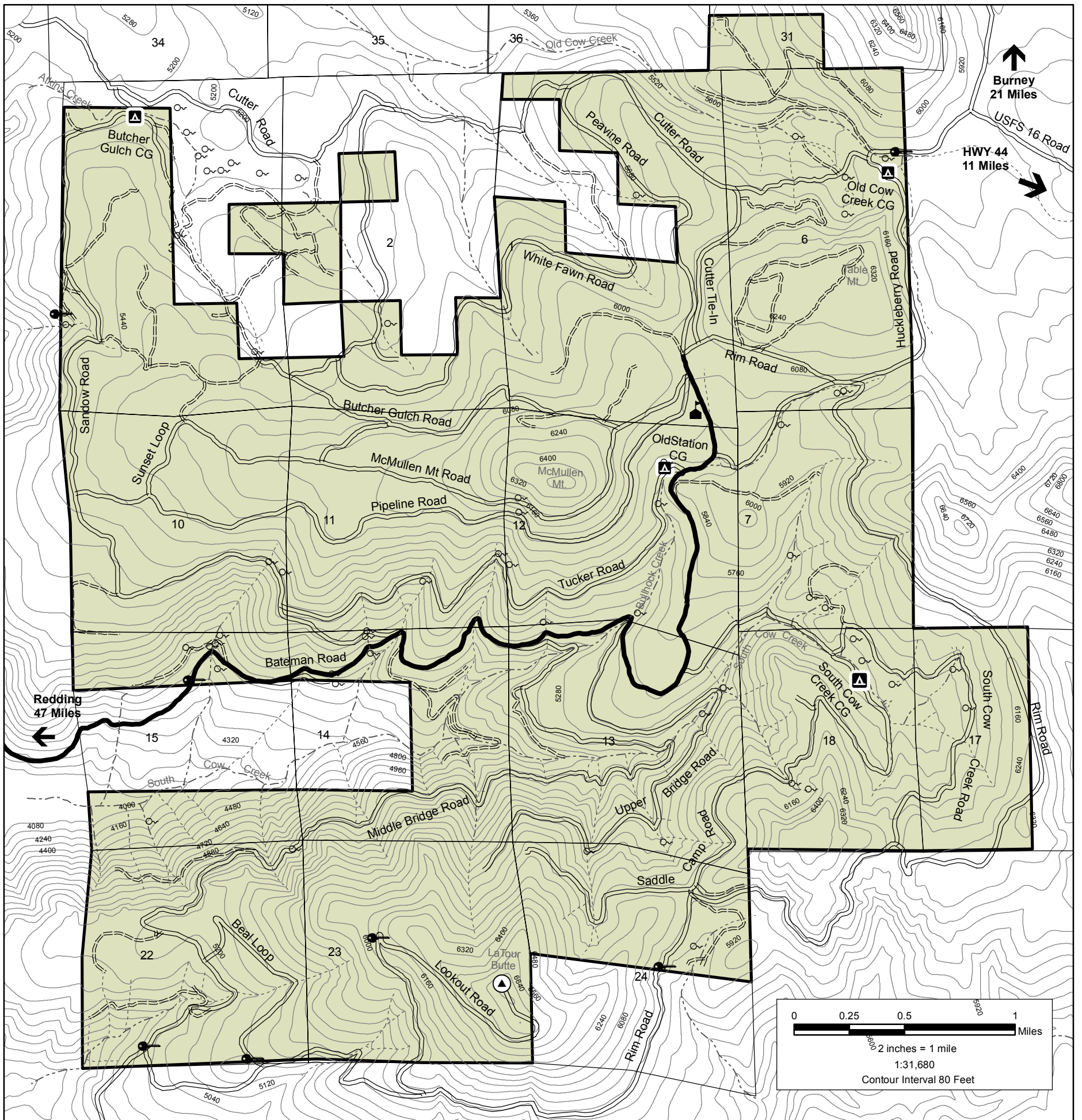
To make your stay at LaTour Demonstration State Forest enjoyable here are a few reminders:

1. Campgrounds are designed for single family use. Group camping, in excess of ten people in a single site, is not allowed. Groups need to have a minimum of one campsite for every ten people.
2. Campgrounds have a two week limit per site.
3. Maintain a clean camp. Use trashcans. If cans are full, take your garbage with you.
4. Permits are required for firewood and Christmas tree cutting and can be purchased at the CAL Fire Shasta-Trinity Unit Headquarters in Redding.
5. Use motor vehicles only on the existing roadways. Drive cautiously.
6. Hunting is not allowed near the Forest Headquarters during hunting season. Observe posted closures.
7. Discharging of firearms in or around campgrounds or the Forest Headquarters is prohibited.
8. Be careful with cigarettes, matches and fire.
9. Enjoy this timberland but do not deface the trees, litter the land or pollute the streams.

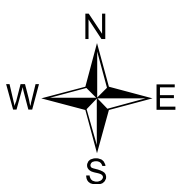
## LaTour Facts

Established	1946
Total Acreage	9,033
Timber Acreage	7,530
Elevation	3,800' to 6,740'
Annual precipitation	46" (mainly snow)
Temperature	0 F (Winter)
	90+ F (Summer)
Average stand volume	21,233 board feet per acre over 12" dbh
Average growth per acre	472 board feet per year

Campground	Spaces	Water	Toilet	Picnic Tables
South Cow Creek	4	No	Yes	4
Old Cow Creek	3	No	Yes	3
Butcher Gulch	2	No	Yes	2
Old Station	4	Yes	Yes	2



By: N. Ozard  
03/27/2017



- Primary road
- Secondary dirt road
- Bateman Road
- Class 1 watercourse
- Class 2 watercourse
- Class 3 watercourse
- Contours
- Forest Headquarters
- Campground
- Gates
- Lookout
- Spring
- LaTour Property Boundary