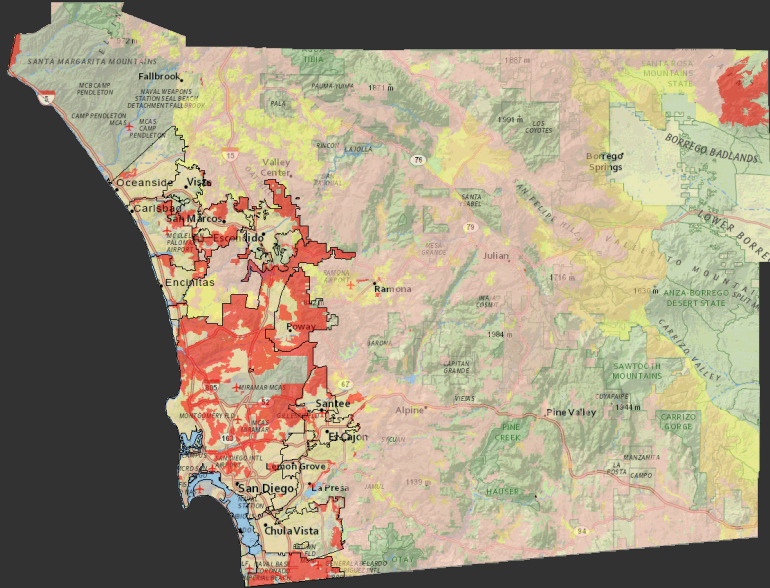


# Fire Hazard Severity Zones



***CAL FIRE***

# 2026 SRA Fire Hazard Severity Zones Update



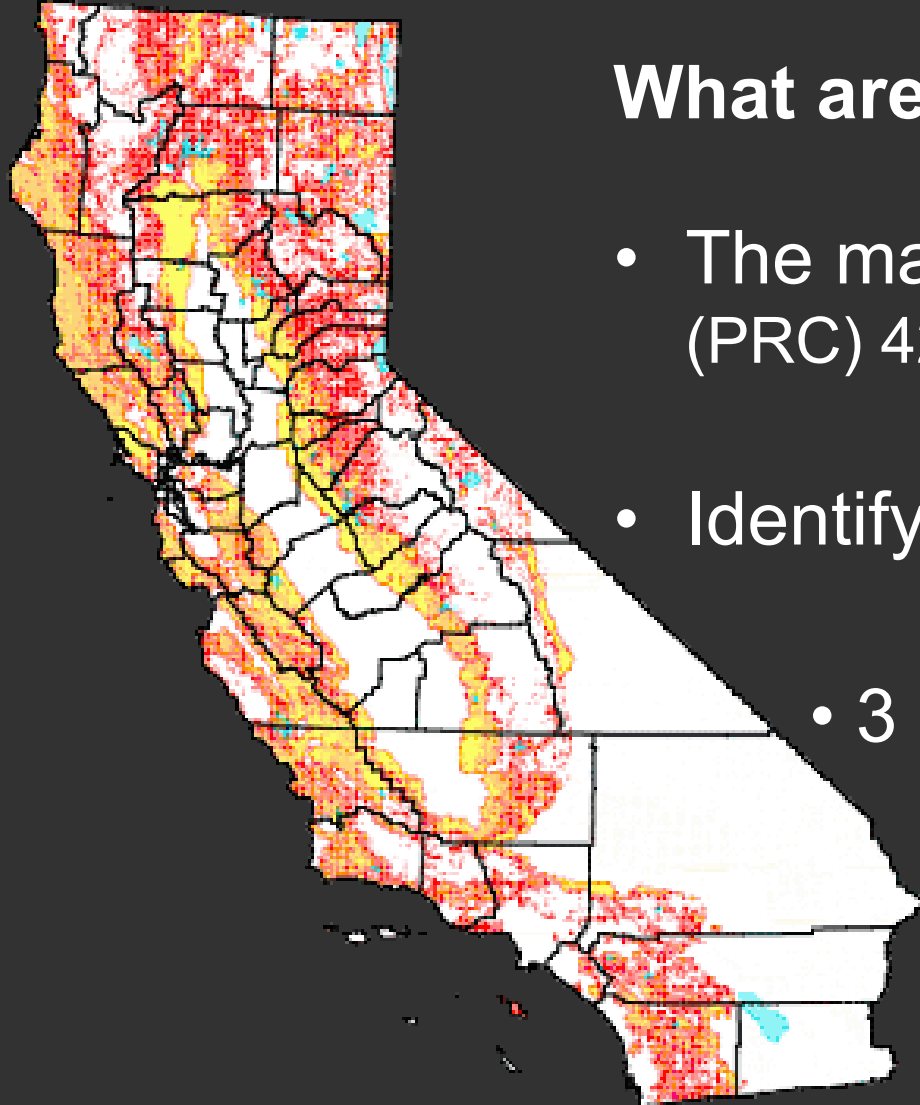
- Adopted boundary changes with land coming into the State Responsibility Area (SRA) from the 2025 5-year SRA Review.
- 34 Counties identified with boundary changes to be part of the update.

# Fire Hazard Severity Zones



## What are the Zones?

- The map updates are required by Public Resources Code (PRC) 4201-04
- Identify levels of fire hazard
  - 3 levels (Moderate, High, & Very High)



# Fire Hazard Severity Zones



## How are the Zones determined?

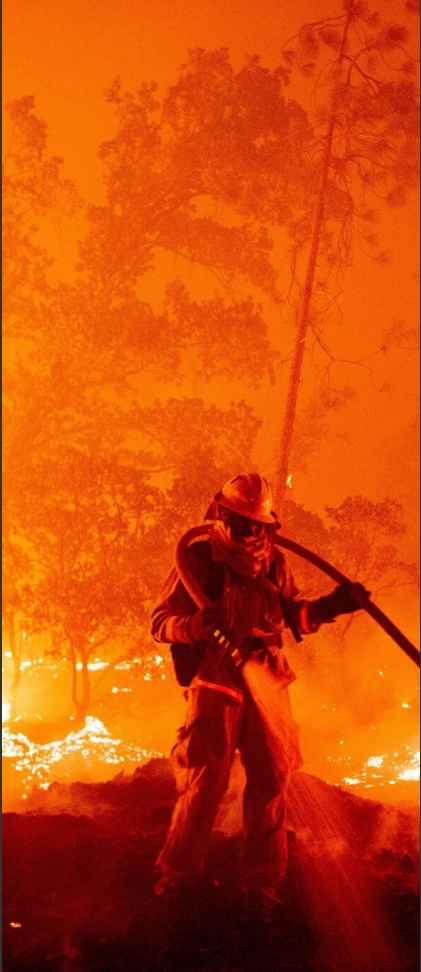
- Developed using a science-based model that assigns a hazard score based on the factors that influence fire likelihood and fire behavior.
- Factors: fire history, vegetation, topography, climate, ember production and movement



# Fire Hazard Severity Zones



- Updated burn probabilities for wildland areas (inclusive of 2020 fires)
- Updated fire environment footprints (urban/developed)
- Updated Vegetation density for urban areas
- Inclusion of slope in the urban zoning model
- Localized fire weather used in both wildland and urban models
- New firebrand production and transport model using discrete local wind vector distributions

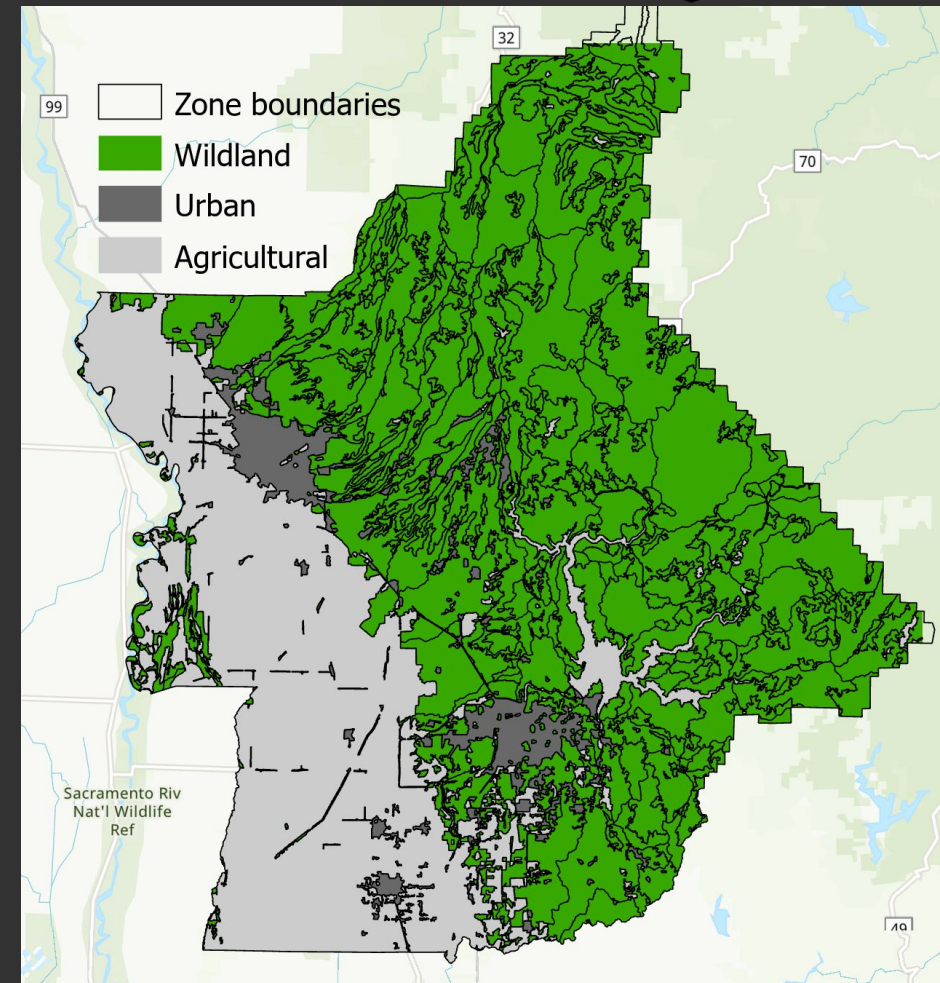


# Fire Hazard Severity Zones



## Wildland vs. Non-wildland Zones

- Zones are typically areas  $\geq 200$  acres with relatively homogeneous slope and vegetation
- Hazard map is produced at 30 m resolution
- Zone scores are average of fine scale data
- Wildland is scored independently of urban and agricultural
- Urban zones scored using additional model steps

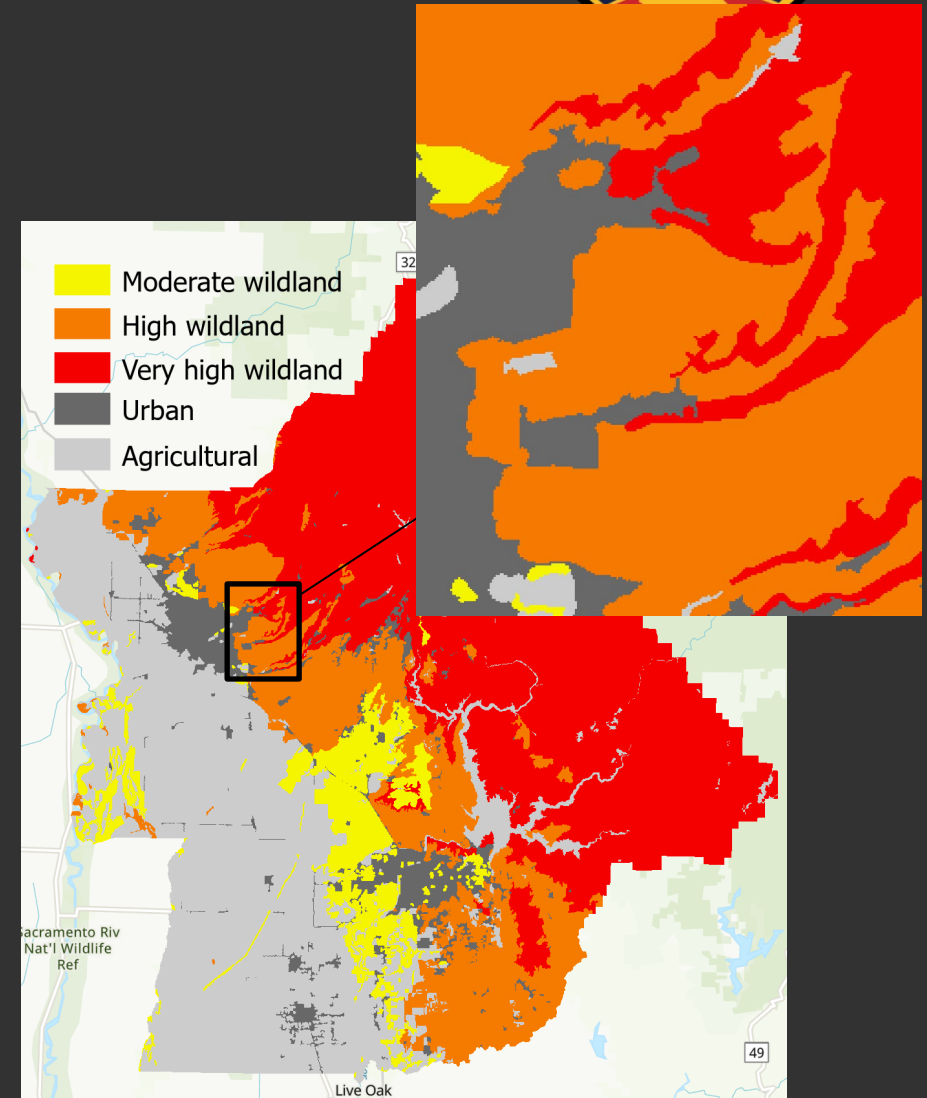


# Fire Hazard Severity Zones



## Wildland FHSZ

- Burn probability
  - Based on fire occurrence from 1991-2020
- Fire intensity
  - Vegetation type
  - Slope
  - Local fire weather – how hot/dry/windy are the worst conditions at a given location (based on 2 km data from 2003-2018)

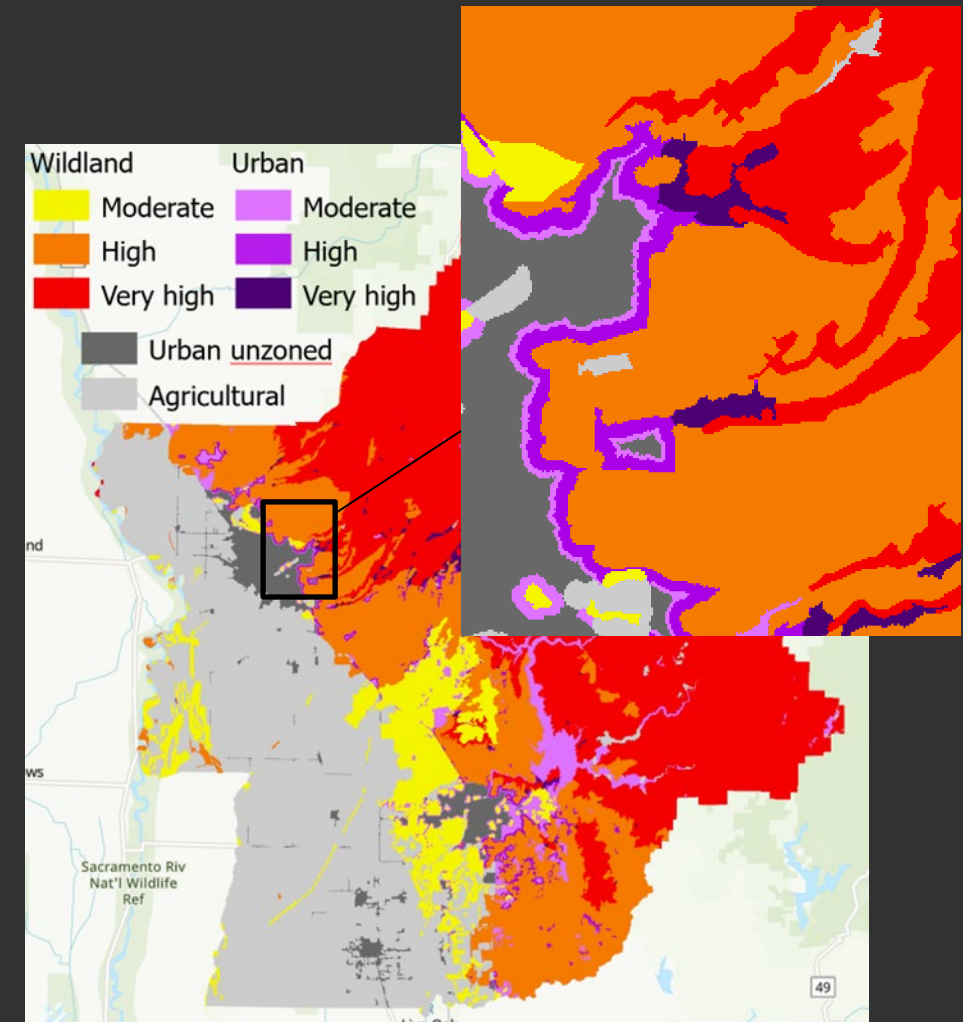


# Fire Hazard Severity Zones



## Urban FHSZ

- Based on distance to wildland and hazard level of adjacent wildland
- Ember production based on vegetation type and fire weather
- Ember transport based on wind speed/direction observed under the most extreme fire weather at a given location
- Width of moderate, high and very high bands in urban are based on ember load, urban tree cover and slope



# Fire Hazard Severity Zones



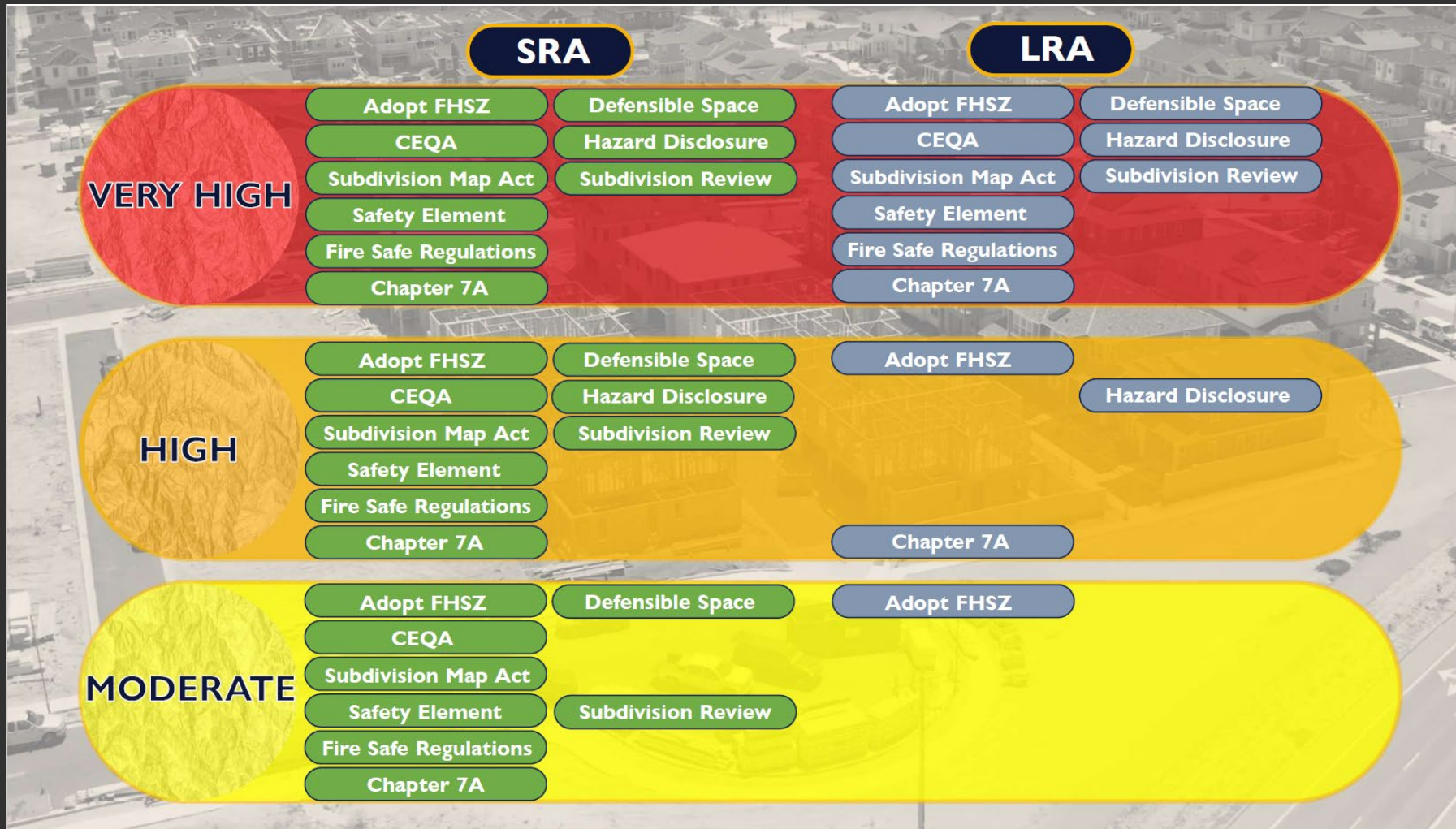
## What is the map for?

- Building standards for new construction in the Wildland-Urban Interface (California Building Code Chapter 7A)
- Property development standards such as road widths, water supply and signage (Fire Safe Regulations)
- Defensible Space Requirements (Public Resource Code 4291)
- Natural hazard real estate disclosure

# Fire Hazard Severity Zones



## What's Impacted...



# Fire Hazard Severity Zones



## SRA FHSZ Boundary Update Timeline

### June 2026

Stakeholders Meeting and County Stakeholders notified of boundary updates.

### Late June through July 2026 (60 day commit period)

Public Hearings to be hosted in Counties with changes and Sacramento County.



# Questions?



Web Information:

<https://osfm.fire.ca.gov/fire-hazard-severity-zones>

A screenshot of the CAL FIRE website. The page title is 'Fire Hazard Severity Zones'. The content includes a paragraph explaining that California's dry Mediterranean climate leads to wildfires, and CAL FIRE is required to classify fire hazard severity. Below this is a video player titled 'The History of Fire Hazard Severity Zone Maps' with a play button. To the right of the video is a text block with the same title and a brief history of the maps.

Emergency? Call 911 Translate Settings

ABOUT WHAT WE DO OUR IMPACT COMMITTEES RESOURCES JOIN US

Search safety information SEARCH

Home > What We Do > Community Wildfire Preparedness and Mitigation > Fire Hazard Severity Zones

## Fire Hazard Severity Zones

California's seasonally dry Mediterranean climate lends itself to wildfires, and in an effort to better prepare, CAL FIRE is required to classify the severity of fire hazard in areas of California.

The History of Fire Hazard Severity Zone Maps

### HISTORY OF FIRE HAZARD SEVERITY ZONE MAPS

Watch on YouTube

### The History of Fire Hazard Severity Zone Maps

Fire Hazard Severity Zone maps arose from major destructive fires, prompting the recognition of these areas and strategies to reduce wildfire risks. Legislative response led to mandated mapping across California under the California Public Resources Code 4201-4204, encompassing all State Responsibility Areas (SRA).

