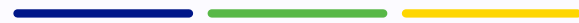




**How Utility Maintenance Roads, Fire Roads, and Truck
Trails Support, System & Vegetation maintenance,
Emergency Response, and Recovery**



Thom Porter and Richie Veihl





Access Road Infrastructure

Essential pathways enhancing maintenance and rapid emergency access and recovery efforts

Overview

Critical Access Corridors

Utility and fire roads provide essential access for emergency crews in difficult and remote terrain, enabling effective maintenance and response.

Force Multipliers for Response

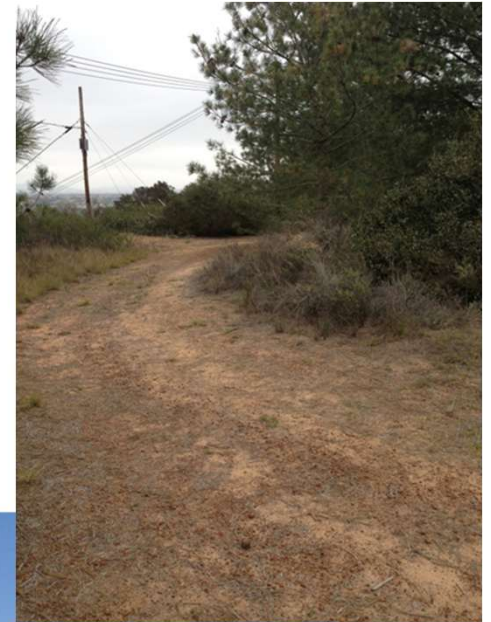
These roads reduce response times, expand operational reach, and increase responder safety during emergencies.

Strategic Role in Disaster Management

Utility and fire road networks support fire control, damage assessment, restoration, and recovery efforts in disasters.

Integrated Preparedness Planning

Proper maintenance and multi-agency coordination of these roads enhance disaster resilience and response effectiveness.



Emergency Response

Critical Access Routes

Utility and fire roads provide first responders rapid access to remote or congested areas during emergencies.

Responder Safety

Multiple ingress and egress points ensure alternative escape routes, enhancing safety during wildfires or flooding.

Operational Coordination

Access roads support staging areas for resource assembly and enable flexible resource deployment by commanders.

Infrastructure Incident Response

Maintenance roads allow crews quick access to damaged infrastructure, reducing hazards and outage duration.



Utility Incident Response

Purpose of Utility Roads

Utility roads enable rapid access for repair crews to critical infrastructure during emergencies, supporting quick restoration efforts.

Support for Emergency Repairs

These roads accommodate large equipment like bucket trucks and cranes needed for complex repairs during incidents such as storms or wildfires.

Ensuring Lifeline Resilience

Quick access via utility roads reduces outage durations, protecting and restoring critical Utility services required by communities, hospitals, and emergency facilities.



Disaster Recovery

Recovery Corridors Role

Utility roads and trails serve as critical corridors for moving personnel, equipment, and materials into disaster-affected areas.

Debris Removal Operations

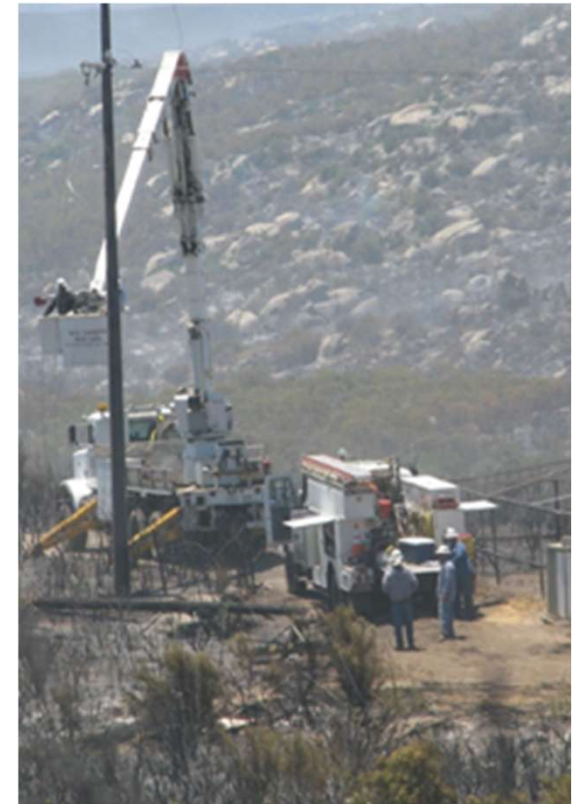
These routes enable clearing fallen trees, damaged poles, and landslide debris that block vital infrastructure and endanger public safety.

Support for Long-Term Restoration

Recovery roads support delivery of fuel, water, construction materials, and serve as staging areas or command posts for restoration efforts.

Community and Regional Resilience

Maintained recovery routes accelerate restoration of essential services and strengthen regional resilience beyond immediate emergency response.



Situational Awareness



Role of Access Roads

Access roads facilitate routine patrols and hazard identification, supporting emergency situational awareness effectively.

Vantage Points and Monitoring

Roads along elevated terrain provide vantage points for observing fire, weather, and infrastructure conditions accurately.

Support for Technology Deployment

These roads enable deployment and maintenance of cameras, sensors, weather stations, and drone launch sites for monitoring.

Enhanced Emergency Response

Improved situational awareness through access roads aids better decisions, resource allocation, and responder safety.

Interagency Coordination

Shared Operational Platforms

Utility, fire, law enforcement, and public works agencies use common roads for coordinated operations.

Enhancing Emergency Response

Inclusion of roads in GIS and pre-incident plans improves access and reduces conflicts during emergencies.

Supporting Mutual Aid

Clear road access enables out-of-area resources to quickly navigate unfamiliar terrain during mutual aid.

Strengthening Partnerships

Regular coordination on road maintenance and usage protocols builds long-term interagency collaboration.



Risk Reduction



Access for Vegetation Management

Utility and fire roads enable critical access for managing vegetation and reducing fuel that could feed wildfires.

Early Hazard Detection

Routine patrols along access roads improve early detection of hazards like damaged equipment or unauthorized activities.

Infrastructure Hardening Projects

These roads support infrastructure upgrades such as pole replacement, undergrounding, and fire-resistant material installation.

Long-term Community Safety

Investing in road maintenance and strategic use enhances community safety and infrastructure resilience against wildfires.

Key Takeaways



Critical Infrastructure Role

Maintenance roads and fire trails are vital for system maintenance, wildfire management strategies and emergency response.

Operational Benefits

These routes enable Safe maintenance, faster response times, improve safety, and support tactical operations during disasters.

Lifecycle Resilience

Road networks enhance mitigation, preparedness, response, and recovery throughout the system management lifecycle.

Force Multipliers

These roads strengthen resilience, protect lives, and accelerate recovery by integrating into planning and operations.



Thank you!