



Wildfire Mitigation Advisory Committee Meeting

May 16, 2023

CAL FIRE -

Office of the State Fire Marshal



Call to Order

Welcome!

- ▶ If you have technical difficulties during this meeting, please contact Kara Garrett at:
 - (916) 201-5539 or Kara.Garrett@fire.ca.gov



Roll Call / Quorum Established

- ▶ Acting State Fire Marshal
 - **Daniel Berlant**

- ▶ Department of Forestry and Fire Protection
 - **Vacant**

- ▶ Department of Conservation
 - **Keali'i Bright**

- ▶ Office of Energy Infrastructure Safety
 - **Caroline Thomas Jacobs or Sandy Cooney**

- ▶ State Board of Forestry and Fire Protection
 - **J. Lopez**

Continued on next slide



Roll Call / Quorum Established

- ▶ Governor's Office of Emergency Services
 - **Ryan Buras or Robert Troy**

- ▶ California Department of Insurance
 - **Deborah Halberstadt or Mike Peterson**

- ▶ Governor's Office of Planning and Research
 - **Neil Matouka**

- ▶ California Fire Safe Council
 - **Jacy Hyde**

- ▶ Insurance Institute for Business & Home Safety
 - **Roy Wright**

Continued on next slide



Roll Call / Quorum Established

- ▶ California Fire Chiefs Association
 - **Dave Winnacker or Todd Lando**

- ▶ California Building Industry Association
 - **Christopher E. Ochoa or Nick Cammarota**

- ▶ University of California Cooperative Extension
 - **Lenya N. Quinn-Davidson**

- ▶ California Fire Science Consortium
 - **Yana Valachovic**

- ▶ Department of Housing and Community Development
 - **Maziar Movassaghi or Clay Kerchof**

Continued on next slide



Roll Call / Quorum Established

- ▶ Rural County Representatives of California
 - **Staci Heaton**

- ▶ California Association of Resource Conservation Districts
 - **Sophia Lemmo**

- ▶ League of California Cities
 - **Sean McGlynn**

- ▶ California State Association of Counties
 - **Catherine Freeman**

- ▶ A representative from tribal government
 - **Don Hankins**



Approval of Past Meeting Minutes Motion Required

- ▶ Scan the QR Code Below to Access the Complete Meeting Minutes Document!



WILDFIRE MITIGATION ADVISORY COMMITTEE MEETING *Meeting Minutes – Tuesday, April 18, 2023* *Posted: 4/25/2023*



Committee Members Present

Daniel Berlant, Office of the State Fire Marshal (Virtual)
Caroline Thomas Jacobs, Office of Energy Infrastructure Safety
J. Lopez, State Board of Forestry and Fire Protection
Robert Troy, California Office of Emergency Services
Deborah Halberstadt, California Department of Insurance (Virtual)
Beth Hotchkiss, Office of Planning and Research
Roy Wright, Insurance Institute for Business & Home Safety
Dave Winnacker, California Fire Chiefs Association (Virtual)
Chris Ochoa, Representative from the Building Industry
Lenya N. Quinn-Davidson, University of California Cooperative Extension (Virtual)
Clay Kerchof, Department of Housing and Community Development (Virtual)
Staci Heaton, Rural County Representatives of California
Sophia Lemmo, California Association of Resource Conservation Districts (Virtual)
Catherine Freeman, California State Association of Counties

Members Absent

Jacy Hyde, California Fire Safe Council
Keali'i Bright, Department of Conservation
Anale Burlew, Department of Forestry and Fire Protection
Yana Valachovic, California Fire Science Consortium
Sean McGlynn, League of California Cities
Don Hankins, Professor, CSU Chico

CAL FIRE Staff in Attendance

Frank Bigelow, Assistant Deputy Director
Matt Damon, Staff Chief
Jim McDougald, Staff Chief
Dennis O'Neil, Assistant Chief
Scott Witt, Deputy Chief (Virtual)
Steve Hawks, Retired Annuitant
Wendy Collins, Assistant State Fire Marshal (Virtual)
John Morgan, Deputy Chief (Virtual)
Mark Rosenberg, Research Data Manager (Virtual)
Carmel Bamhart, Deputy Chief (Virtual)
Crystal Sujeski, Deputy State Fire Marshal Supervisor (Virtual)
Tony Andersen, Deputy Director (Virtual)
Kara Garrett, Associate Governmental Program Analyst

1. CALL TO ORDER 1:00 PM

- A. Welcome
The meeting was called to order at 1:00 PM by Daniel Berlant.

Daniel Berlant



Approval of Meeting Agenda Motion Required

- ▶ Scan the QR Code Below to Access the Complete Meeting Agenda Document!



WILDFIRE MITIGATION ADVISORY COMMITTEE MEETING Meeting Agenda – Tuesday, May 16, 2023, 1:00 PM – 3:00 PM Posted: May 3, 2023



Location:
CNRA Building, 715 P Street, 2nd Floor Conference Room 2-221(A-C)
Sacramento, CA 95814

Zoom Meeting Information –
Please click the link below to join the webinar:
<https://us06web.zoom.us/j/85192423489?pwd=dnZyaUhxVFluUTFmT21nMzJYYVlxQT09>
Passcode: 462073

1. CALL TO ORDER
 - A. Welcome
 - B. Roll Call/Quorum Established
 - C. Approval of Past Meeting Minutes (Motion Required)
 - D. Agenda Review (Motion Required)
2. OLD BUSINESS
 - A. Risk Modeling
 - 1) Work Group Update
 - B. Division Report
3. NEW BUSINESS
 - A. CAL FIRE – Office of the State Fire Marshal – Utility Wildfire Mitigation Program Overview
 - B. Pacific Gas and Electric Company – Sharing Information on Progress, Outreach Efforts, and Key Programs
 - C. Community Wildfire Planning Center (CWPC) – Land Use Planner Training and CWPP Best Practices Toolkit
4. ROUNDTABLE
5. PUBLIC COMMENT
6. UPCOMING MEETING DATES FOR 2023
 - A. Third Tuesday of each month starting at 1 PM and ending at 3 PM.
 - a. June 20, 2023, we will be in a different conference room, same building.
 - i. CNRA Building, 715 P Street, 2nd Floor Conference Room 2-221
Sacramento, CA 95814
7. MEETING ADJOURNMENT (Motion Required)



Risk Modeling Advisory Workgroup Update

- ▶ June 20th - Draft Report on the workgroup's recommendations will be shared.
- ▶ Contacts for the workgroup are listed below:
 - Jim McDougald
 - Jim.McDougald@fire.ca.gov
 - Celeste Jovanovic
 - Celeste.Jovanovic@fire.ca.gov





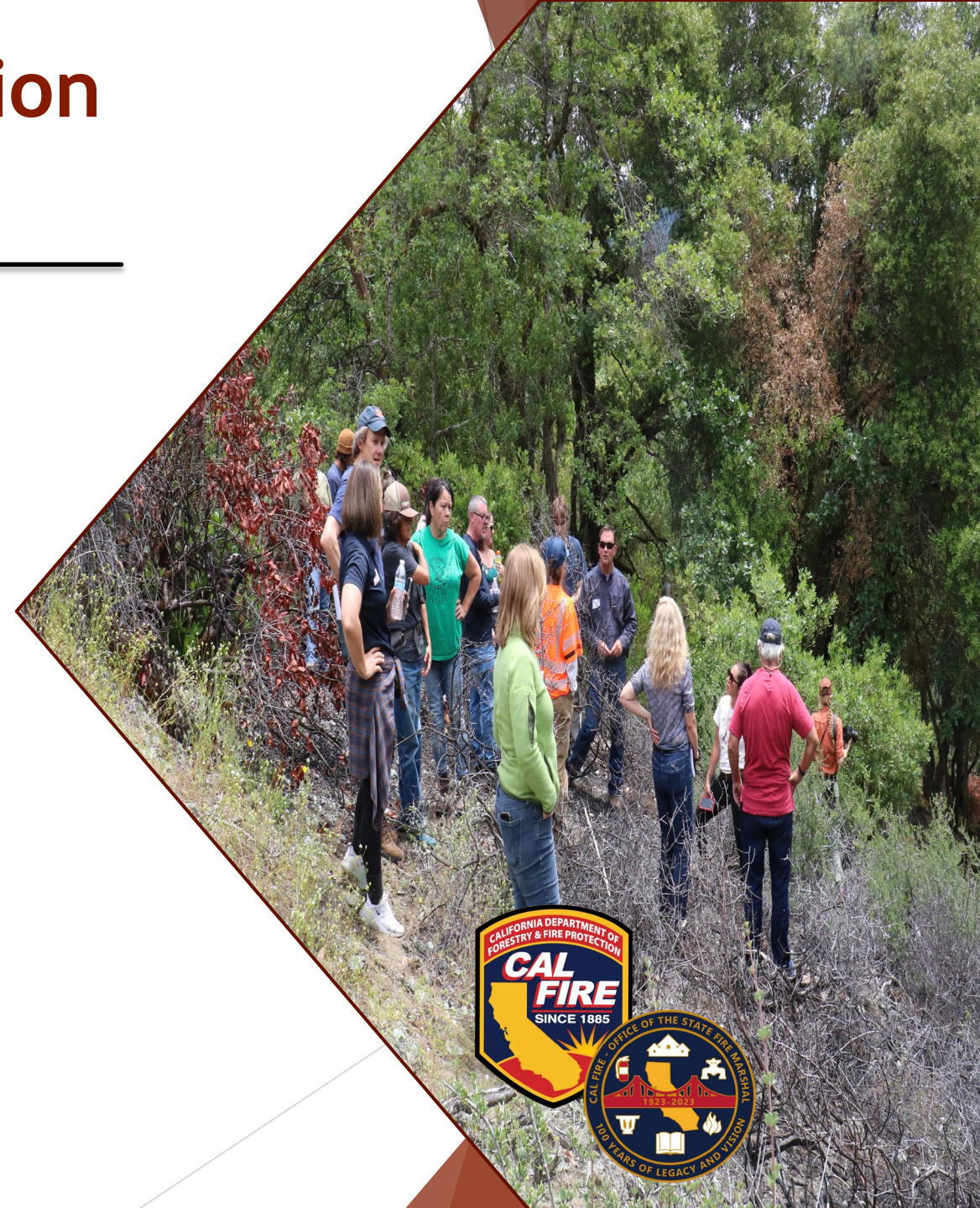
Community Wildfire Preparedness and Mitigation Division Report



Community Wildfire Mitigation Assistance

Firewise

- ▶ California continues to lead the nation with **676** National Fire Protection Association (NFPA) Firewise USA Communities in good standing.
- ▶ Continuing to equate to over **30%** of all NFPA Firewise USA Communities nationwide.



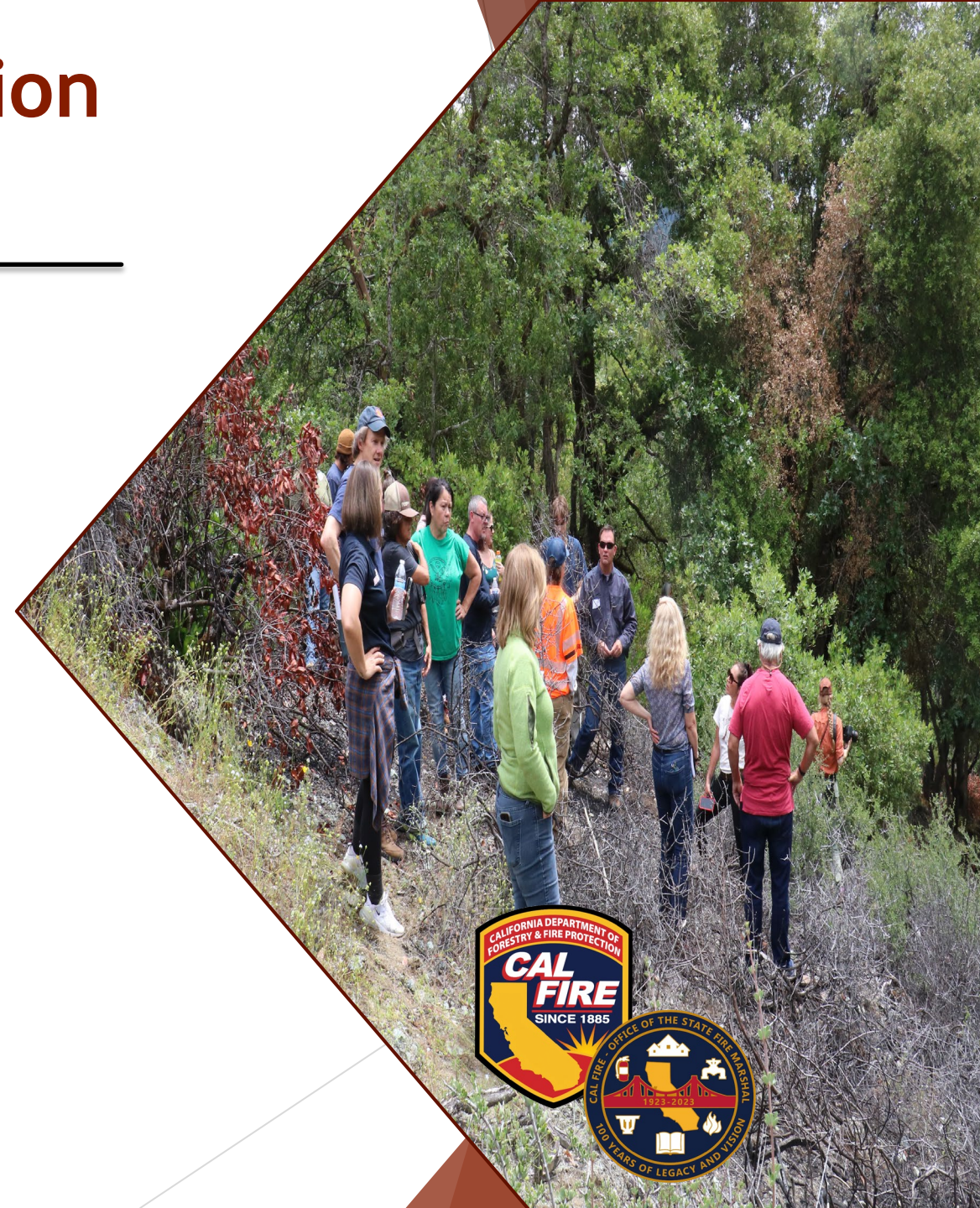
Community Wildfire Mitigation Assistance

Wildfire Prevention Grants

- ▶ Received nearly **250** applications totaling approximately **\$400** million.
- ▶ FY 22-23 Grant Awards to be announced in early July.

Land Use Planning

- ▶ Final class for this year scheduled in Sacramento on May 17, 2023.



Wildfire Planning and Statistics

California Incident Data & Statistics Program

- ▶ Fire Hazard Severity Zone (FHSZ) public comment period closed April 4, 2023.
 - ▶ Currently reviewing over 1000 public comments received.
- ▶ Developing a Community Wildfire Protection Plan (CWPP) tool kit and updated website to assist local jurisdictions and community organizations with CWPP development.



Wildfire Planning and Statistics

Fire Prevention Efforts (July 2022 - April, 2023)

- ▶ **Fuel Reduction Projects:**
 - **443** projects, 88% of the goal
- ▶ **Combined Fuel Reduction:**
 - **47,594** acres treated, 47% of the goal
 - Unit Projects - 26,792 acres
 - Grant Projects - 20,802 acres
- ▶ **Prescribed Fire (also counted in fuel reduction):**
 - **20,501** acres treated, 77% of the goal



Wildfire Preparedness

- ▶ Defensible Space Inspections:
 - 194,105 inspections, 77% of the goal
- ▶ Burn Permits:
 - Every year on May 1st and thereafter, you must apply for a new burn permit.
 - <https://burnpermit.fire.ca.gov/>



Utility Wildfire Mitigation Program

- ▶ Participated in the CPUC Joint Investor-Owned Utility (IOU) PSPS post season workshop on April 19th.
- ▶ The IOUs presented on last year's PSPS events, lessons learned, any improvements in forecasting, notifications, communications, and interactions between PSPS and Fast trip.





Utility Wildfire Mitigation Program

Jeff Fuentes



Utility Wildfire Mitigation Program



Discussion Topics

- State Responsibility Area and Utilities
- Electrical power ignition stats and trends
- Ignition drivers
- Grid Hardening
- Public Resource Codes (PRC) 4292 and 4293
- Powerline Fire Prevention Field Guide and Pocket Guide



In State Responsibility Area

Investor-Owned Utilities

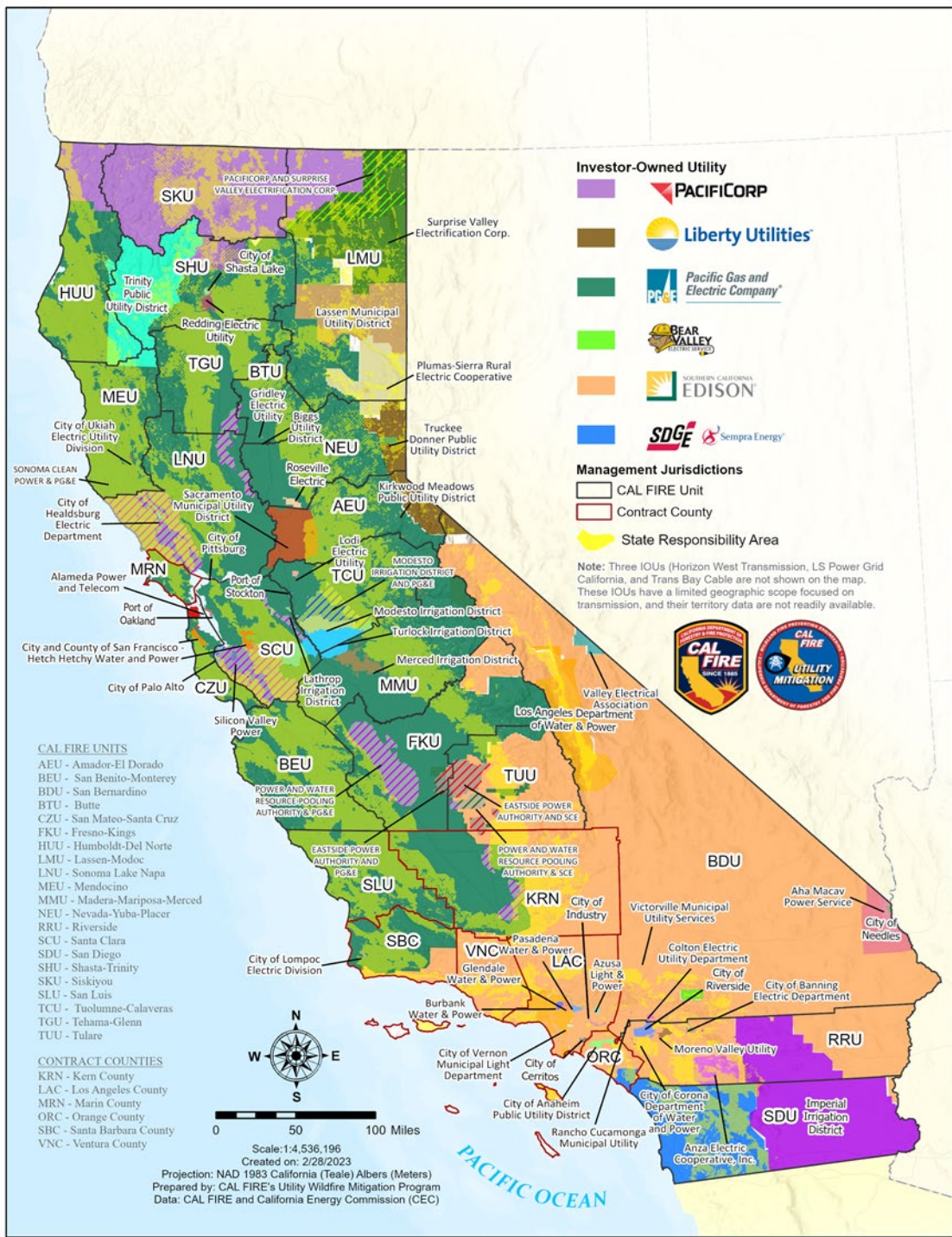
- PG&E
- SCE
- SDG&E

Small Multi-Jurisdictional Utilities

- PacifiCorp
- Bear Valley
- Liberty

Publicly Owned/Cooperative Utilities

- 30+ Utilities



Electrical Power Cause - Statistics

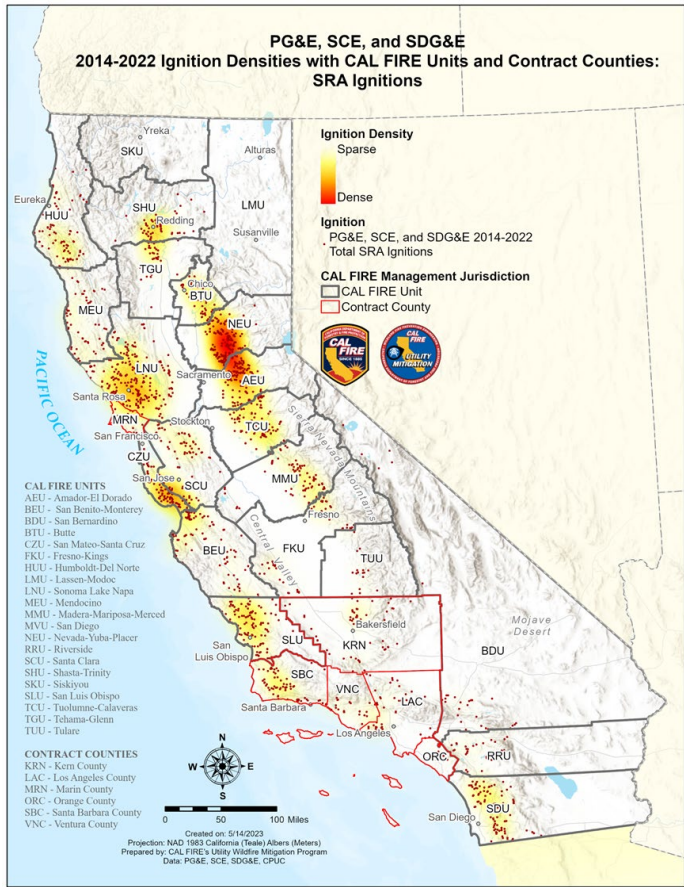
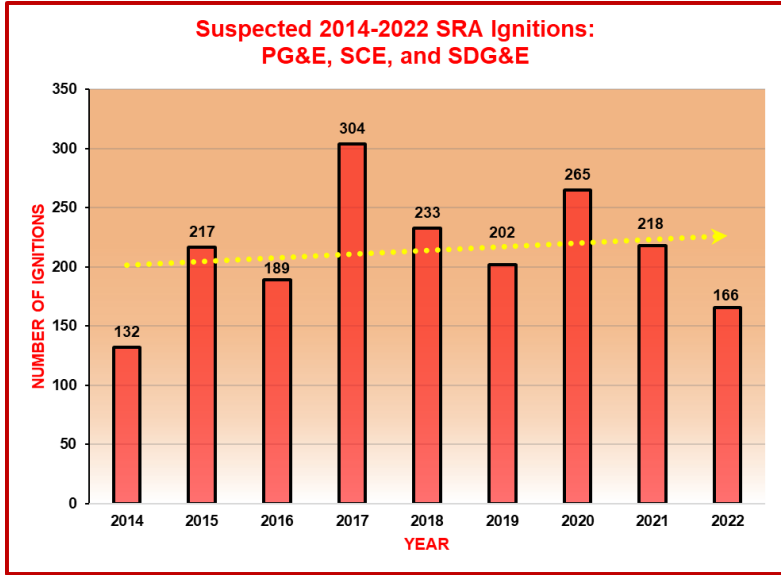
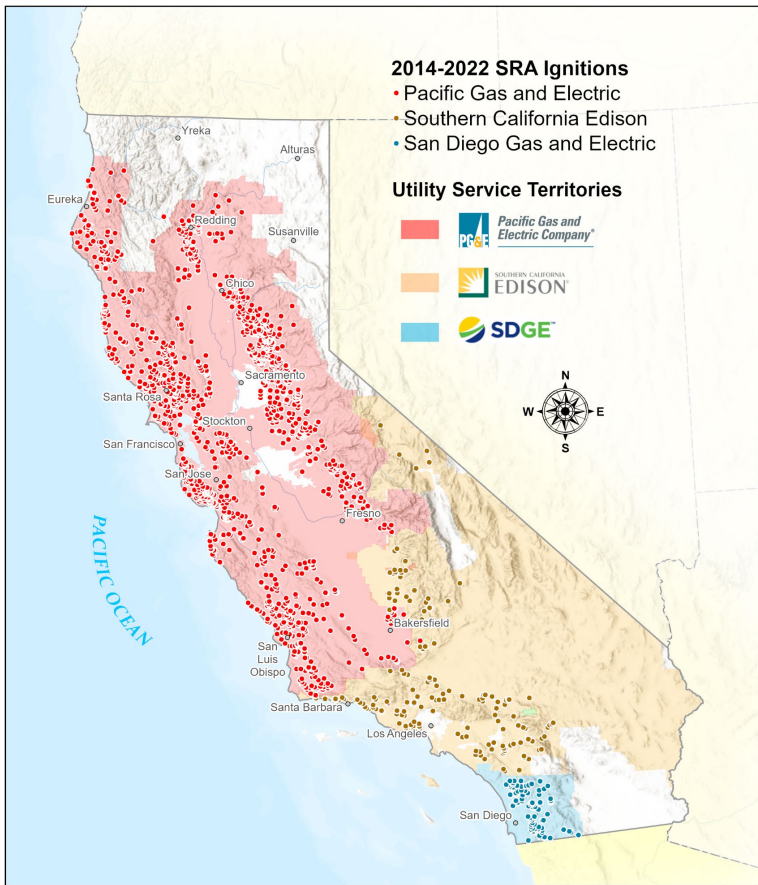
On average 10% of Wildland Fires in State Responsibility Area's are Electrical Power Caused*



- 6 of the Top 20 Destructive California Wildfires
- 3 of the Top 20 Largest California Wildfires
- 3 of the top 20 Deadliest California Wildfires



* Based on 9-year average from CAL FIRE Redbook 2014 - 2022

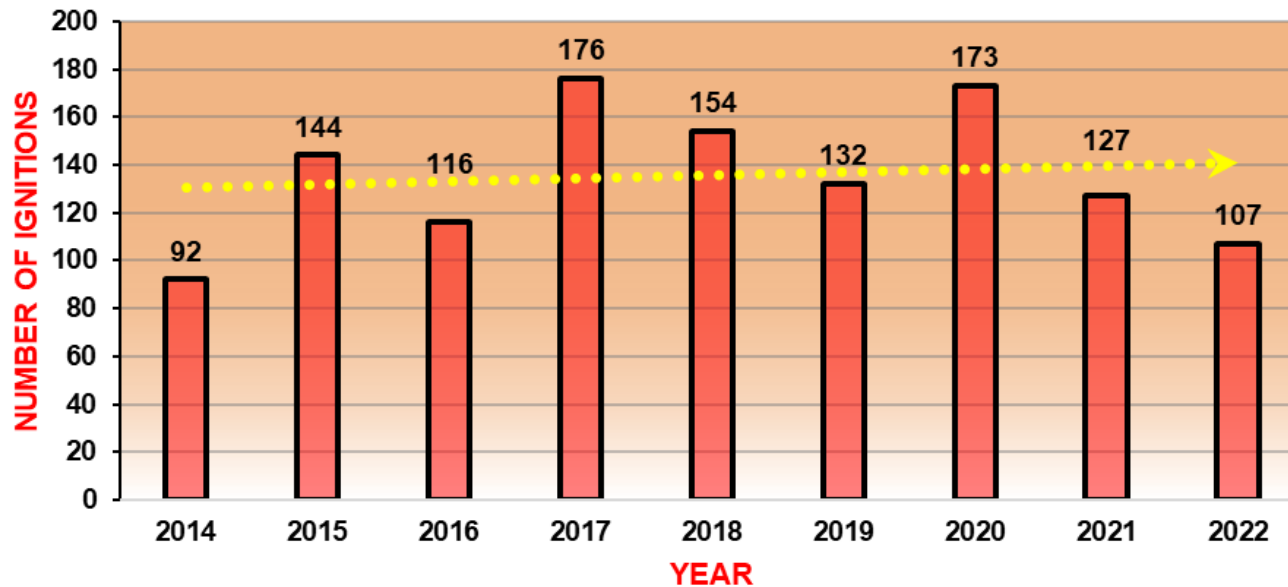


Investor-Owned Utility 2014 – 2022 State Responsibility Area (SRA) Ignitions

2014-2022 ignitions numbers in this PowerPoint are from annual CPUC reportable ignitions data IOUs submit to the CPUC.

Highest Utility-Related SRA Cause from 2014-2022

**Object Contact Overall as Suspected 2014-2022
SRA Ignition Cause Per Year: PG&E, SCE, and SDG&E**



2014-2022 ignitions numbers in this PowerPoint are from annual ignitions data IOUs submitted to the CPUC.

63% of SRA utility-related ignitions are caused by Contact from Object. Below are the top object contact causes with %:

- Vegetation: 36%
- Animal: 13%
- Vehicle: 9%
- Balloon: 3%

VEGETATION CONTACT

vegetation contacting power lines or other equipment.



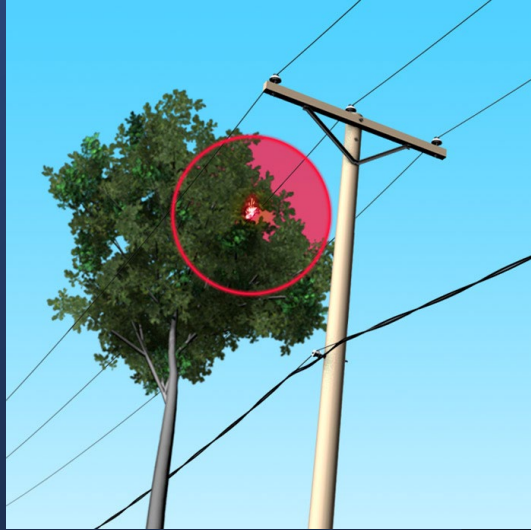
Tree across powerlines



Branches across powerlines



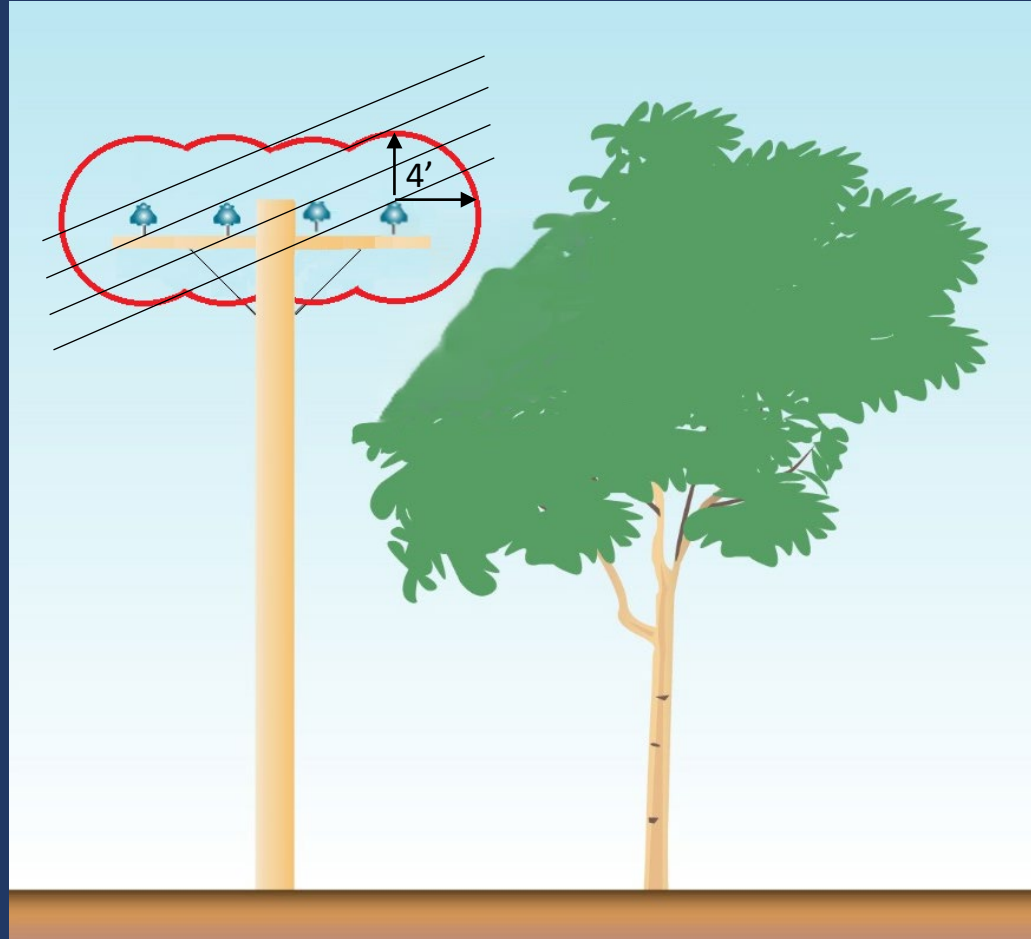
Minimum Conductor Clearances



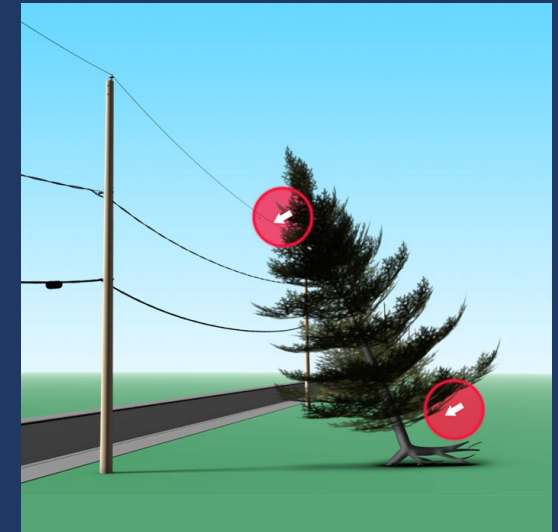
Voltage-based

- 4 Feet 2.4 - 72 kV
- 6 Feet 72 - 110 kV
- 10 Feet. Over 110 kV

Public Resource Code (PRC) 4293



Also includes Hazard Tree Removals



Dead trees, old decadent or rotten trees, trees weakened by decay or disease and trees or portions thereof that are leaning toward the line which may contact the line from the side or may fall on the line shall be felled, cut, or trimmed so as to remove such hazard.

Tree Hazards

Non-exhaustive
list of Tree
Defects



Insect Infestation



Conks



Canker



Cat Face



Open Wounds



Codominant Tops



Cracks



Shallow Roots

ANIMAL CONTACT

animals, animal nests, bird droppings on electrical equipment.



VEHICLE CONTACT

vehicle hitting a power pole or other asset.



BALLOON CONTACT

Mylar balloon contacting power lines or other equipment.



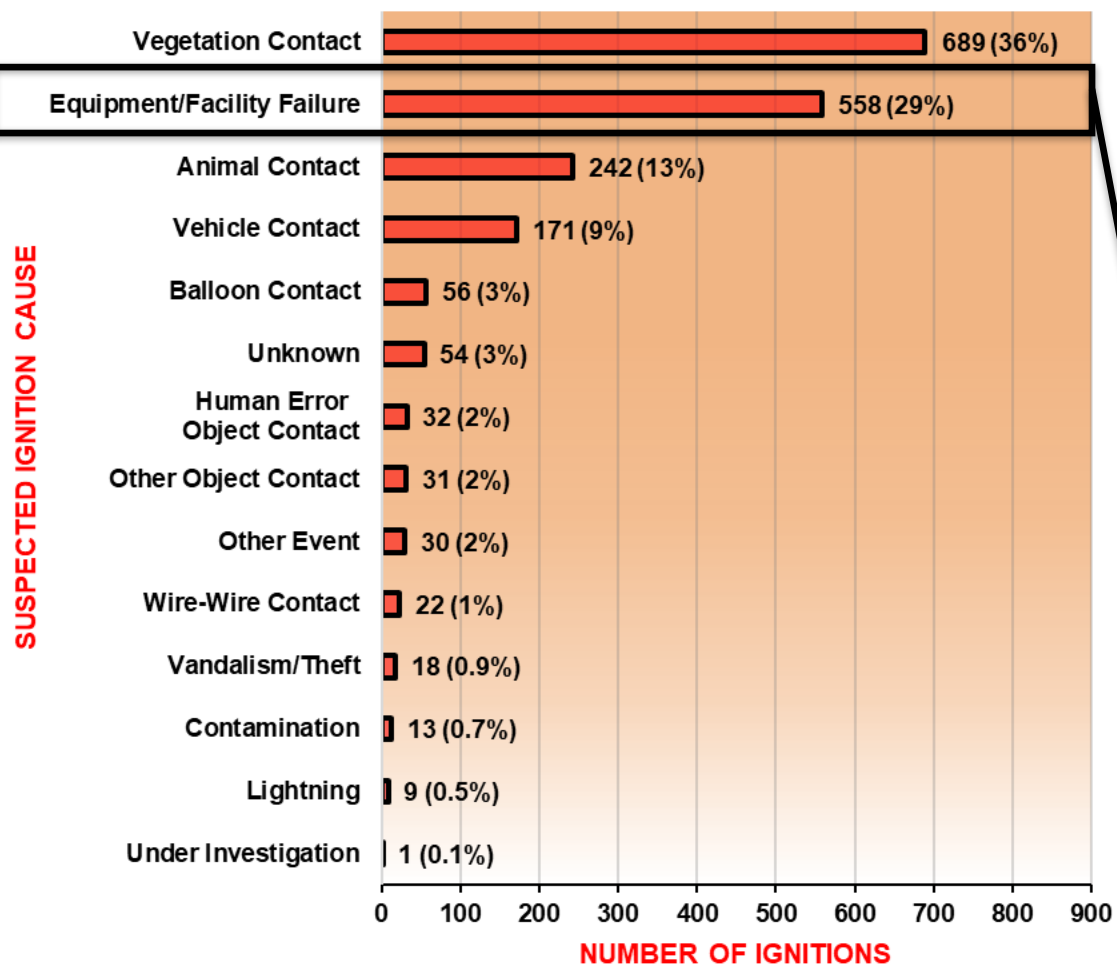
Grid Hardening

- Undergrounding
- Covered Conductor
- Wildlife Coverings
- Jumper Coverings
- Fire Resistive Poles (Steel, Composite, Wood wrapped in fire resistant wrapping).
- Using equipment that does not create arc or sparks under normal operation.
- Composite Crossarms
- New Emerging Technologies

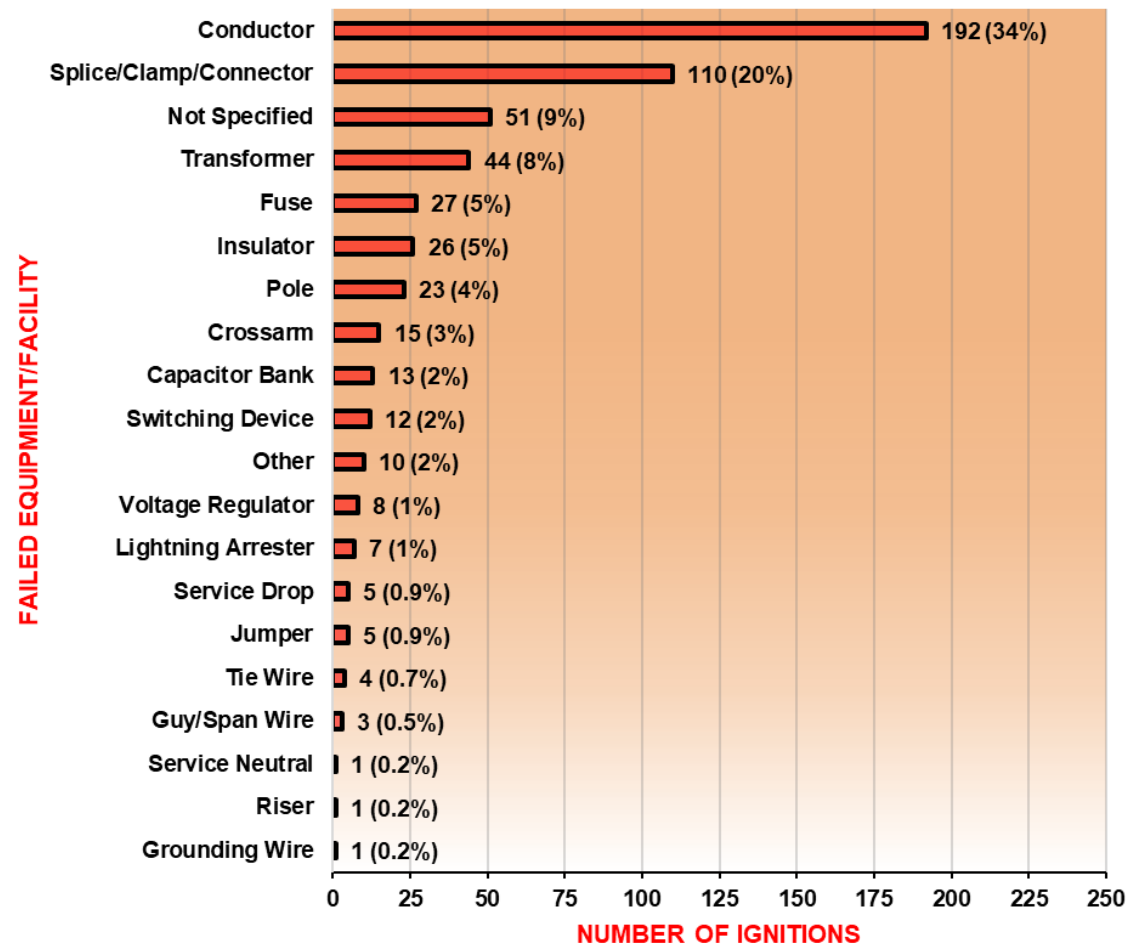


Breakdown of All Utility-Related SRA Ignitions: 2014-2022

Suspected 2014-2022 SRA Ignition Causes: PG&E, SCE, and SDG&E



Suspected 2014-2022 SRA Equipment/Facility Failure Ignition Causes: PG&E, SCE, and SDG&E



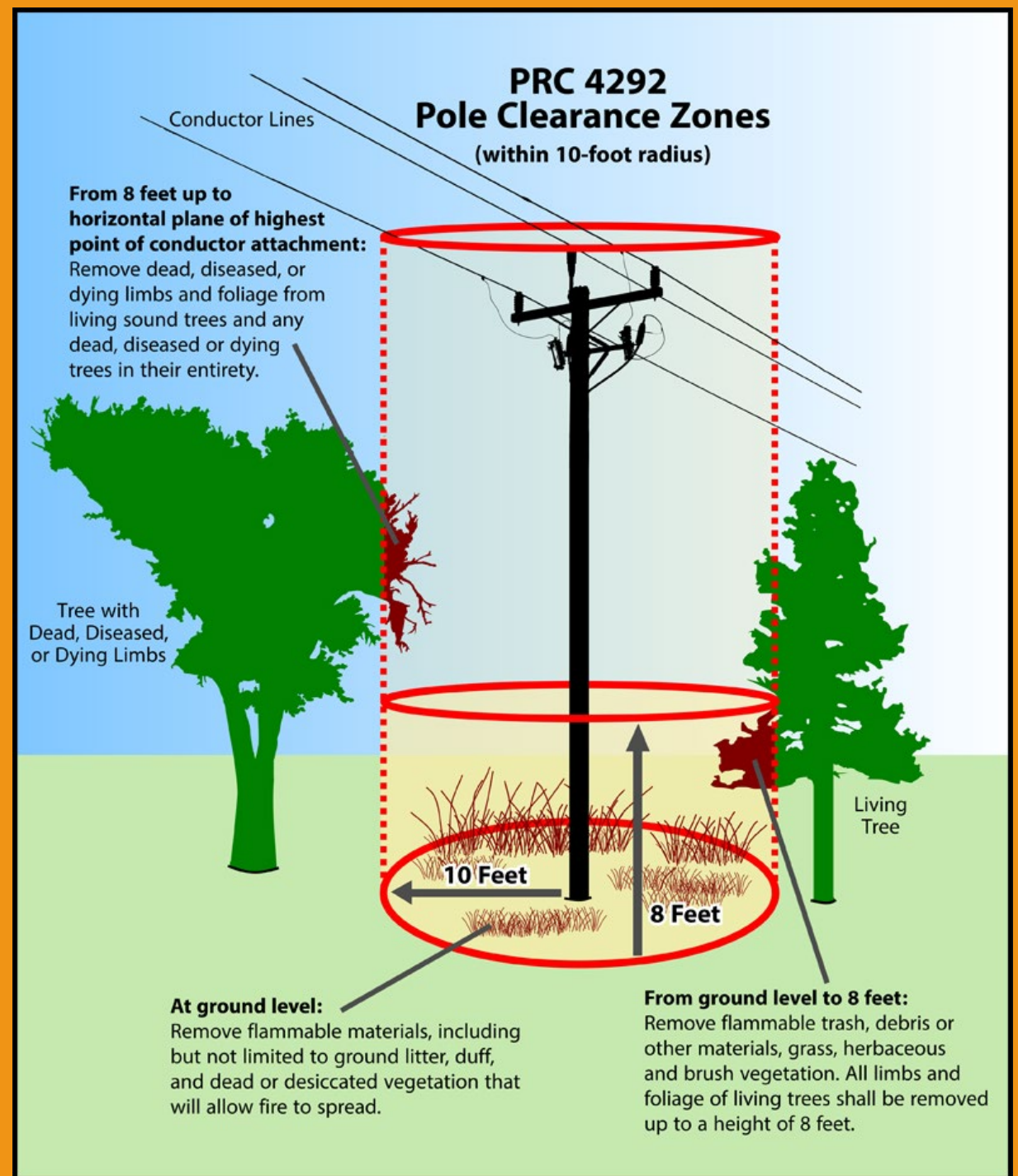
PRC 4292 Clearance

Clearance

- 10' flammable material clearance from outer circumference of pole or tower.
- 0-8' flammable material clearance above ground level.
- Removal of all dead, diseased, and dying limbs and foliage from height of 8' to conductors

Flammable material includes:

- Grass, herbaceous and brush vegetation, limbs, foliage of living trees up to 8'.
- Remove flammable trash, debris, other materials.



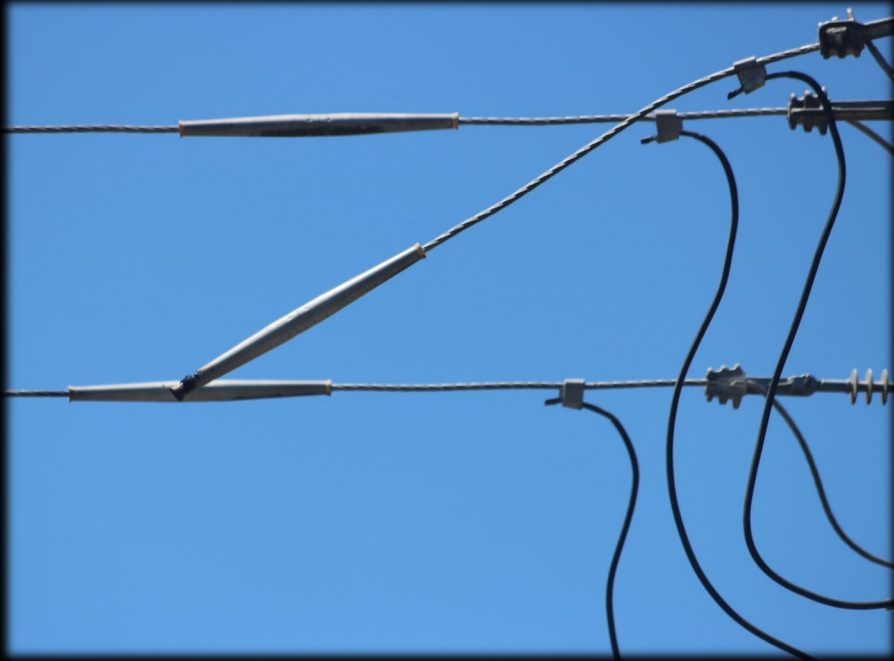
PRC 4292 - What Poles require clearance

- Power lines must have more than 750 volts (PRC 4296).
- Any pole or tower which supports a switch, fuse, transformer, lightning arrestors, line junction, or dead end or corner pole. (PRC 4292).
- Any pole or tower within the (SRA) State Responsibility Area (CA Code of Regulations CCR Title 14 Section 1252).
- Applies during CAL FIRE declared Fire Season (CCR Title 14 Section 1253).
- If all the equipment being used on the pole is Exempt Equipment (CCR Title 14 Section 1255 or Exempt hardware section of Power Line Fire Prevention Field Guide).



EQUIPMENT/FACILITY FAILURE

failure of equipment or other infrastructure.



Automatic Splice Failure



Fuse Failure



Pole Failure

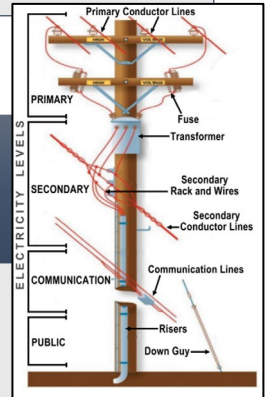
Powerline Fire Prevention Field Guide

Collaborative Document

- CAL FIRE
- USFS
- BLM
- CPUC
- Energy Safety
- Utilities

Includes:

- Basic Power Systems, Levels of Power
- Codes, Rules, Regs, PRC4292/4293
- Best practices to reduce utility-related ignitions.
- Best practices for Identifying and inspecting Hazard trees
- Powerline Equip ID (Exempt & Non-Exempt)



California Power Line Fire Prevention Field Guide



2021 EDITION



Powerline Equipment
Identification
Pocket Guide
In Accordance with
Public Resources
Codes 4292 & 4293
January 1, 2022



Joint Powerline Fire Prevention Training

- Cross-training Field Staff and Defensible Space Inspectors on Powerline Hazards
- Interagency Powerline Fire Prevention Training
- Joint Patrols (utility and fire agency)



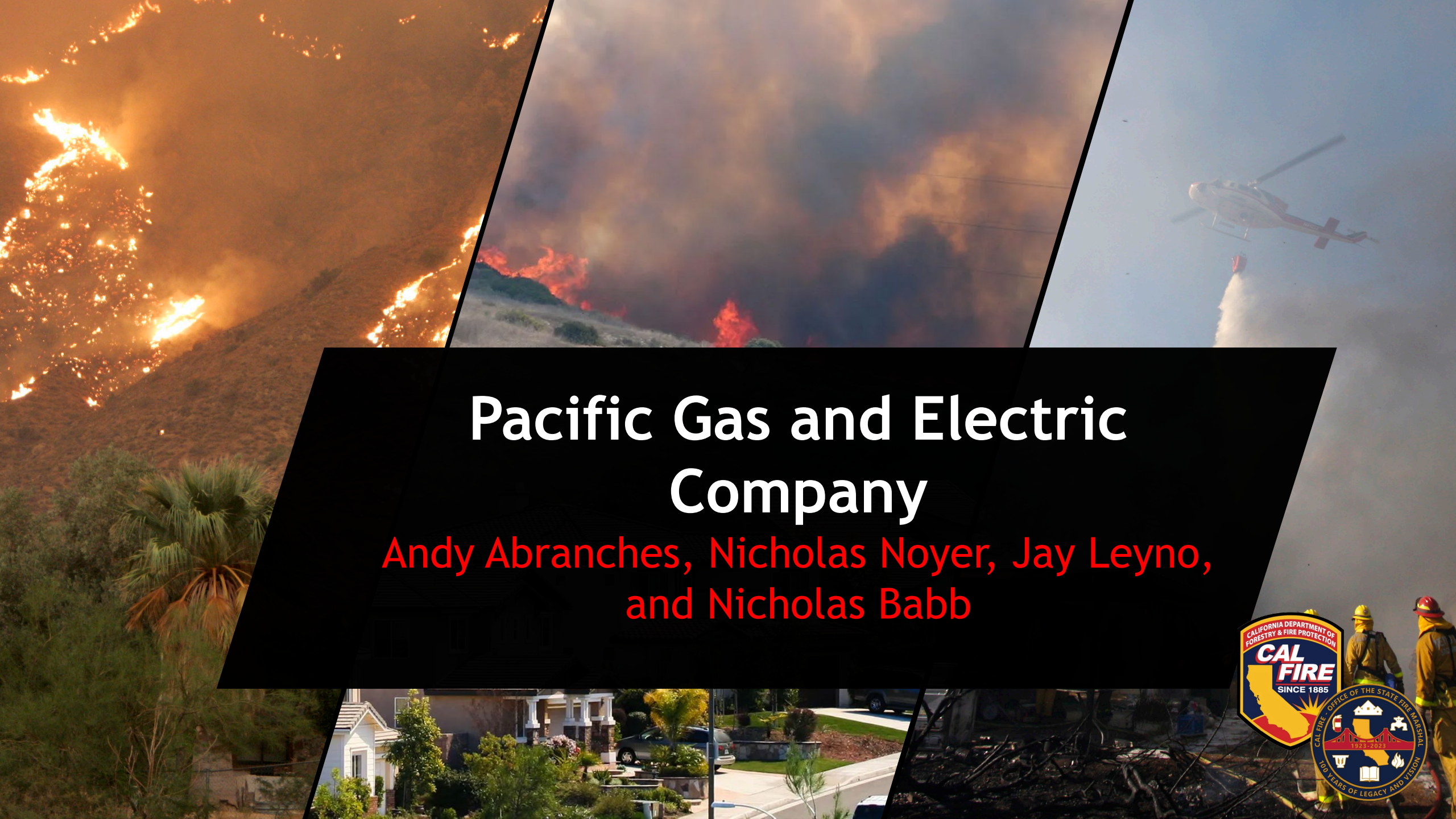
CAL FIRE - Utility Fire Mitigation Contacts

Questions?

Jeff Fuentes
Assistant Chief

Jeff.Fuentes@fire.ca.gov





Pacific Gas and Electric Company

Andy Abranches, Nicholas Noyer, Jay Leyno,
and Nicholas Babb



Pacific Gas and Electric Company

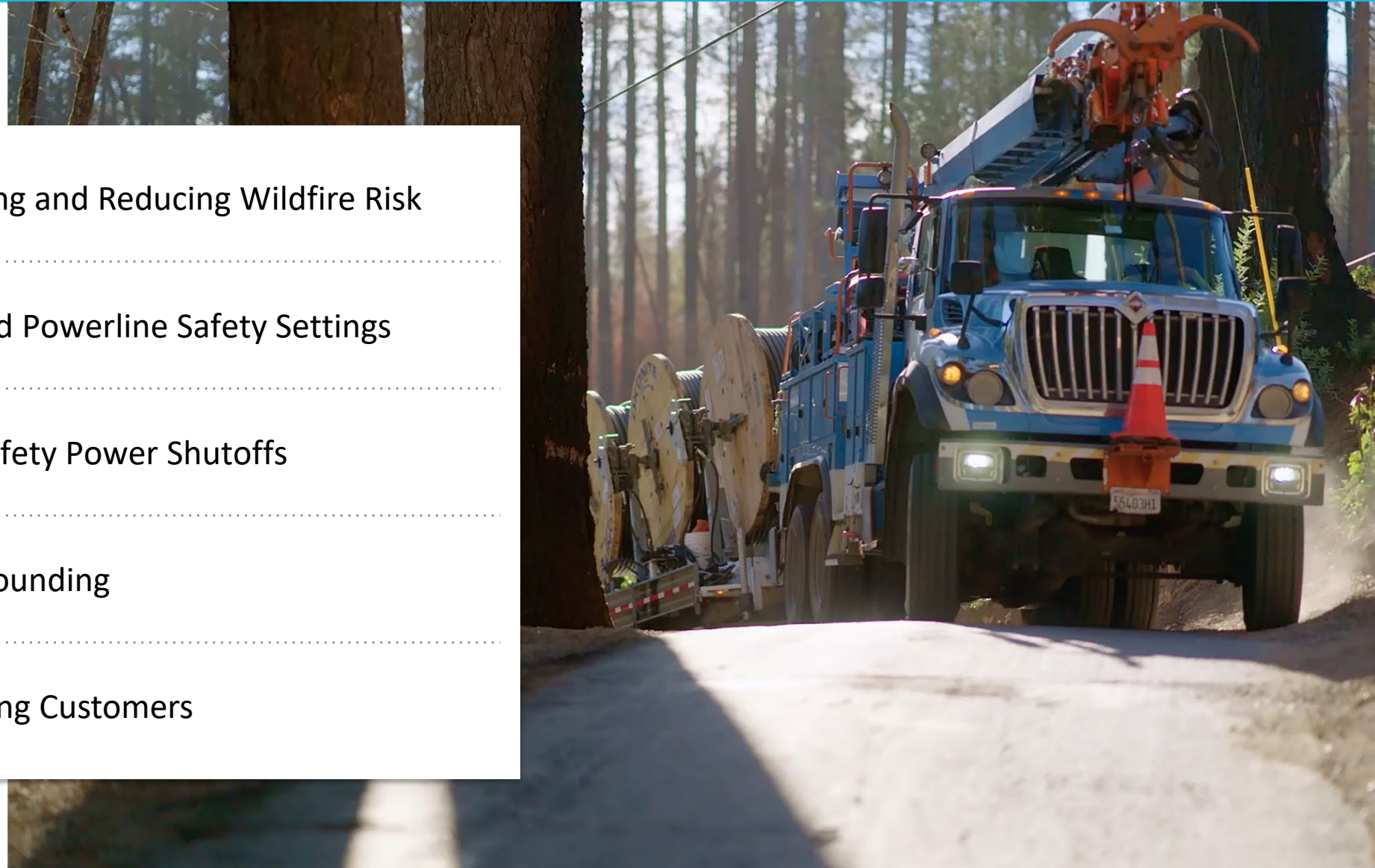
Wildfire Mitigation Advisory Committee Meeting

May 16, 2023



Topics For Discussion

- 1 Identifying and Reducing Wildfire Risk
- 2 Enhanced Powerline Safety Settings
- 3 Public Safety Power Shutoffs
- 4 Undergrounding
- 5 Supporting Customers





Responding to Evolving Wildfire Risk

2020

2021

2022

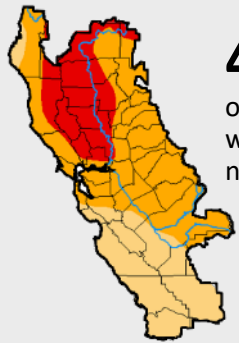
2023

CLIMATE CHANGE LEADING TO A PROLONGED AND INTENSIFIED WILDFIRE SEASON

Drought-intensified wildfire risk

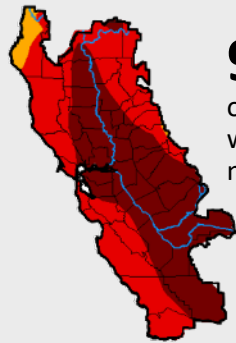
Moderate drought conditions

Significant increase in wildfire activity on non-Red Flag Warning (RFW) days



47%
of acreage burned by
wildfires ignited on
non-RFW days

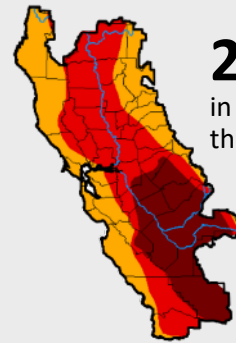
U.S. drought monitor
Map as of 12/29/2020



95%
of acreage burned by
wildfires ignited on
non-RFW days

U.S. drought monitor
Map as of 11/2/2021

★ **Implementation
of EPSS pilot**



2nd driest year
in the last 128 years
through peak wildfire
season

U.S. drought monitor
Map as of 11/1/2022

Expansion of EPSS to all
high fire-risk areas



~8% of CA
remains in drought

U.S. drought monitor
Map as of 4/25/2023

Adding additional protection
and refining EPSS

**99% reduction in acres burned
68% reduction in ignitions***

MAP LEGEND D0: Abnormally dry D1: Moderate drought D2: Severe drought D3: Extreme drought D4: Exceptional drought PG&E service area

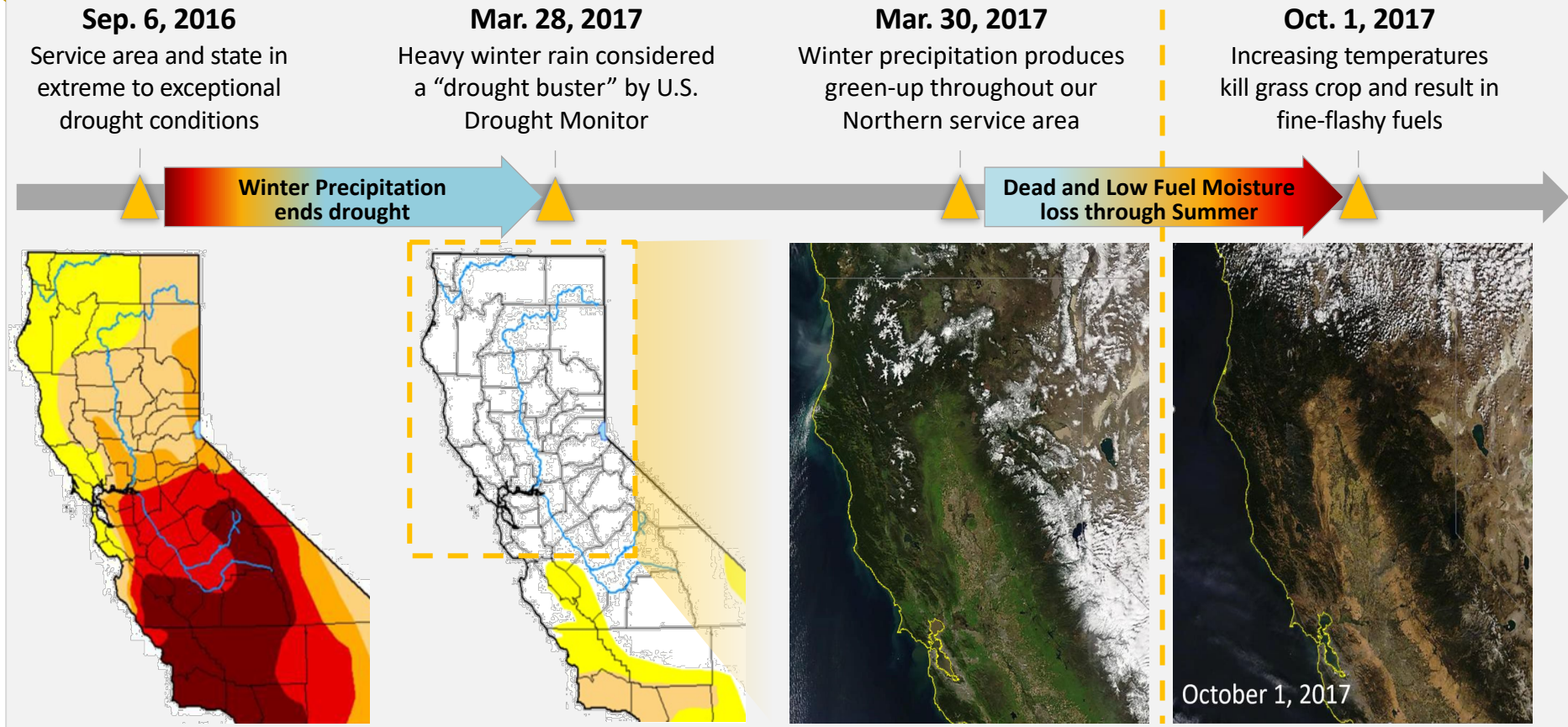
Some of the measures included in this presentation are contemplated as additional precautionary measures intended to further reduce the risk of wildfires.

*CPUC-reportable ignitions in High Fire-Threat Districts on distribution powerlines (compared to the weather-normalized 2018-2020 average)

What Recent Rain Might Mean for Fire Season

While recent rain reduced drought conditions, we remain vigilant in addressing wildfire risk. The 2017 fire season provides an example of similar conditions.

2016 – 2017 California Fire Season Overview



Data per drought.gov, CAL FIRE, and PG&E Meteorology

Some of the measures included in this presentation are contemplated as additional precautionary measures intended to further reduce the risk of wildfires.

Maximize situational awareness



Prevent wildfires



Reduce customer impact



Achieved through our layers of protection:

Operational Mitigations



Enhanced Powerline Safety Settings



Public Safety Power Shutoffs

Resiliency Programs



Overhead System Hardening



Undergrounding Powerlines



Vegetation Management

Situational Awareness



System Inspections



Weather Stations



High-Definition Cameras



Wildfire Mitigation Programs and Goals

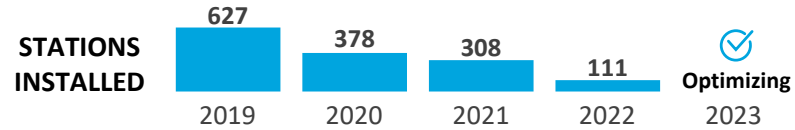


Weather Stations

Better predicting and responding to severe weather threats

PROGRESS BY YEAR

Completed 2023 Goal



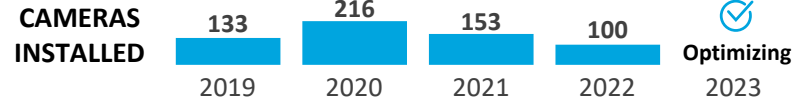
PROGRAM TO DATE

1,424
Stations Installed



High-Definition Cameras

Monitoring and responding to wildfires through increased visibility

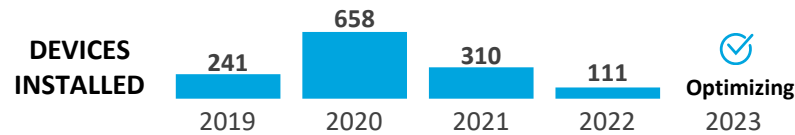


602
Cameras Installed



Sectionalizing Devices and Transmission Switches

Separating the grid into smaller sections and narrowing the scope of Public Safety Power Shutoffs

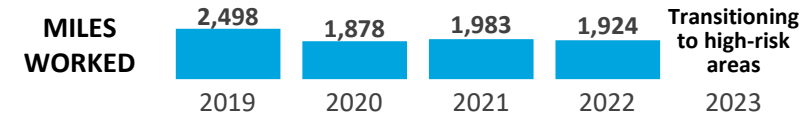


1,320
Devices and Switches Installed

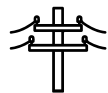


Enhanced Vegetation Management

Addressing vegetation that poses a higher potential for wildfire risk

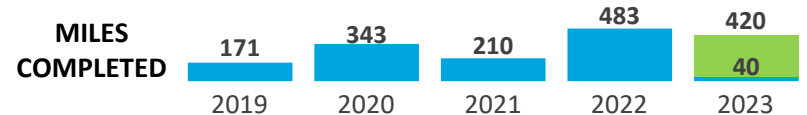


8,283
Miles Worked



System Hardening*

Strengthening our grid by installing stronger poles, covered powerlines and undergrounding

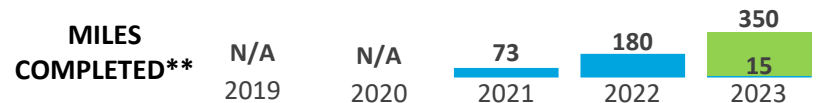


1,247
Miles Completed



Undergrounding Our Lines

Undergrounding powerlines to reduce wildfires caused by equipment

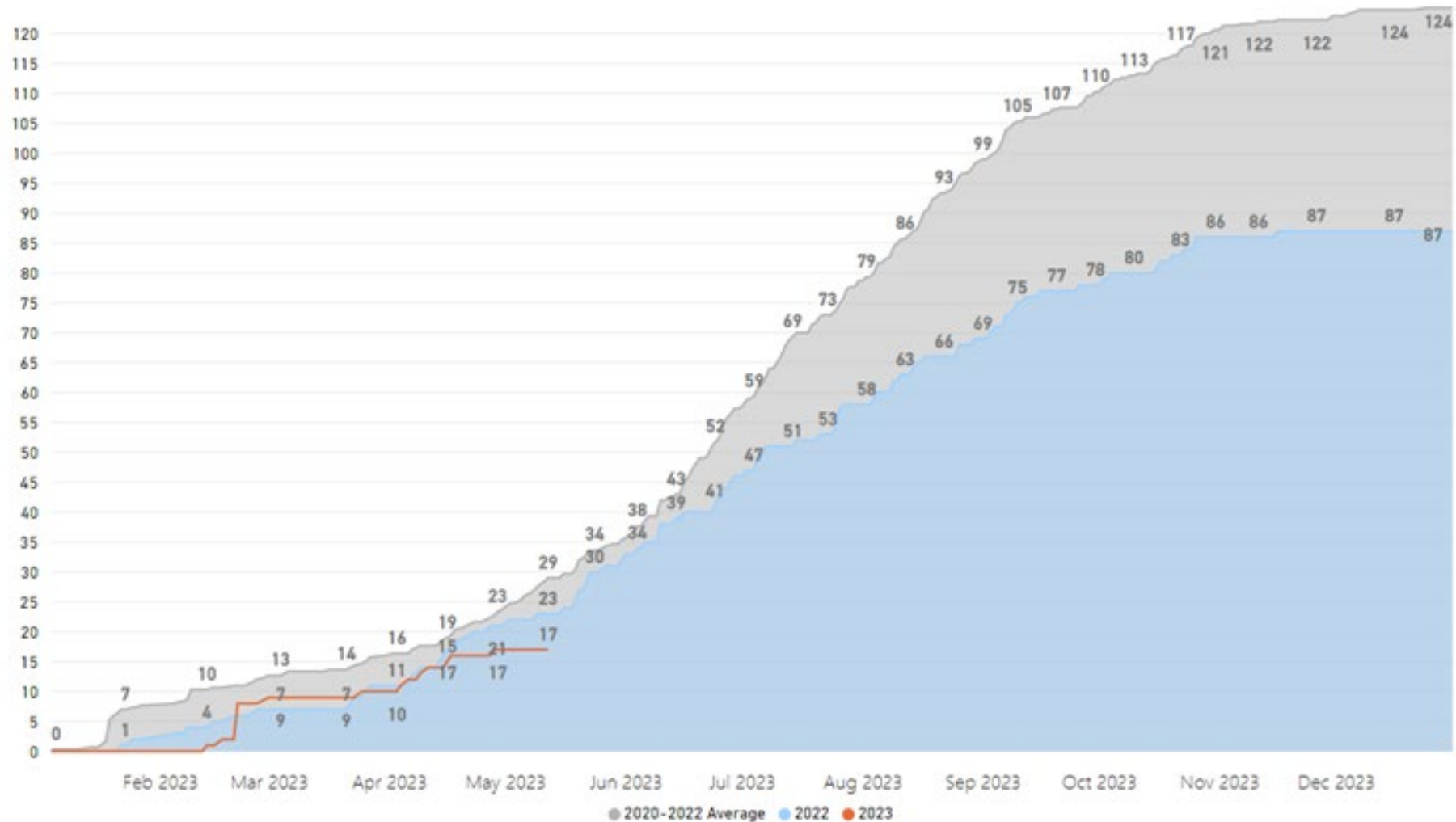


268
Miles Completed



Our Efforts Are Reducing Ignitions

PG&E Reportable Ignitions in High Fire-Threat Districts



Some of the measures included in this presentation are contemplated as additional precautionary measures intended to further reduce the risk of wildfires.

State-of-the-Art Tools to Identify Wildfire Risk



PG&E's Fire Potential Index (FPI)

helps us identify wildfire risk by measuring:

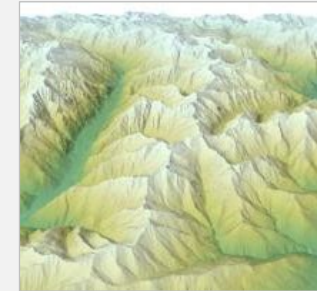
Weather



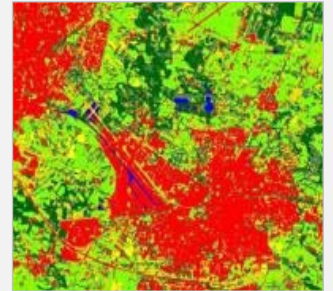
Fuel Moisture



Topography



Fuel Model Type



FPI is calculated each day using:



Over 8 billion data points leveraging advanced artificial intelligence and machine learning models



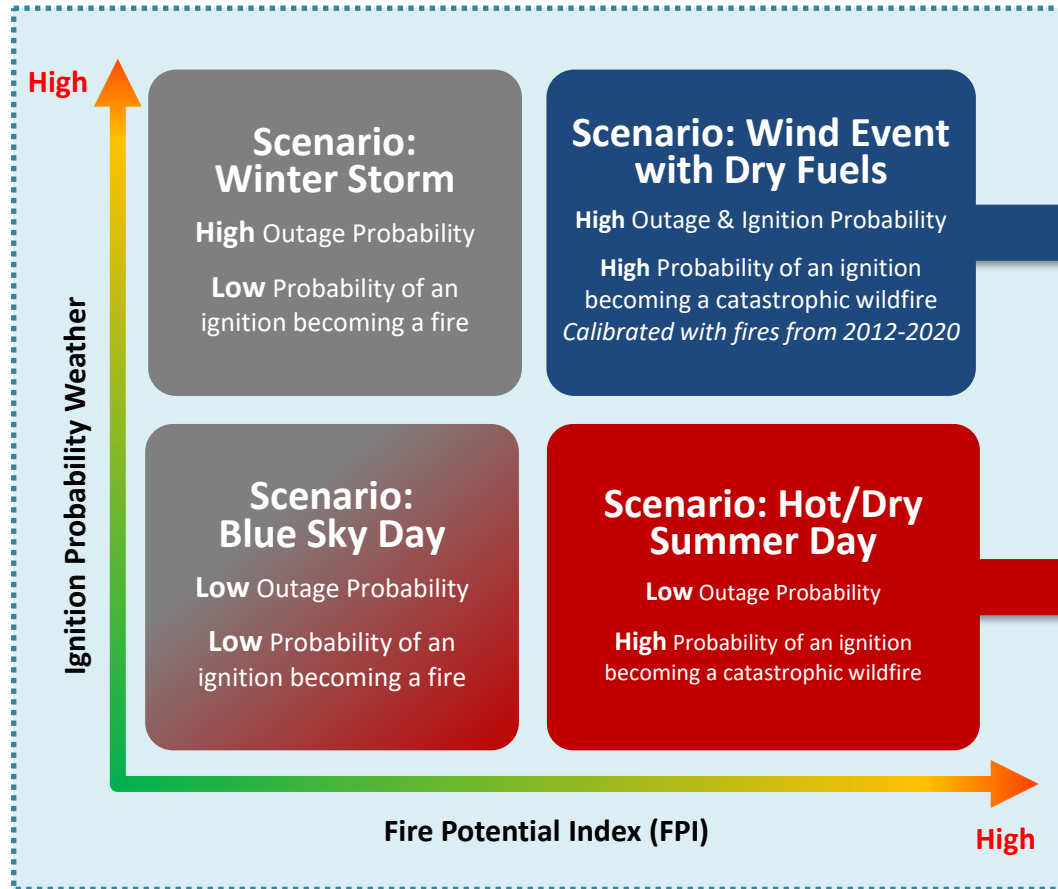
2x2 km grid cells across the entirety of our high-fire risk areas



129-hour look-ahead, rolling forecast

Safety For All Weather Conditions

We use different mitigations for a weather-driven response to forecasted fire danger.



Weather-Driven Response

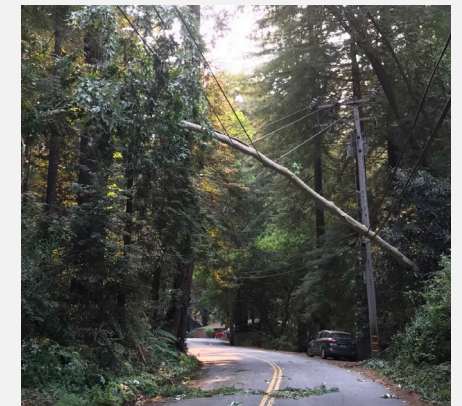
Public Safety Power Shutoff (PSPS)

Turning off power during severe weather to prevent tree branches and debris from contacting energized lines.



Enhanced Powerline Safety Settings (EPSS)

Settings that turn off power within one-tenth of a second if a wildfire threat is detected.

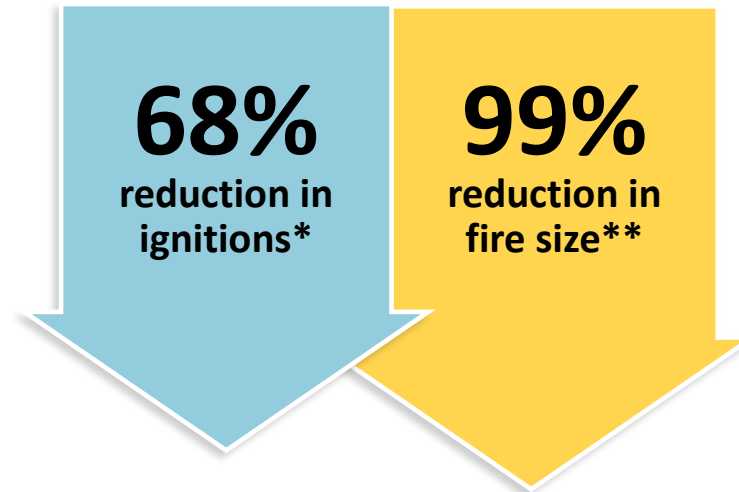


How It Works

Turning off power within one-tenth of a second if a tree branch or other object strikes the line.

Why We Do It

Stopping wildfires before they have a chance to start.



*Data is approximate; *Based on 2022 performance for CPUC-reportable ignitions in HFTD compared to 2018-2020 weather-normalized performance; **Relative to 2018-2020*



SAFETY SETTINGS IN ACTION IN NAPA COUNTY



EPSS Program Expansion and Improvement

By turning 2021 learnings into action, we simultaneously expanded and improved the EPSS Program last year.

Key 2022 improvements based on 2021 learnings:

- Engineered and installed coordinated settings
- Developed and executed circuit-level enablement to maximize risk reduction and reliability
- Refined circuit patrols and better identified fault locations
- Leveraged the Regional Service Model to institute daily outage reviews locally where trends and actions to reduce outages are identified

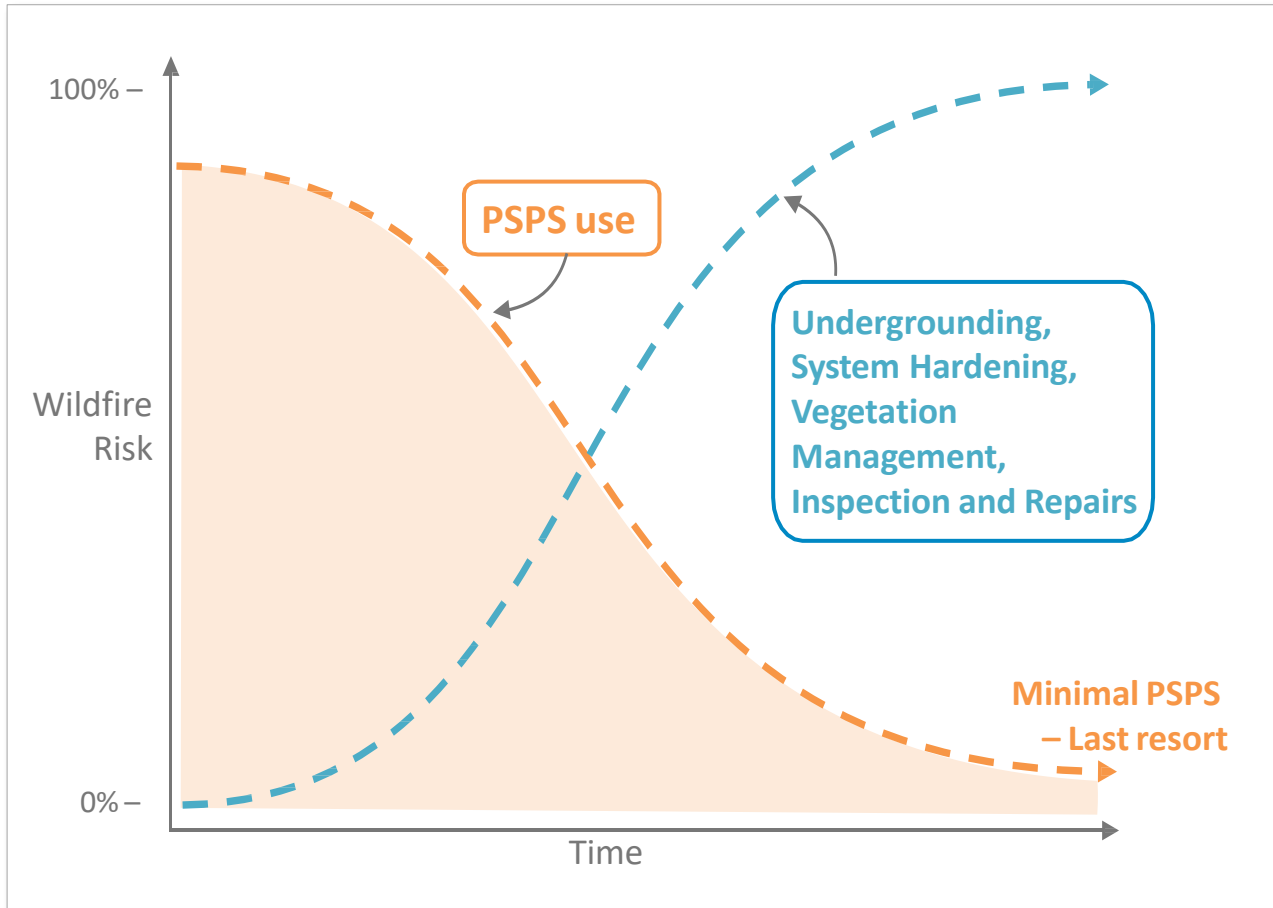
	2021	2022	Improvements
Avg. outage length	~7 hrs	<3 hrs	56% decrease
Avg. customers impacted per outage	~1,100	877	20% decrease
Customers protected	~380,000	~1.82M	374% expansion
Miles protected	45% of HFRA	100% of HFRA	122% increase

Data is approximate



Improving Public Safety Power Shutoffs

As we work to build the electric system of the future, with efforts like undergrounding and system hardening, utilizing Public Safety Power Shutoffs (PSPS) as a measure of last resort will continue to decline.



	2019	2020	2021	2022
PSPS EVENTS	7	6	5	0*
CUSTOMERS IMPACTED	2,014,000	653,000	80,400	-
DAMAGE/ HAZARDS	722	257	442	-
AVERAGE OUTAGE DURATION (HRS)	43	35	31	-
AVERAGE RESTORATION TIME (HRS)	17	10	12	-

Data is approximate

*Due to several factors including weather conditions and ongoing wildfire mitigation work



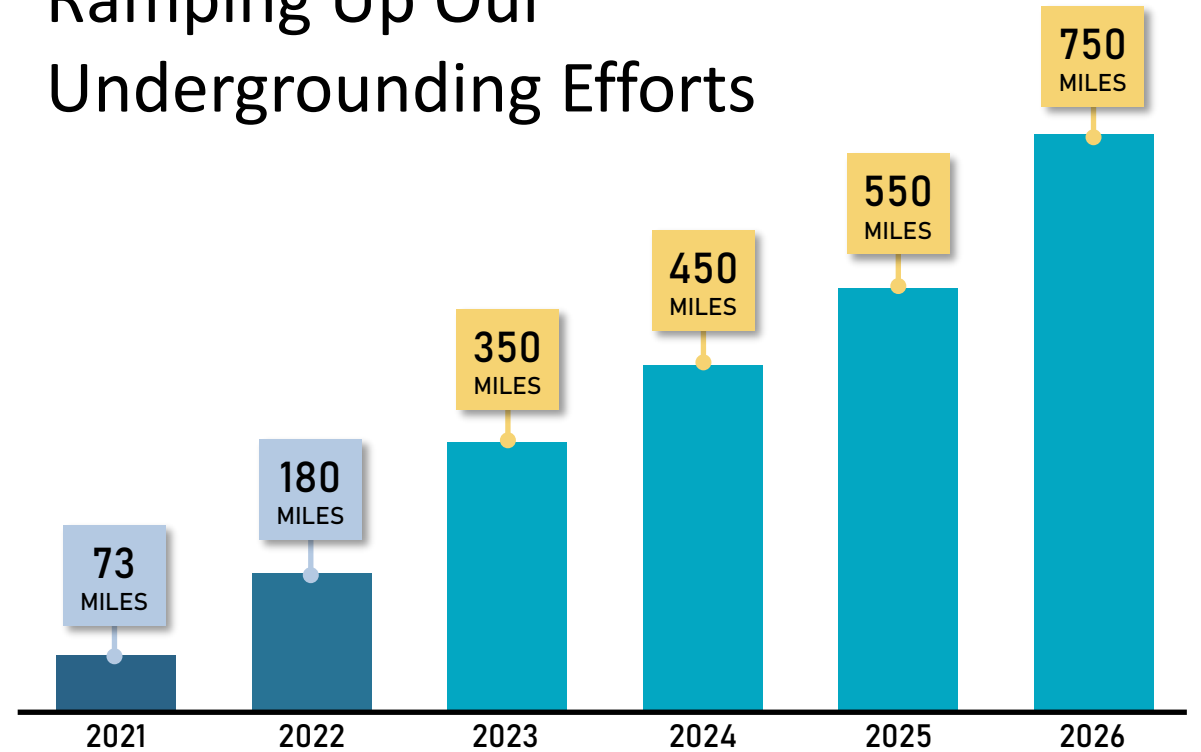
Undergrounding 10,000 Miles of Our Electric System

In 2021, PG&E announced a major new initiative to underground 10,000 miles of power lines in high fire-risk areas.

This is approximately one-third of the miles PG&E has in high fire-risk areas.

This commitment represents the largest effort in the U.S. to underground power lines as a wildfire risk reduction measure.

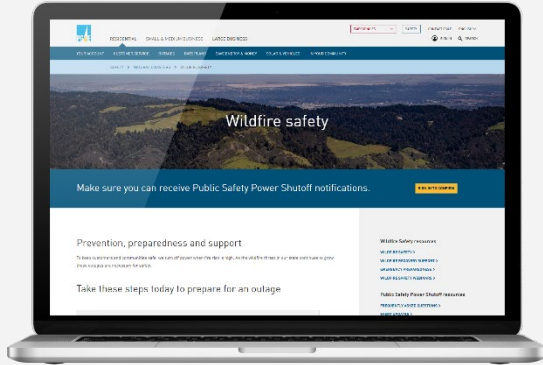
Ramping Up Our Undergrounding Efforts



Pending California Public Utilities Commission (CPUC) and California Office of Energy Infrastructure Safety (OEIS) approval.



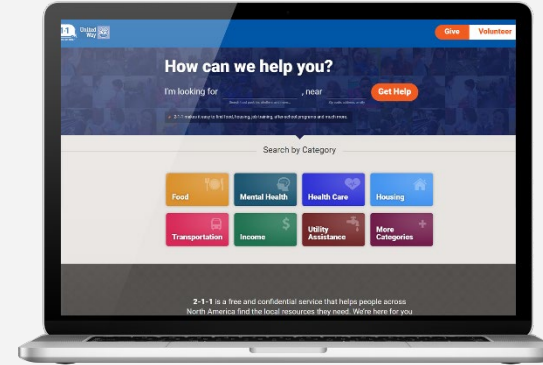
Customer Resources



Wildfire Safety


Information on wildfire prevention efforts

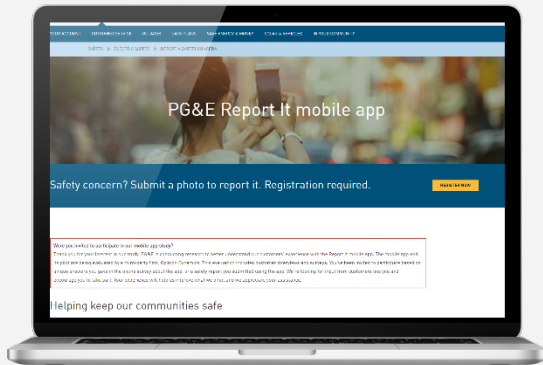
 pge.com/wildfiresafety



211

24-7 free and confidential support and resources via calls or texts to 211

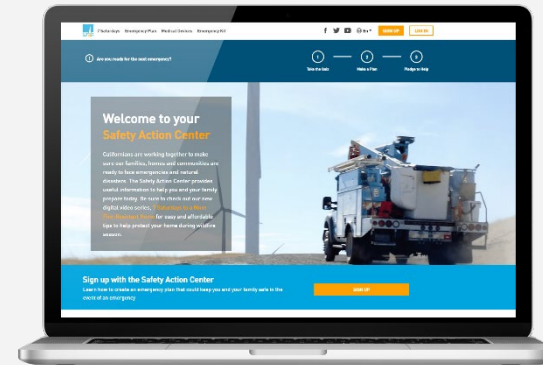
 211ca.org



Report It App

Submit photos of non-emergency potential safety concerns

 pge.com/reportit



Safety Action Center

Create an emergency safety plan to keep you and your family safe

 safetyactioncenter.pge.com

Dedicated wildfire safety contacts: Hotline: 1-866-743-6589 | Email: wildfiresafety@pge.com

Some of the measures included in this presentation are contemplated as additional precautionary measures intended to further reduce the risk of wildfires.

Thank You



Community Wildfire Planning Center

Molly Mowery



Trainings and Toolkits to Support WUI Planning

Image: CAL FIRE (Carr Fire)



Wildfire Mitigation Advisory Committee
Monthly Meeting I May 16, 2023

Funding for these projects is provided by the California Department of Forestry and Fire Protection as part of the California Climate Investments Program

About Us



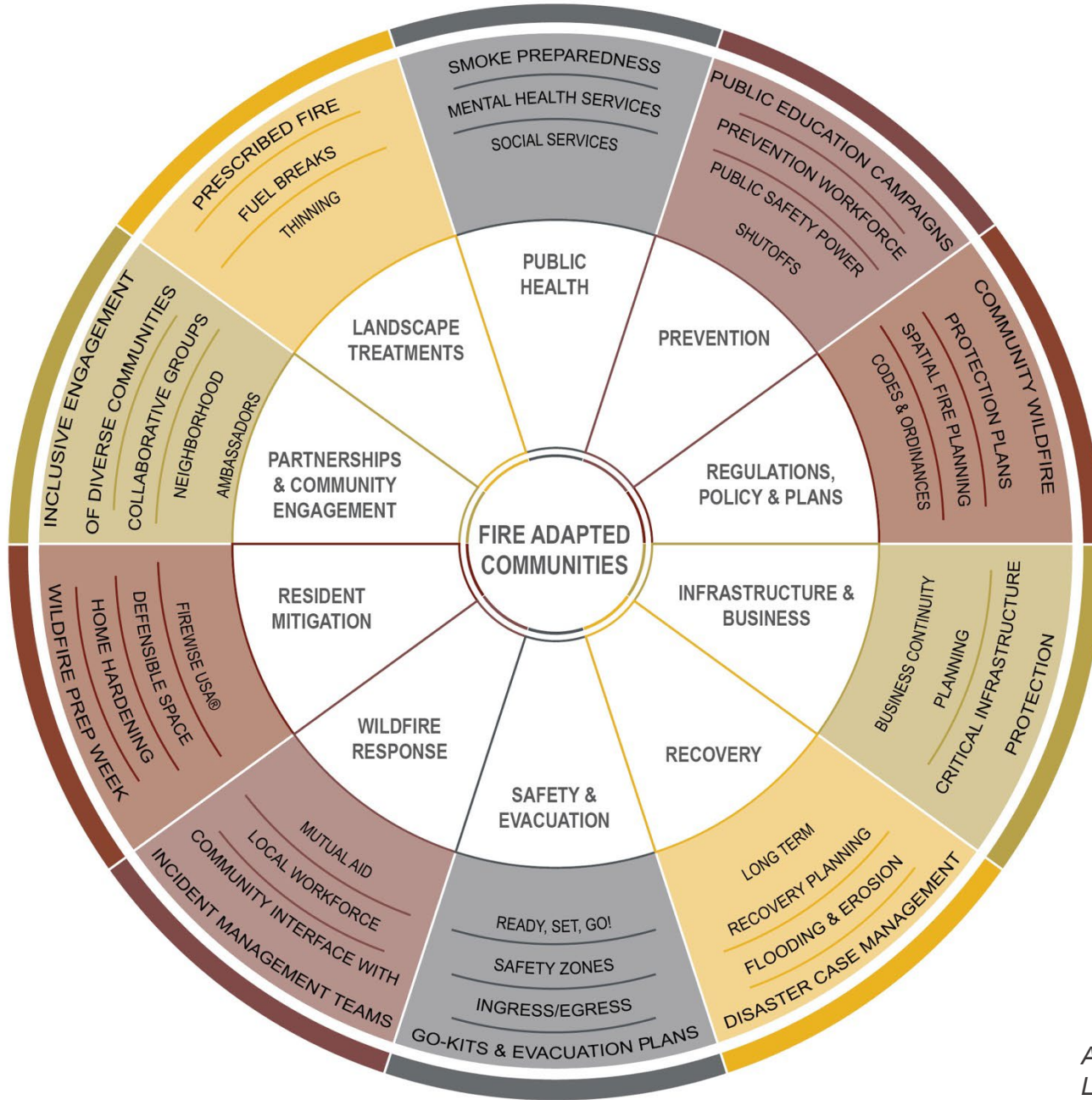
- Community Wildfire Planning Center
- 501(c)3 non-profit organization
- Funded through grants, agreements, and services
- Focused on wildland-urban interface (WUI) risk reduction and resiliency planning



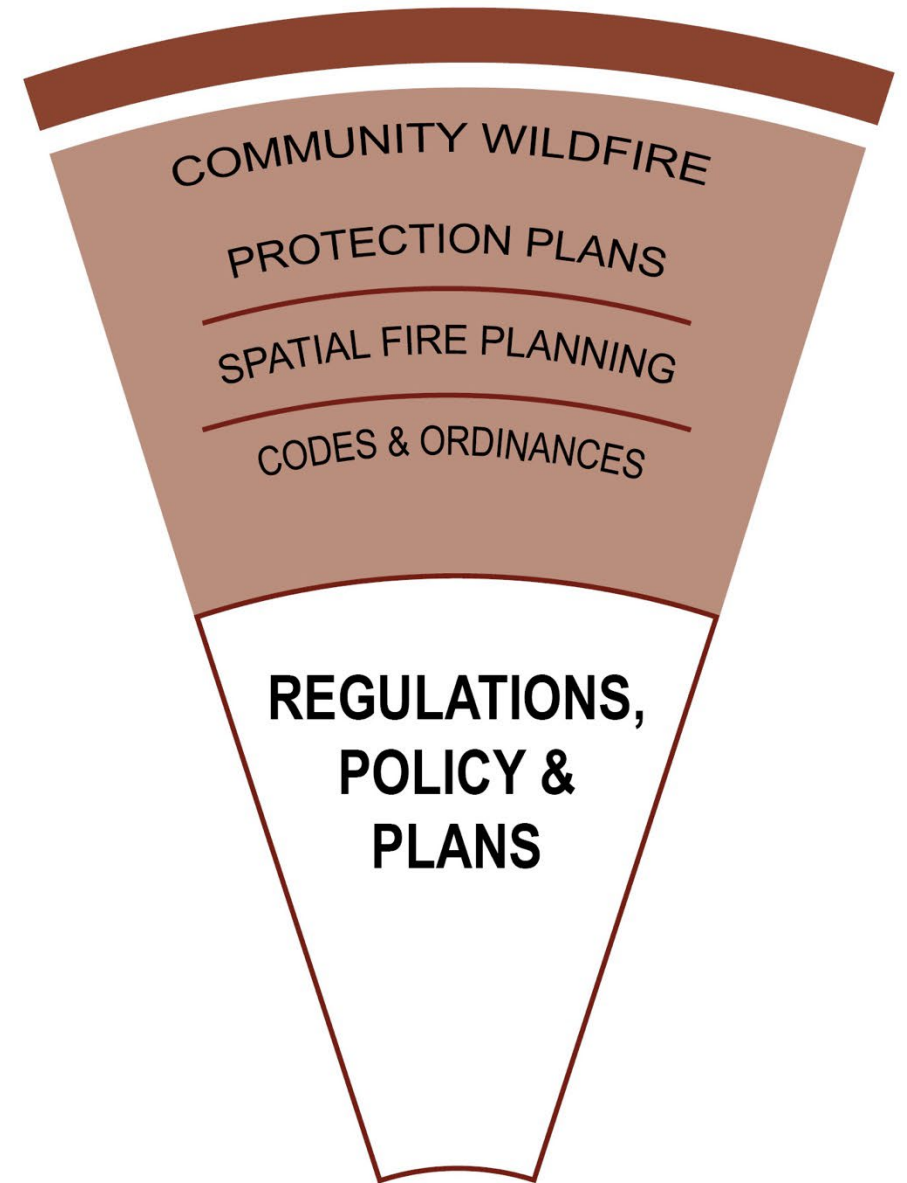
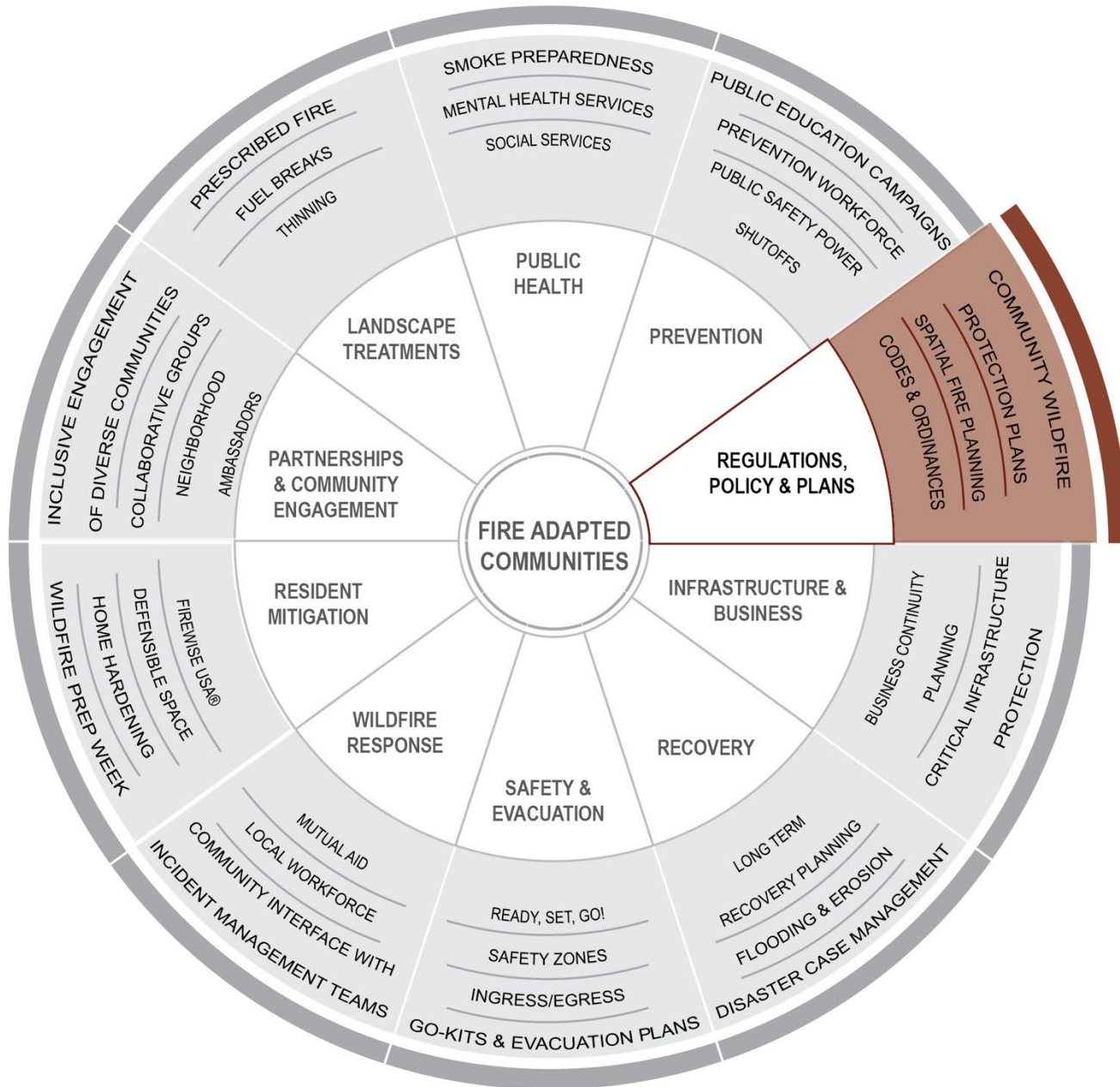
Molly Mowery, AICP
Executive Director



Kelly Johnston, RPF
Operations Manager



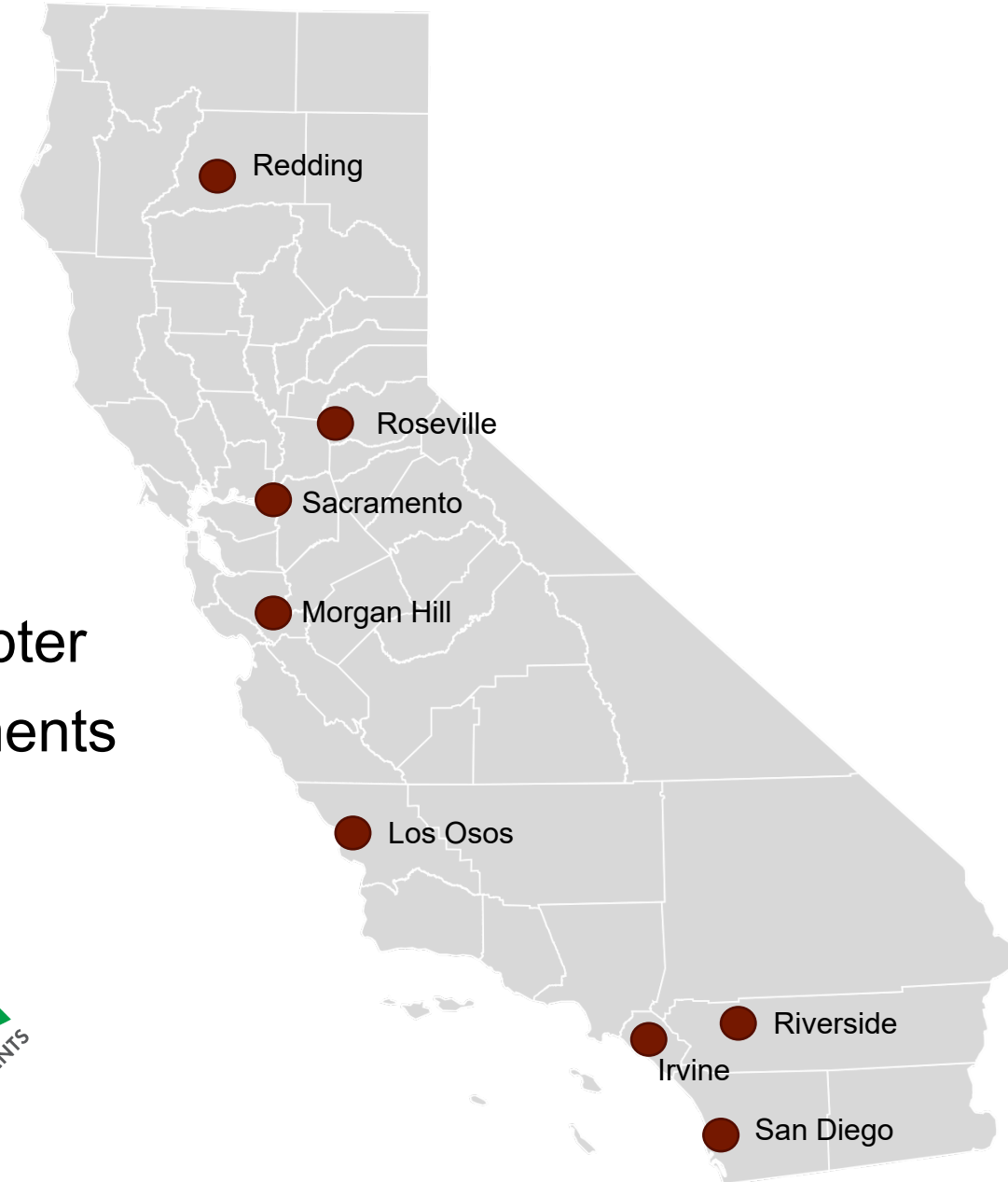
Adapted from the Fire Adapted Communities Learning Network FAC graphic



Trainings

Introduction to Land Use Planning for Wildfires in California Trainings

- ▶ Initiated by state legislation
- ▶ Developed by CAL FIRE & CWPC
- ▶ Co-sponsored by APA California Chapter
- ▶ Funded by California Climate Investments



Training Objectives

▶ Educate planners, fire officials, building officials and others:

- Key wildfire concepts
- State requirements for planning in the WUI
- Best practices, resources, and funding opportunities

▶ Exchange planning and wildfire perspectives



Image: CWPC

Content Overview

“Think like a firefighter”

- Wildland-urban interface
- Wildfire hazard and risk
- Fire hazard severity zones
- Responsibility areas
- Wildfire susceptibilities



Image: CWPC / CAL FIRE (top)

Content Overview

“Think like a planner”

- Brief history of WUI planning
- State-level requirements for plans and codes
- Resources and best practices



Image: Butte County / Dan Breedon

Content Overview

Plans

- **General Plan**
- **Master Plan, Community Plan, Specific Plan, Neighborhood Plan**
- **Local Hazard Mitigation Plan**
- **Community Wildfire Protection Plan**
- Resiliency and Post-Disaster Recovery Plan
- Wildfire Mitigation and Safety Plan
- Open Space and Recreational Plan
- Climate Mitigation and Adaptation Plan

Regulations

- **Building Code**
- **Fire Code**
- **Fire Safe Regulations**
- **Subdivision Ordinance**
- **Zoning Ordinance**
- **Landscaping, Defensible Space & Hazard Abatement Ordinances**
- Post-Disaster Recovery Ordinance

Content Overview

Plans

- General Plan
- Master Plan, Community Plan, Specific Plan, Neighborhood Plan
- Local Hazard Mitigation Plan
- Community Wildfire Protection Plan
- Resiliency and Post-Disaster Recovery Plan
- Wildfire Mitigation and Safety Plan
- Open Space and Recreational Plan
- Climate Mitigation and Adaptation Plan

Regulations

- Building Code
- Fire Code
- Fire Safe Regulations
- Subdivision Ordinance
- Zoning Ordinance
- Landscaping, Defensible Space & Hazard Abatement Ordinances
- Post-Disaster Recovery Ordinance

Fire Hazard Planning Technical Advisory

GENERAL PLAN TECHNICAL ADVICE SERIES

2022 Update
Finalized - August 2022



WILDLAND-URBAN INTERFACE PLANNING GUIDE

Examples and Best Practices for
California Communities

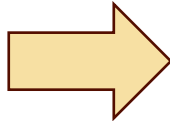
March 2022



Content Overview

General Plan Safety Element

SB 1241 (2012)



SRA & VHFHSZ
areas must
address wildfire in
Safety Element



General Plan Safety Element Assessment

Jurisdiction:	Notes:	CAL FIRE Unit:	Date Received:
County:	LUPP Reviewer:	UNIT CONTACT:	Date Reviewed:

BACKGROUND INFORMATION SUMMARY

The safety element must contain specific background information about fire hazards in each jurisdiction.
Instructions for this table: Indicate whether the safety element includes the specified information. If YES, indicate in the comments where that information can be found; if NO, provide recommendations to the jurisdiction regarding how best to include that information in their revised safety element.

Required Information	Yes or No	Comments and Recommendations
Are Fire Hazard Severity Zones Identified? <i>CAL FIRE or Locally Adopted Maps</i>	Yes	Sample of required formatting: SE Policy #, p.#. SE Policy #, p.#. "If the criterion is met by a combination of policies, add them as well" LHMP Figure #, p.#. Figure title. See also: CWPP Program #, p.#. If referencing more than two policies/programs
Is historical data on wildfires or a reference to where the data can be found, and information about wildfire hazard areas that may be available from the United States Geological Survey, included?	Yes	
Has the general location and distribution of existing and planned uses of land in very high fire hazard severity zones (VHFHSZs) and in state responsibility areas (SRAs), including structures, roads, utilities, and essential public facilities, been identified?	Yes	
Have local, state, and federal agencies with responsibility for fire protection, including special districts and local offices of emergency services, been identified?	Yes	
Are other fire protection plans, such as Community Wildfire Protection Plans, Local Hazard Mitigation Plans, CAL FIRE Unit or Contract County Fire Plans, referenced or incorporated into the Safety Element?	Yes	

Attendee Reviews...



“The education and perspective I gained from the workshop has been instrumental in my growth as a planner.”

“Really appreciated the key concepts / fire basics because it provided the “why” on why land use planning is so important.”

“It has given me a much better understanding of the planning environment and regulations in California.”

Training Next Steps

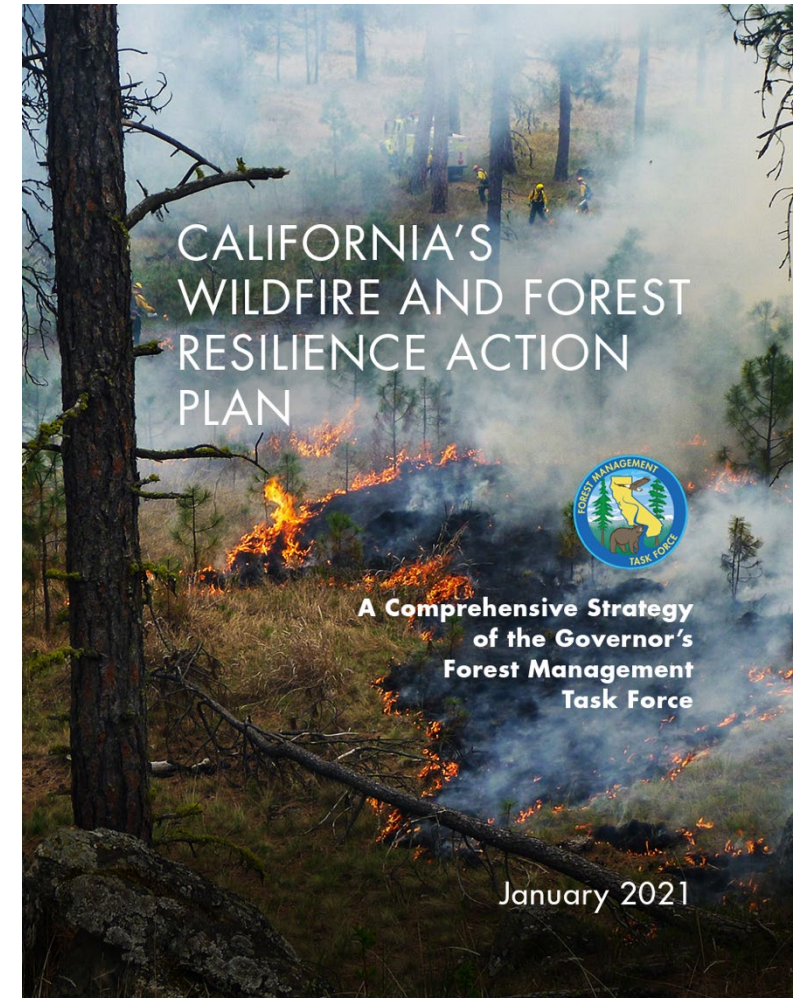
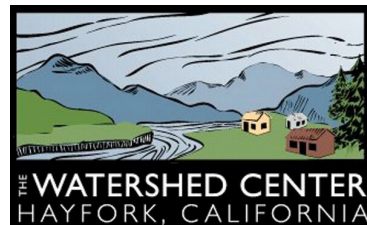
- Final training May 17 (Sacramento)
- Phase 2 trainings being planned for 2024-25



Toolkits

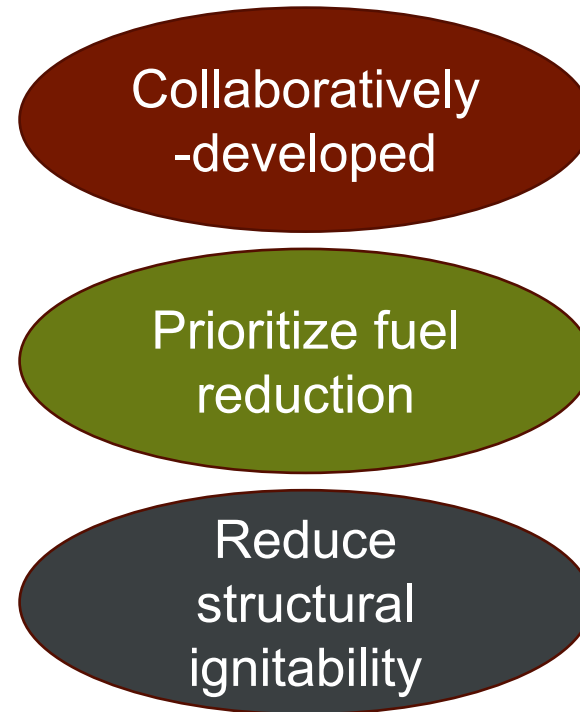
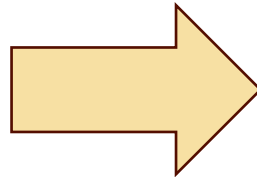
Community Wildfire Protection Plan (CWPP) Toolkit

- ▶ Implements Action Plan Task 2.6
- ▶ Aligns with legislation (AB 9)
- ▶ Multi-disciplinary team
- ▶ Funded by California Climate Investments



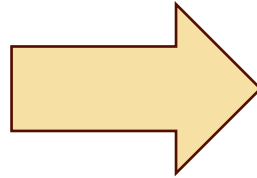
What are CWPPs?

Voluntary plans established by the Healthy Forests and Restoration Act (2003) with **three minimum requirements**

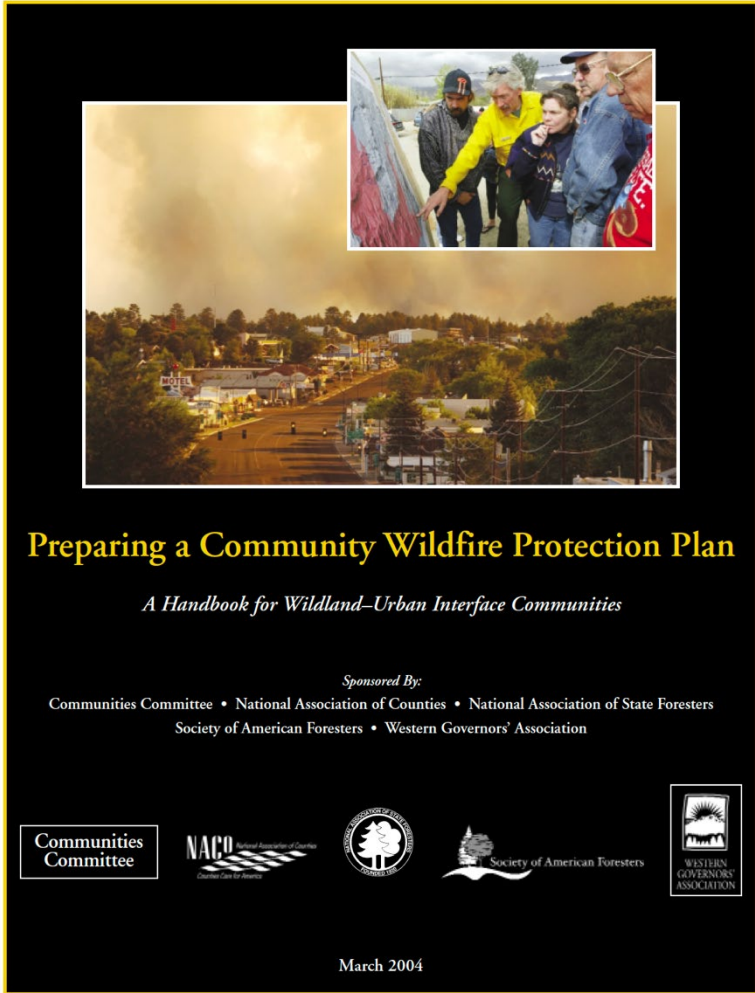


What are CWPPs?

Voluntary plans established by the Healthy Forests and Restoration Act (2003) with **three minimum requirements**



- Collaboratively developed
- Prioritize fuel reduction
- Reduce structural ignitability

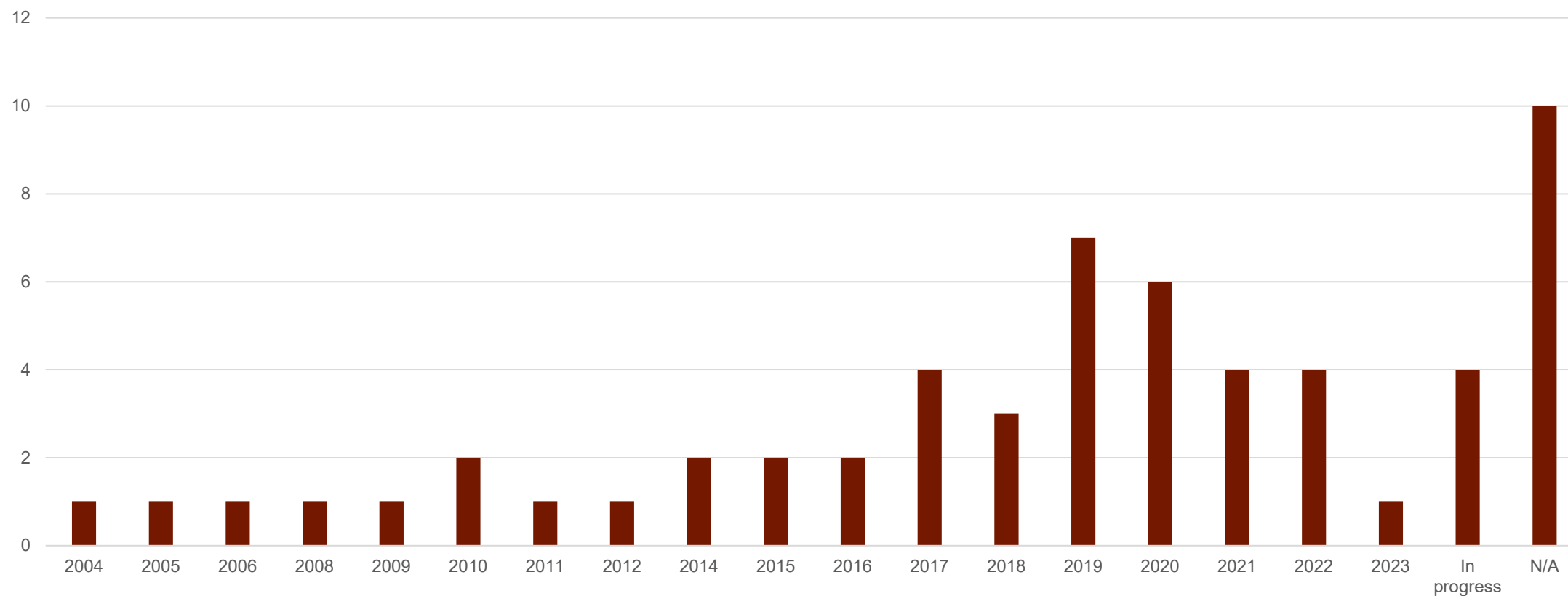


CWPPs in California

- Different scales, formats, lead agencies and collaborators
- 44 of 58 counties have their own CWPP
 - +4 in progress
- 33 of 188 LRAs have their own (dedicated) CWPP
 - +17 in progress
- Adoption / update years vary

CWPPs in California

County CWPPs by Date



Opportunities



Increased funding

Plan alignment

Coordination and collaboration

Multi-scalar, multi-disciplinary

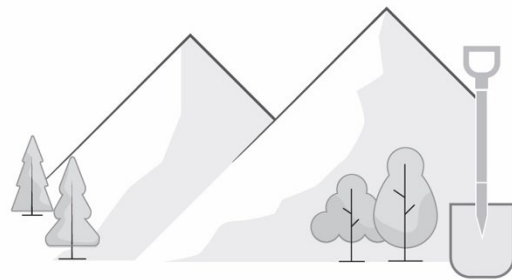
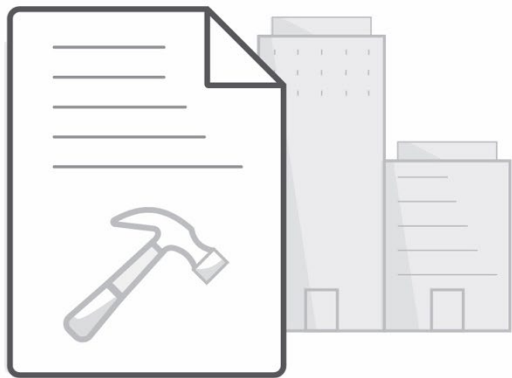
Urgency of wildfires

Toolkit Elements



Toolkit Next Steps

- Listening Sessions
- Coordination with CAL FIRE on website
- Toolkit Development



Toolkit Feedback



- Do you have CWPP best practice examples?
 - Development
 - Implementation
 - Public outreach
 - Stakeholder collaboration
 - Technology integration
- What CWPP information and resources would be helpful to provide for communities?

Questions / Contact

Molly Mowery: molly@communitywildfire.org

Kelly Johnston: kelly@communitywildfire.org



www.communitywildfire.org

Roundtable / Public Comment

- ▶ Roundtable
- ▶ Topic Suggestions for Next Meetings
 - <https://forms.gle/Wefg6YnrnUGYS8ua9>
- ▶ Public Comment



Next Meeting Information

June 20, 2023

CNRA Building, 2-221(A-C) Conference Room
715 P St, Sacramento, CA

- **CAL FIRE - Office of the State Fire Marshal:**
 - Risk Modeling Workgroup
 - Jim McDougald
 - LUP Program Overview
 - Carmel Barnhart
- **Office of Energy Infrastructure Safety:**
 - Wildfire Plan Overview
 - Caroline Thomas Jacobs



Meeting Adjournment (Motion Required)

- ▶ Copies of the written materials have been posted on the Office of the State Fire Marshal web site at <https://osfm.fire.ca.gov/>.
- ▶ For information concerning the Advisory Committee Meeting, please contact Kara Garrett at (916) 201-5539 or Kara.Garrett@fire.ca.gov.
- ▶ NOTE: Items designated for information are appropriate for committee action if the committee chooses to act. The agenda order is tentative and subject to change. Agenda items may be taken out of order to facilitate the effective transaction of business. The Committee may not discuss or act on any matter raised during the public forum period, except to decide whether to place the matter on the notice and agenda of a future committee meeting.

