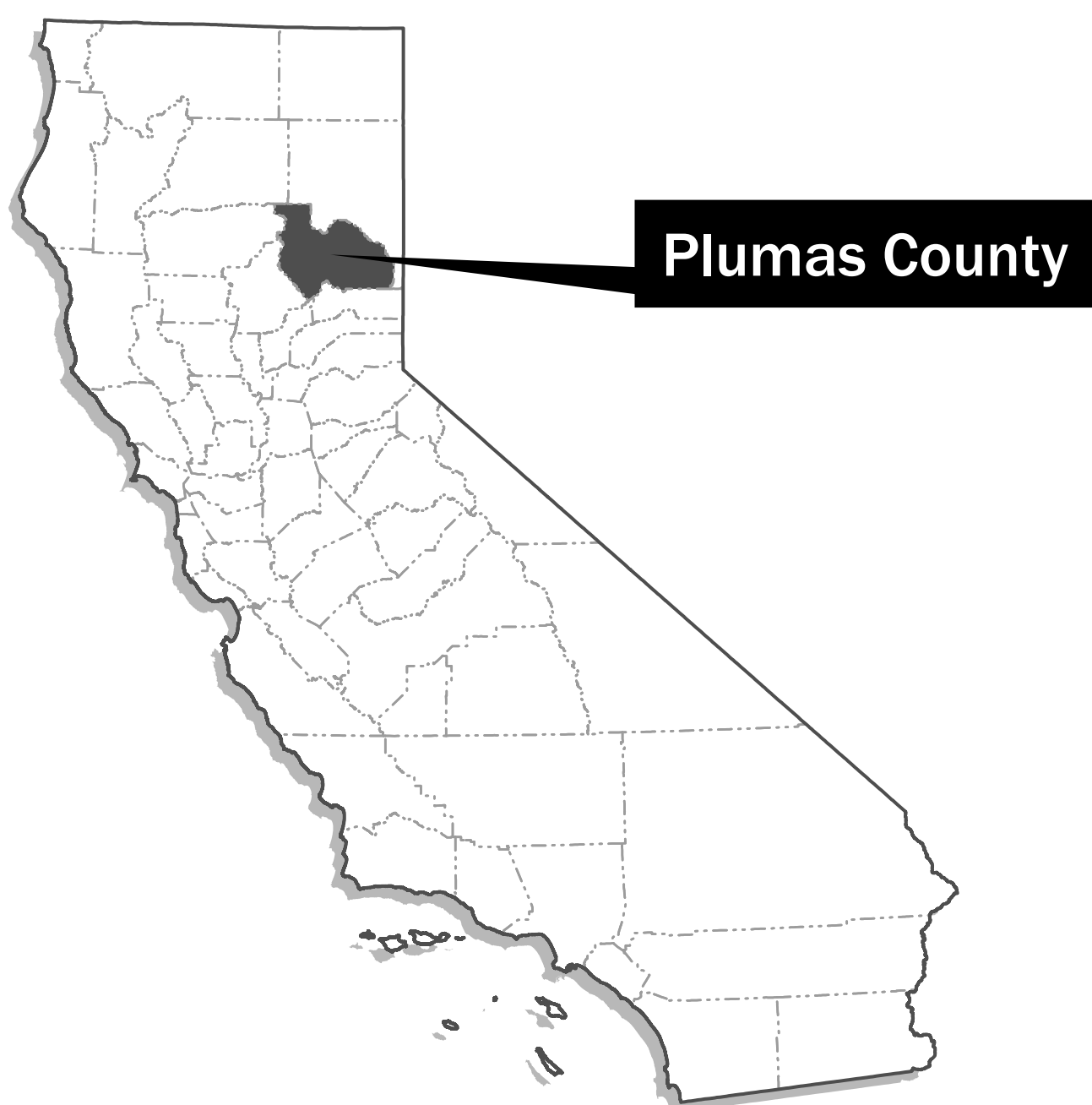
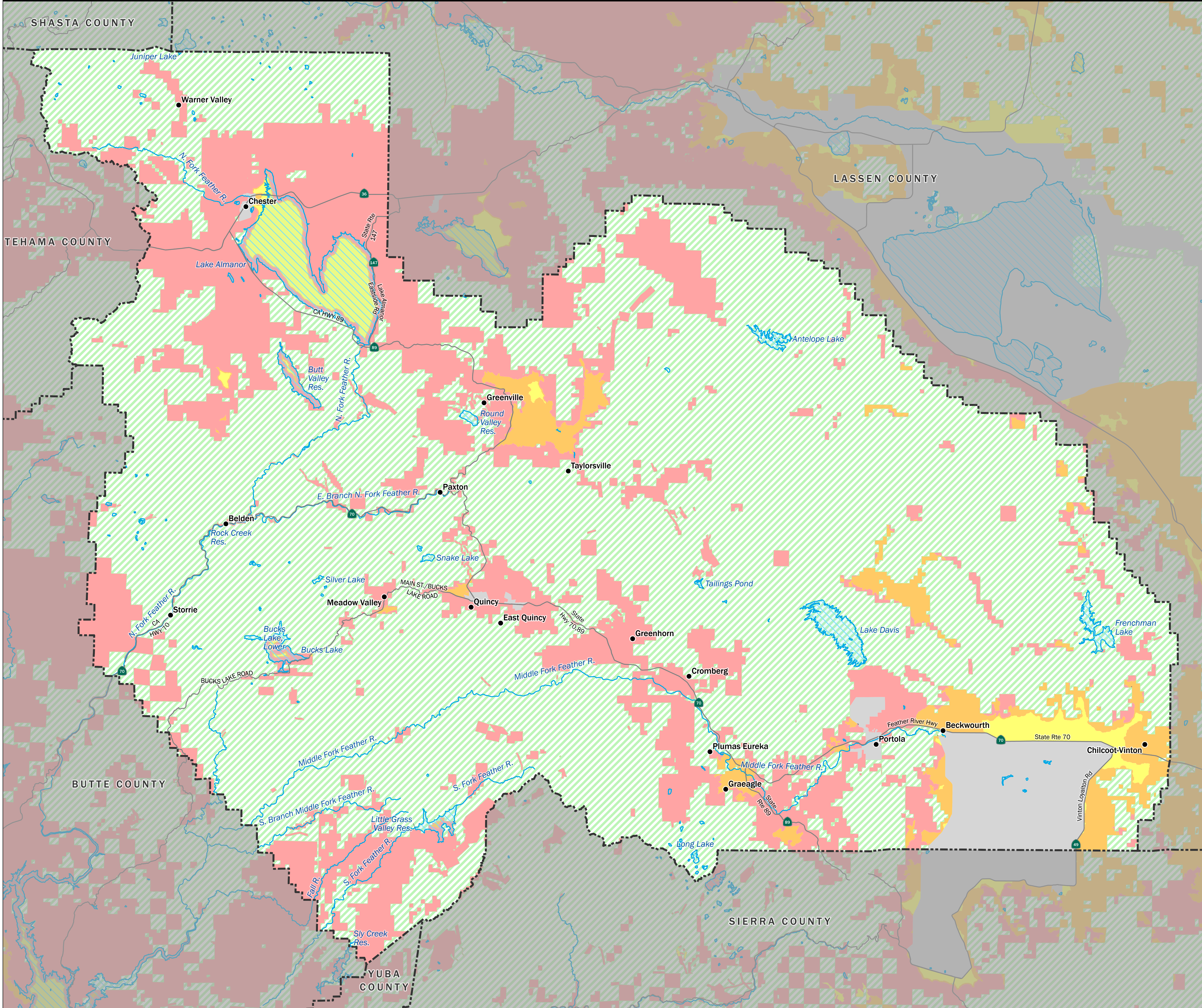


State Responsibility Area Fire Hazard Severity Zones

November 21, 2022



Fire Hazard Severity Zones in State Responsibility Area (SRA)

■	Very High	354,632 Acres
■	High	52,632 Acres
■	Moderate	30,238 Acres

Public Resources Code 4201-4204 directs the California Department of Forestry and Fire Protection (CAL FIRE) to map fire hazard within State Responsibility Areas (SRA) based on fuel loading, slope, fire weather, and other relevant factors present, including areas where winds have been identified by the department as a major cause of wildfire spread. These zones, referred to as Fire Hazard Severity Zones (FHSZ), classify a wildland zone as Moderate, High, or Very High fire hazard based on the average hazard across the area included in the zone.

Fire Protection Responsibility Areas (non-SRA)

▨	Federal Responsibility Area (FRA)
■	Local Responsibility Area (LRA)

Access PDF versions of the maps at <https://osfm.fire.ca.gov/fhsz-maps>. For more information, please visit the Frequently Asked Questions document for the 2023 Fire Hazard Severity Zones at <https://osfm.fire.ca.gov/fhsz> or scan the QR code at right. If you have further questions, please call 916-633-7655 or email FHSZcomments@fire.ca.gov.

0 5 10 15 Miles

0 5 10 15 20 25 Km

Projection: NAD 83 California Teale Albers
Scale: 1:140,000 at 36" x 48"



Scan or click the QR code for more information and to visit the interactive FHSZ viewer.