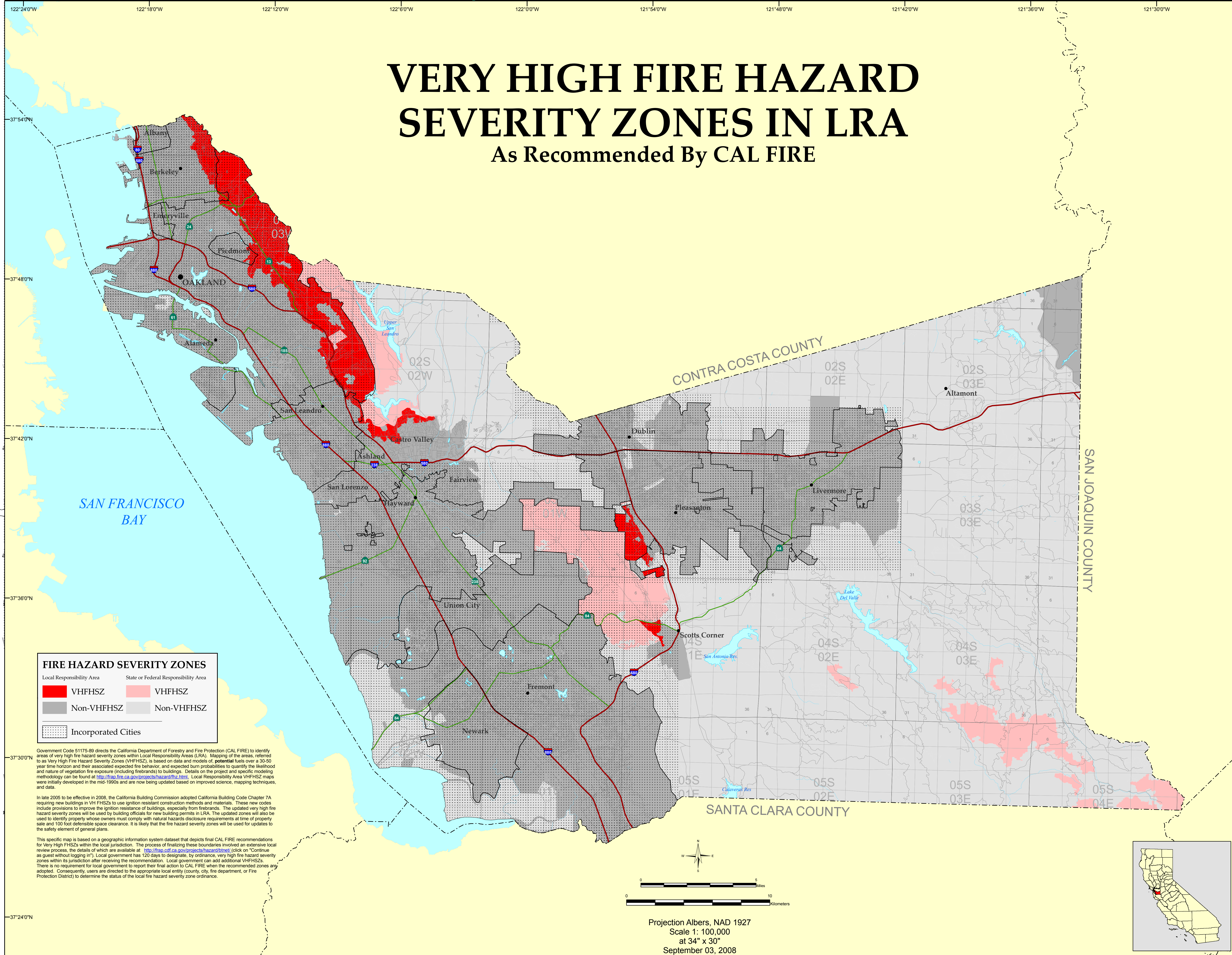


VERY HIGH FIRE HAZARD SEVERITY ZONES IN LRA As Recommended By CAL FIRE



The State of California and the Department of Forestry and Fire Protection make no representations or warranties regarding the accuracy of data or maps. Neither the State nor the Department shall be liable under any circumstances for any direct, special, incidental, or consequential damages with respect to any claim by any user or third party on account of, or arising from, the use of data or maps.

Obtain FRAP maps, data, metadata and publications on the Internet at <http://frap.cdf.ca.gov>
For more information, contact CAL FIRE-FRAP, PO Box 944246, Sacramento, CA 94244-2460, (916) 327-3939.

Arnold Schwarzenegger, Governor,
State of California
Mike Chrisman, Secretary for Resources,
The Resources Agency
Ruben Grijalva, Director,
Department of Forestry and Fire Protection

MAP ID: FHSZL_MAP
DATA SOURCES
CAL FIRE Fire Hazard Severity Zones (FHSZL06_3)
CAL FIRE State Responsibility Areas (SRA05_5)
CAL FIRE Incorporated Cities (Incorp07_3)
PLSS (1:100,000 USGS, Land Grants with CAL FIRE grid)