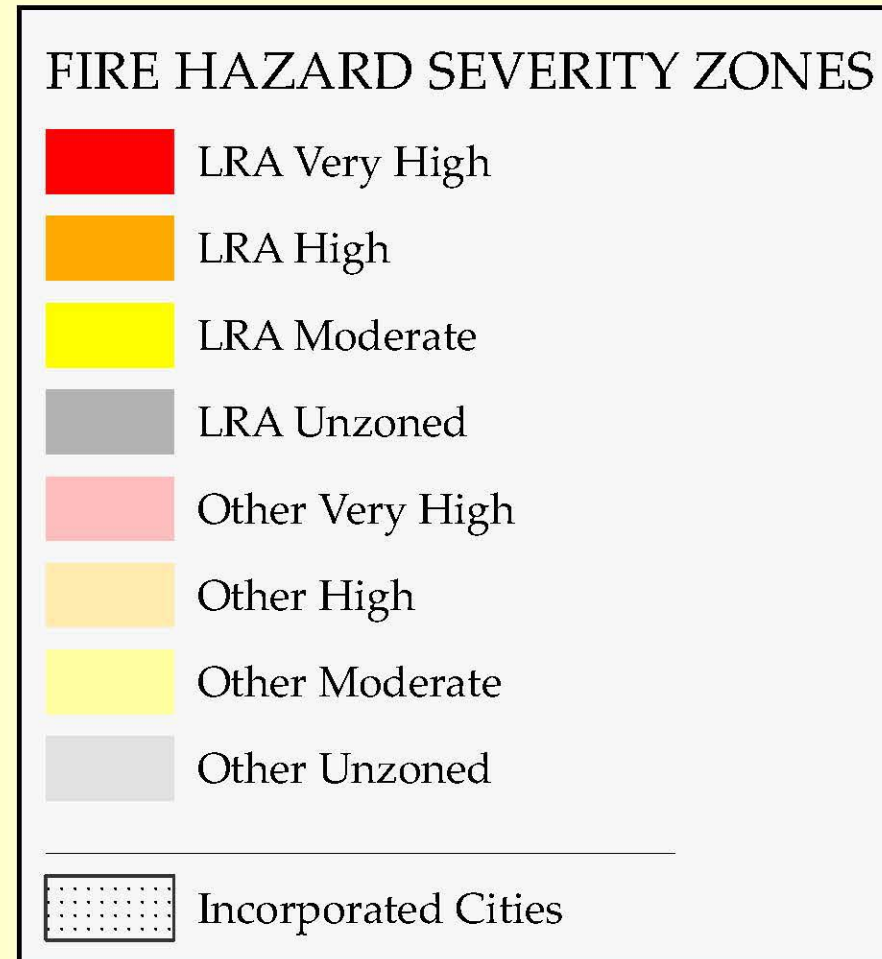


## DRAFT FIRE HAZARD SEVERITY ZONES IN LRA



Government Code 51175-89 direct the California Department of Forestry and Fire Protection (CAL FIRE) to map areas of very high fire hazard within Local Responsibility Areas (LRA). Mapping of the areas, referred to as Very High Fire Hazard Severity Zones (VHFHSZ), is based on relevant factors such as fuels, terrain, and weather. VHFHSZ maps were initially developed in the mid-1990s but are now being updated based on improved science, mapping techniques, and data.

The California Building Commission adopted the Wildland-Urban Interface codes in late 2005 to be effective in 2008. These new codes include provisions to improve the ignition resistance of buildings, especially from firebrands. The updated fire hazard severity zones will be used by building officials to determine appropriate construction materials for new buildings in the Wildland-Urban Interface. The updated zones will also be used by property owners to comply with natural hazards disclosure requirements at time of property sale and 100 foot defensible space clearance. It is likely that the fire hazard severity zones will be used for updates to the safety element of general plans.

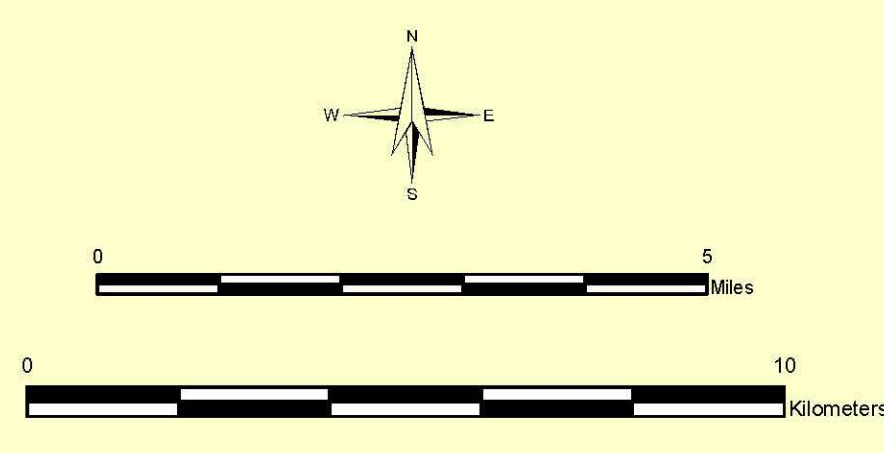
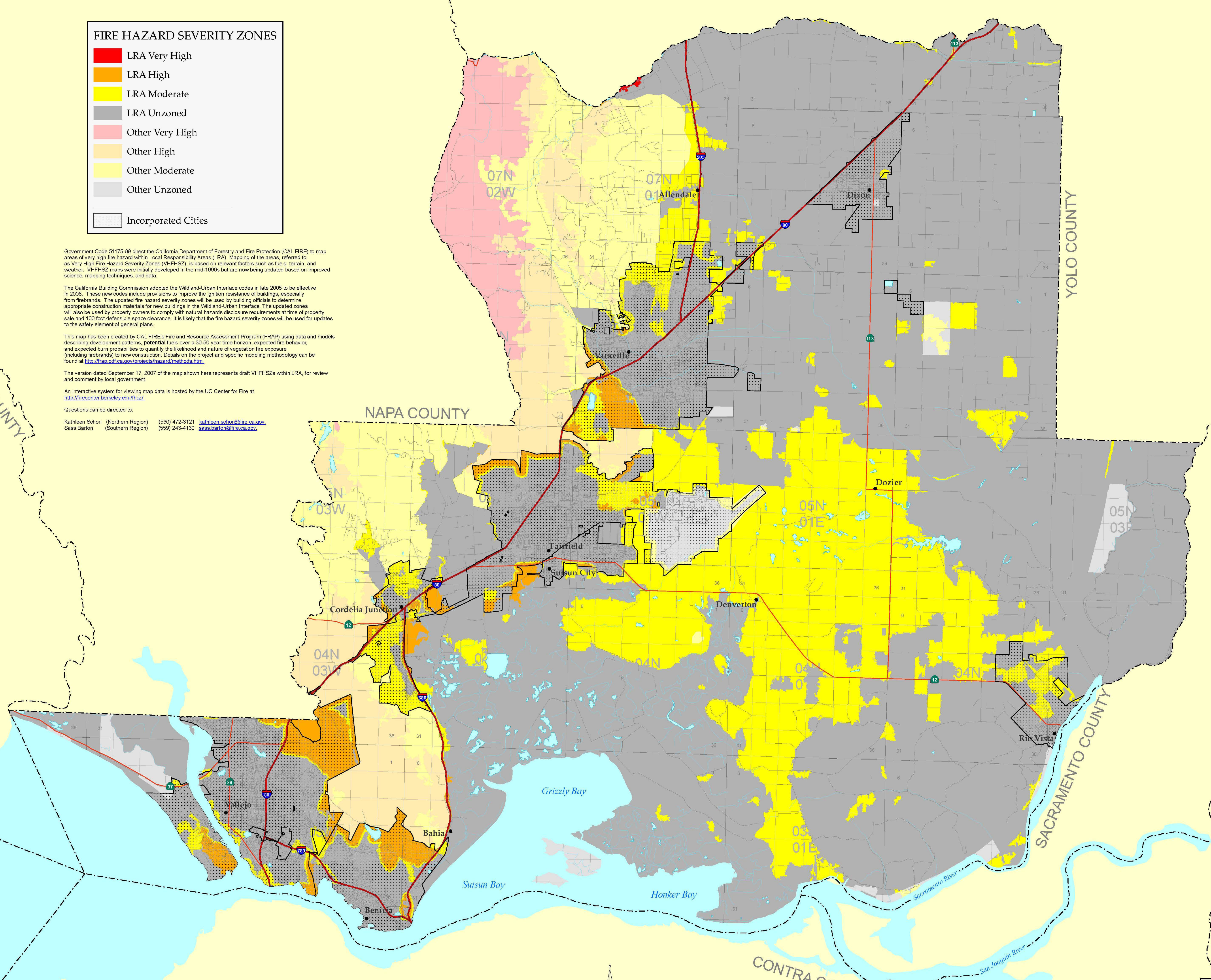
This map has been created by CAL FIRE's Fire and Resource Assessment Program (FRAP) using data and models describing development patterns, potential fuels over a 30-50 year time horizon, expected fire behavior, and expected burn probabilities to quantify the likelihood and nature of vegetation fire exposure (including firebrands) to new construction. Details on the project and specific modeling methodology can be found at <http://frap.cdf.ca.gov/projects/hazards/methods.htm>.

The version dated September 17, 2007 of the map shown here represents draft VHFHSZs within LRA, for review and comment by local government.

An interactive system for viewing map data is hosted by the UC Center for Fire at <http://firecenter.berkeley.edu/fhsz/>.

Questions can be directed to:

Kathleen Schori (Northern Region) (530) 472-3121 [kathleen.schori@fire.ca.gov](mailto:kathleen.schori@fire.ca.gov)  
Sara Barton (Southern Region) (959) 243-4130 [sara.barton@fire.ca.gov](mailto:sara.barton@fire.ca.gov)



Projection Albers, NAD 1927  
Scale 1: 100,000  
at 34" x 33.5"  
October 03, 2007



The State of California and the Department of Forestry and Fire Protection make no representations or warranties regarding the accuracy of data or maps. Neither the State nor the Department shall be liable under any circumstances for any direct, special, incidental, or consequential damages with respect to any claim by any user or third party on account of, or arising from, the use of data or maps.

Obtain FRAP maps, data, metadata and publications on the Internet at <http://frap.cdf.ca.gov>  
For more information, contact CAL FIRE-FRAP, PO Box 944246, Sacramento, CA 94244-2460, (916) 327-3939.

Arnold Schwarzenegger, Governor,  
State of California  
Mike Chrisman, Secretary for Resources,  
The Resources Agency  
Ruben Grijalva, Director,  
Department of Forestry and Fire Protection

MAP ID: FHSZL06\_1\_MAP  
DATA SOURCES  
CAL FIRE Fire Hazard Severity Zones (FHSZL06\_1)  
CAL FIRE State Responsibility Areas (SRA05\_4)  
CAL FIRE Incorporated Cities (Incorp07\_2)  
PLSS (1:100,000 USGS, Land Grants with CAL FIRE grid)