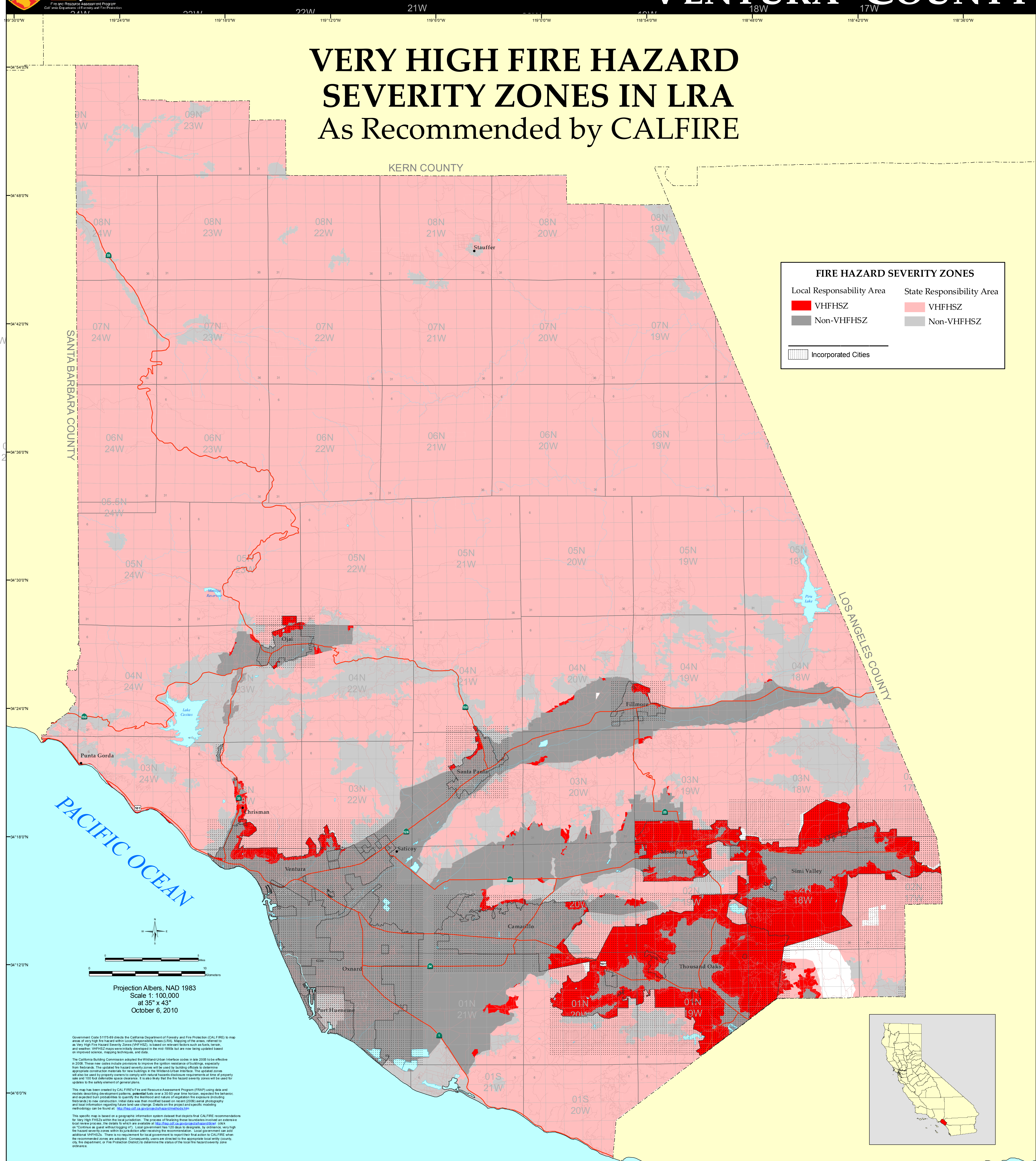


VERY HIGH FIRE HAZARD SEVERITY ZONES IN LRA As Recommended by CAL FIRE



FIRE HAZARD SEVERITY ZONES

Local Responsibility Area	State Responsibility Area
 VHFHSZ	 VHFHSZ
 Non-VHFHSZ	 Non-VHFHSZ

Incorporated Cities

Projection Albers, NAD 1983
Scale 1: 100,000
at 35" x 43"
October 6, 2010

Government Code 51175.69 directs the California Department of Forestry and Fire Protection (CAL FIRE) to map areas of very high fire hazard within Local Responsibility Areas (LRA). Mapping of these areas, referred to as Very High Fire Hazard Severity Zones (VHFHSZ), is based on relevant factors such as fuels, terrain, and weather. VHFHSZ maps were initially developed in the mid-1990s but are now being updated based on improved science, mapping techniques, and data.

The California Building Commission adopted the Wildland-Urban Interface codes in late 2006 to be effective in 2008. These new codes include provisions to improve the ignition resistance of buildings, especially from firebrands. The updated fire hazard severity zones will be used by building officials to determine appropriate construction materials for new buildings in the Wildland-Urban Interface. The updated zones will also be used by property owners to comply with natural hazards disclosure requirements at time of property sale and 100-foot defensible space clearance. It is also likely that the fire hazard severity zones will be used for updates to the safety element of general plans.

This map has been created by CAL FIRE's Fire and Resource Assessment Program (FRAP) using data and methods describing development patterns, potential fuels over a 20-50 year time horizon, expected fire behavior, and expected burn probabilities to quantify the likelihood and nature of vegetation fire exposure (including firebrands) to new construction. Initial data was that modified based on recent (2009) aerial photography and local information regarding future land-use change. Details on the project and specific modeling methodology can be found at: <http://www.cdf.ca.gov/arcgis/arcserver/rest/info>

This specific map is based on a geographic information system dataset that depicts final CAL FIRE recommendations for Very High Fire Hazard Severity Zones within the local jurisdiction. The process of finalizing these boundaries involved an extensive local review process. The details to which are available at: <http://www.cdf.ca.gov/arcgis/arcserver/rest/info>. Click on "Continue as guest without logging in". Local government has 120 days to acknowledge, by ordinance, any high fire hazard severity zones within its jurisdiction after receiving the recommendation. Local government can add additional VHFHSZs. There is no requirement for local government to report their final action to CAL FIRE when the recommended zones are adopted. Consequently, users are directed to the appropriate local entity (county, city, fire department, or fire protection district) to determine the status of the local fire hazard severity zone ordinance.

