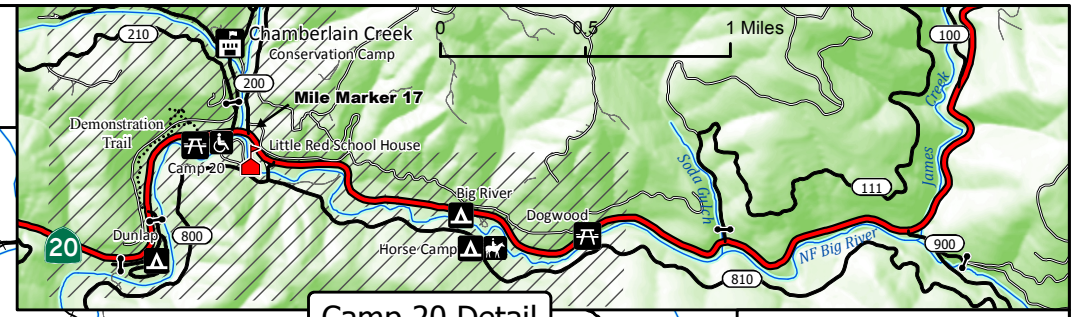


All visitors are responsible for knowing State Forest regulations and fees. Contact office for information.



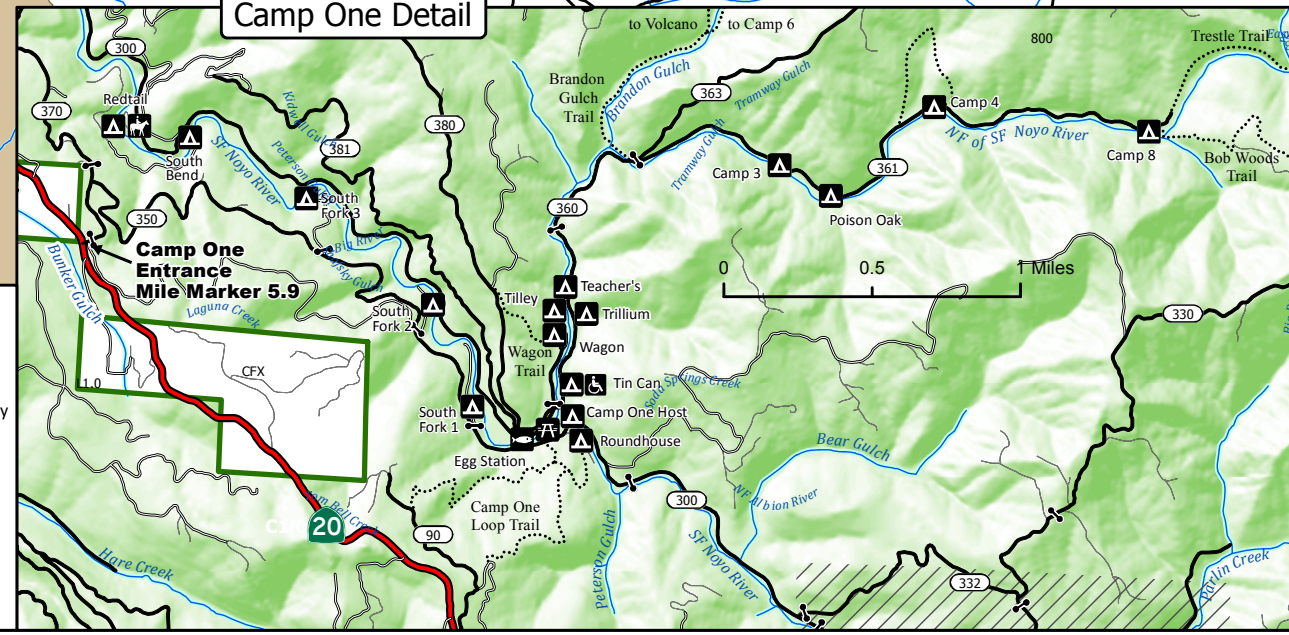
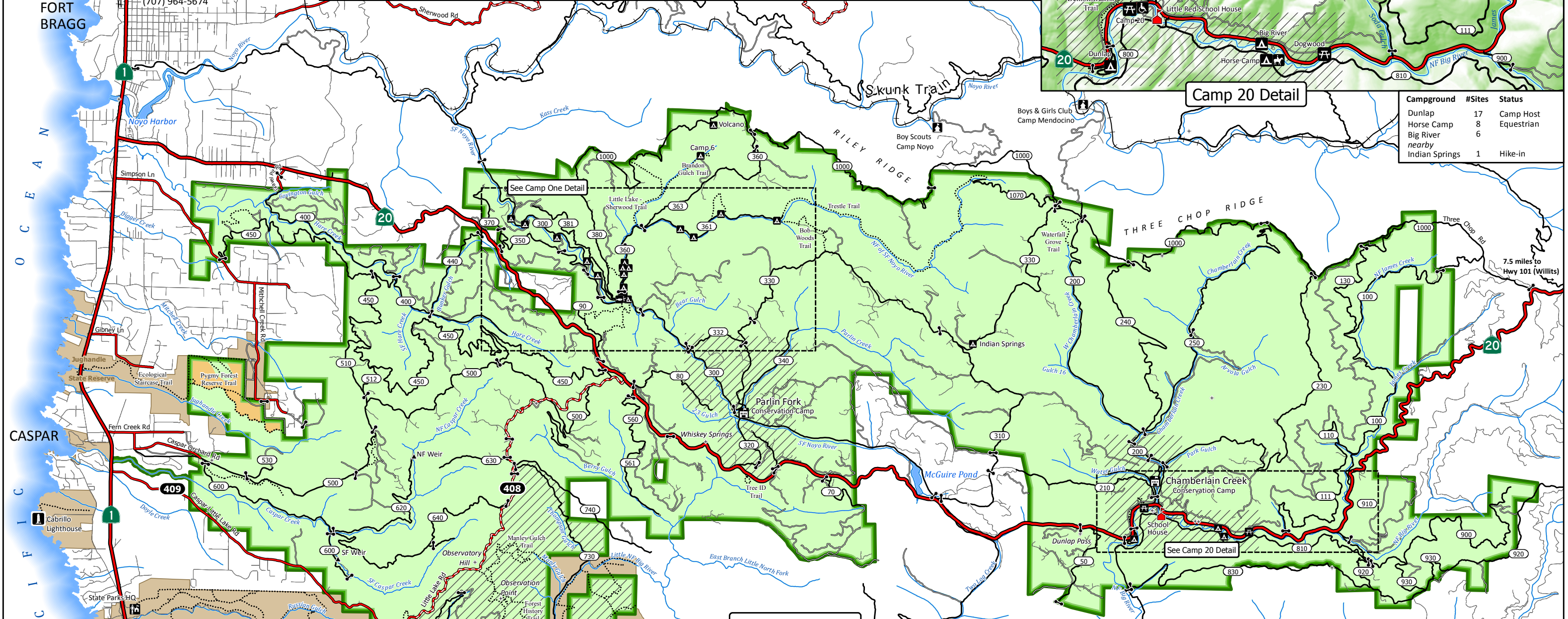
JACKSON DEMONSTRATION STATE FOREST

CALIFORNIA DEPARTMENT OF FORESTRY AND FIRE PROTECTION - MENDOCINO UNIT



Camp 20 Detail

Campground	#Sites	Status
Dunlap	17	Camp Host
Horse Camp	8	Equestrian
Big River nearby	6	
Indian Springs	1	Hike-in



Camp One Detail

Campground	#Sites	Status
Redtail	10	Equestrian
Wagon	5	
Roundhouse	3	
Tin Can	2	Wheelchair Access
Camp 3	1	Self-Contained Vehicle Only
Camp 4, 8	1	
Poison Oak	1	
South Bend	1	
South Fork 1-3	1	
Teacher's	1	
Tilley	1	Large Groups
Trillium	1	
Wagon nearby	1	
Camp 6	1	Hike-in, No Outhouse
Volcano	1	Hike-in

Legend:

- State Highway
- Notable County Rd (road dashed where not paved)
- Primary Forest Rd
- Secondary Rd
- Other Rd
- Trail
- Stream
- State Parks
- Pygmy Reserve
- State Forest
- Area closed to the use of fire arms

Icons:

- Historic School House
- CAL FIRE Station
- Campground (Fee Required)
- Day Use
- Horses Allowed
- Conservation Camp
- Wheelchair Access
- Egg Station
- Other Camp
- Caspar Weir
- Locked Gate
- No Public Vehicles

Notes:

- JDSF ROADS: are subject to closures
- GATES: other gates not displayed may be locked for public safety or natural resource protection
- CAMPGROUNDS: are all seasonal, have no potable water and include access to outhouse, picnic table, and fire ring unless otherwise noted.

Map Date: 1/20/2015
 Created for paper size: 11"x17"
 By: Shawn Headley (JDSF)