

NOTABLE TRAILS ON JACKSON DEMONSTRATION STATE FOREST

Trail guides can be found online at www.fire.ca.gov or at the Fort Bragg office located at 802 N Main St. Be sure to review closure information and the Active Timber Operations Map online prior to planning your trip. Watch for wildlife and poison oak, bring your own water, and be prepared for seasonal conditions/closures. Dogs are allowed on JDSF if they are confined or under restrictive control of owner or on a leash no longer than 6 feet. "Multiple" use trails are open to equestrians, mountain bikers and hikers. No ATVs or off-roading vehicles are allowed on JDSF.

Self-guided Trails (free vehicle parking areas at all trailheads)

1. Chamberlain Creek Demonstration Trail – 0.79 miles of trail; allowable uses are walking/hiking

The popular trail is located at Camp 20, halfway between Fort Bragg and Willits on Highway 20. The trailhead is located at the northwest part of the Camp 20 Day Use Area. It is really two trails in one, consisting of a short loop on gentle ground and a longer loop for those with more time to spend. The Short Trail takes about 15 minutes to walk and is a good place to stretch your legs after a long drive. Nine numbered posts combine with the trail guide to provide visitors an introduction to the redwood forest. Old-growth redwood are found along this trail as well as a number of the common plant species labeled for easy recognition. If interested in learning a bit more about the history of the redwoods and getting a bit more exercise, the Long Trail is the next step. This heads up the slope and presents an additional 18 informational stops. This trail is one of the most convenient hikes found in the State Forest. **(Guide available)**

2. Forest History Trail – 3.71 miles of trail; allowable uses are multiple

By far our most extensive and in-depth self-guided trail, the Forest History Trail is in the southwestern area of the State Forest. It has two trailheads, with the Upper Trailhead as the main access for public users. It is located at mile marker 6.85 on Little Lake Road (County Road 408) from Mendocino. The Lower Trailhead is near the beaver pond at the Mendocino Woodlands Camp and provides access for Camp visitors. This trail features 47 stops, including Observation Point, along its 4-mile length. This trail takes about 4 hours to complete and ranges in elevation from 275 to 995 feet. The guide presents five sections, each relating to a different part of the redwood forest: Redwood Ecology, Demonstration Forestry, the Native American Era, Early Logging Days, and the beginnings of Forest Management are discussed along the way. **(Guide available)**

2a Connecting to the Forest History Trail is the **Manly Gulch Trail**, which is popular with mountain bike riders and campers at the State Parks Mendocino Woodlands Camp along Big River. Information about the Woodlands Camp can be found here: <https://www.parks.ca.gov/pages/443/files/MendoWoodlandsSPWebLayout2013.pdf>

3. Tree Identification Trail – 0.12 miles of trail; allowable uses are walking/hiking

This is another quick and easy trail close to the highway. Located at mile marker 11 on Highway 20, the trailhead is found at a parking area on the south side of the road. This trail is approximately 0.12 miles and takes about 10 minutes to walk and was designed to demonstrate a few key points for identifying some common plants and trees found in the redwood community. The trail is slated for rehabilitation. **(Guide under revision)**

Recreational Trails

4. Camp One Loop Trail – 2.31 miles of trail; allowable uses are walking/hiking

This trail leaves from Camp One and makes two loops. The Short Loop is 0.7 miles long and the Long Loop is 3 miles in length. These trails are designed to provide an easily accessible day hike for this popular camping area. The loops traverse bridges, steep terrain, and forested slopes. The trailhead is located directly across from the California Department of Fish and Wildlife's Egg Collection Station on Road 350 where there is plenty of parking. The Long Loop winds up the hill through stands of timber to Road 90. The trail travels east along the road through a selectively harvested area and joins with the Little Lake – Sherwood Trail. The trail then turns left and heads back down the old Camp One Road, eventually turning off the old road and leading back down to the trailhead. The Short Loop uses the same starting point and veers left to the old Camp One Road in Roundhouse campground. From there it follows the old road into the eastern end of Camp One and Road 350.

5. Waterfall Grove Trail – 0.74 miles of trail; allowable uses are walking/hiking

This is probably the most popular trail in the State Forest. The Waterfall Grove is a reserve of virgin old-growth redwood graced by the 25-foot Chamberlain Creek Waterfall. There are two different access points for the trail. For the shorter trail, there is a wooden staircase on the left side of the road. The waterfall and grove are 0.2 miles from this point. The trail is fairly steep. This is a beautiful day use area and an excellent spot for relaxation and reflection. The trailhead is located on

Road 200, 4.5 miles north of Highway 20. Road 200 starts at Camp 20, just east of the Chamberlain Creek Highway bridge and is easy to stay on by following the signs toward the SF Boys & Girls Camp Mendocino. An easy turn-around is located just ahead at the junction of Roads 200 and 1000. The longer trail is found by parking at the intersection of Road 200 and Road 1000, and proceeding south through the flat area on the west side of Road 200. This trail is 0.8 miles in length and provides the opportunity to view the old-growth grove as you are descending. There are some steep sections but both trails are in good shape. A loop can be made by walking along Road 200 to return to your starting point.

6. Bob Woods Trail – 1.21 miles of trail; allowable uses are multiple

The Bob Woods Trail crosses a lovely, open meadow of grasses and wildflowers. This trail starts near Camp 8 and proceeds up the hill, along the ridge and into the Bob Wood's Opening. The opening is several acres of meadow surrounded by the redwood/Douglas-fir forest. The trail is 1.2 miles in length and connects to Road 330. This road is generally closed to vehicular traffic. Although not an easy grade, this trail is good for hiking, mountain biking, and equestrian traffic. The Bob Woods trailhead is accessed by traveling Highway 20 to mile marker 5.9 and turning north onto Road 350. Follow this road down to the Egg Collection Station and cross the Noyo River. Proceed up Road 360 (north) until reaching the gate just past Teachers campground. The trailhead is approximately 3.4 miles from the junction of the aforementioned roads. A suggestion is to ride a bike to the trailhead and then hike. The road follows the river and provides an easy scenic ride.

7. Trestle Trail – 4.31 miles of trail; allowable uses are multiple; trail closes in wet season

This historic trail follows one of the logging railroads and offers JDSF's most extensive group of standing trestles. The trail is 4.3 miles in length. In addition to the trestles, the sites of two logging camps and a small waterfall may be seen along this route. The lower trailhead for this trail is 3.7 miles from the junction of Roads 361 and 363, as this trailhead is approximately 0.3 miles further down the road from the Bob Woods Trail. This trail is minimally maintained and features some sections which are steep and have treacherous footing. Poison oak is abundant along the western 1.5 miles of the trail. The upper trailhead can be accessed via Road 1070 (1.9 miles) and Road 330 (5.3 miles), and a loop can be made using the Bob Woods Trail. There is one hike-in campsite at Indian Springs (Road 330) (\$15/night; self-registration via Iron Ranger at either Camp One or Dunlap/Big River). This trail is memorable and is the closest thing to a backcountry experience as can be found on JDSF.

8. Little Lake – Sherwood Road Trail – 12.74 miles of trail; allowable uses are multiple

This route connects Little Lake Road in Mendocino (Road 409) to Sherwood Road east of Fort Bragg by following a series of logging roads which traverse through JDSF. It is acceptable for hiking, equestrians, and mountain biking for most of its length and provides users a look at the many aspects of a working forest. This route also ties into the Sherwood Rd. – Willits Trail. This trail is difficult to follow and is poorly maintained. The following is an attempt to provide direction to keep you moving along the route. Trail markers take the form of brown signs on steel posts with directional arrows, signs displaying a horseshoe and directional arrow, and wooden posts with directional arrows. It's best to rely on a detailed State Forest map (for sale for \$5 in the Fort Bragg office, or online for download). The southern-most trailhead is found on Little Lake Road at mile marker 2.78. Follow the short trail until you reach Road 771, turn right, and proceed to the junction of Roads 771 and 770. Turn left onto 770 and follow the road as it winds through pygmy forest. Stay on Road 770 until you see the Little Lake – Sherwood Trail sign. Turn left and follow the trail down and across the creek. Head up the trail and turn left onto Road 760. This road continues up and meets County Road 409. Cross 409 and follow the trail markers. Eventually you arrive at the junction of Road 700 and Road 408. From this point, you remain on Road 408 until you reach Highway 20. (Note: Roads 408 and 500 end up at Highway 20; 408 has more hills but is more scenic). The trail parallels the highway and travels west to Road 90. The trail follows Road 90 for 0.6 miles and then turns right and follows the old Camp One road down to the Noyo River. Cross the Noyo and stay on Road 360, turn left on Road 362, and up 362 to Road 1000. The trail leaves the junction of Road 1000 and Road 362. From here, the trail crosses private land and eventually arrives at Sherwood Road.

9. Pygmy Forest Reserve Trail – 4.51 miles of trail; allowable uses are multiple

Pygmy Forest is a registered natural landmark set aside to preserve areas of this distinctive forest. The podsol soil type, unique to this area, is noted for high acidity, poor drainage, and poor nutrition. These conditions limit root development and cause the stunted growth of conifers such as bolander pine, pygmy cypress, and other unusual plant species. The Pygmy Forest Reserve Trail can be found on the southwest portion of the forest along the Ecological Staircase Trail starting at the Department of Parks and Recreation Jughandle State Reserve off Highway 1 ending in the JDSF. The Department of Parks and Recreation publishes a brochure specific to the Ecological Staircase Trail which can be found here: https://www.parks.ca.gov/pages/441/files/Jughandle_Brochure2016A.pdf

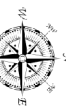


JACKSON DEMONSTRATION STATE FOREST



NOTABLE TRAILS MAP

1 in = 1 miles
0 0.5 1 2 Miles

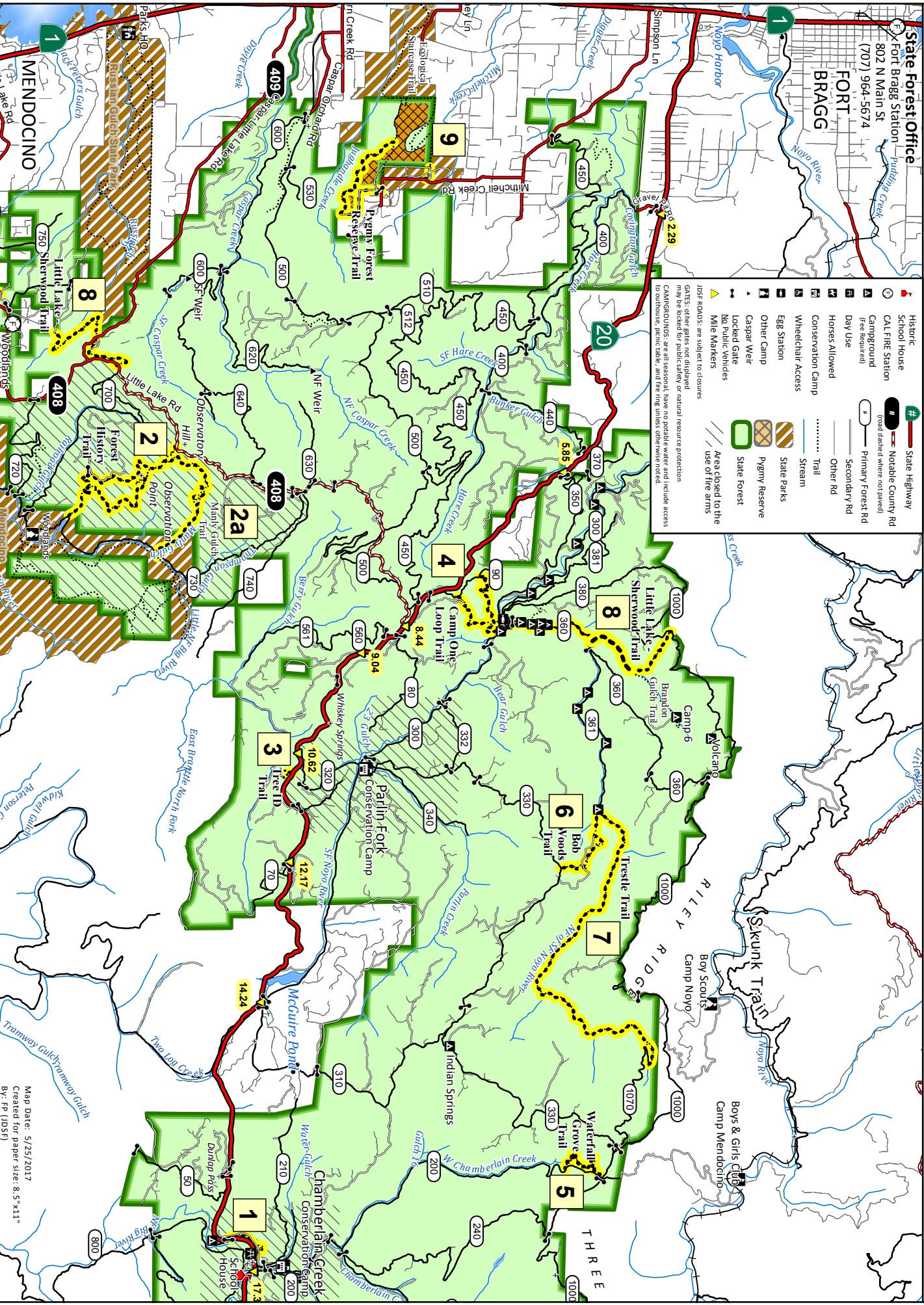


CALIFORNIA DEPARTMENT OF FORESTRY AND FIRE PROTECTION - MENDOCINO UNIT

State Forest Office
Fort Bragg Station
802 N Main St
(707) 964-5674

FORT BRAGG

- Historic: School House, CAL Fire Station, Campground (fee required), Day Use, Horses Allowed, Conservation Camp, Wheelchair Access, Egg Station, Other Camp, Caspar Weir, Locked Gate, No Public Vehicles, Mile Markers
- State Highway (red line), Notable County Rd (black line), Primary Forest Rd (dashed line), Secondary Rd (dotted line), Other Rd (thin line), Trail (dotted line)
- Stream (blue line), State Parks (hatched area), Pygmy Reserve (cross-hatched area), State Forest (green area), Area closed to the use of fire arms (hatched area)
- Gate (triangle symbol): JSF Roads are subject to closures; gates, other gates not displayed may be locked for public safety or natural resource protection; CAMPGROUNDS are all seasonal, have no potable water and include access to outdoors, picnic tables, and fire rings unless otherwise noted.



Map Date: 5/25/2017
Created for paper size: 8.5"x11"
By: FP (JDSF)