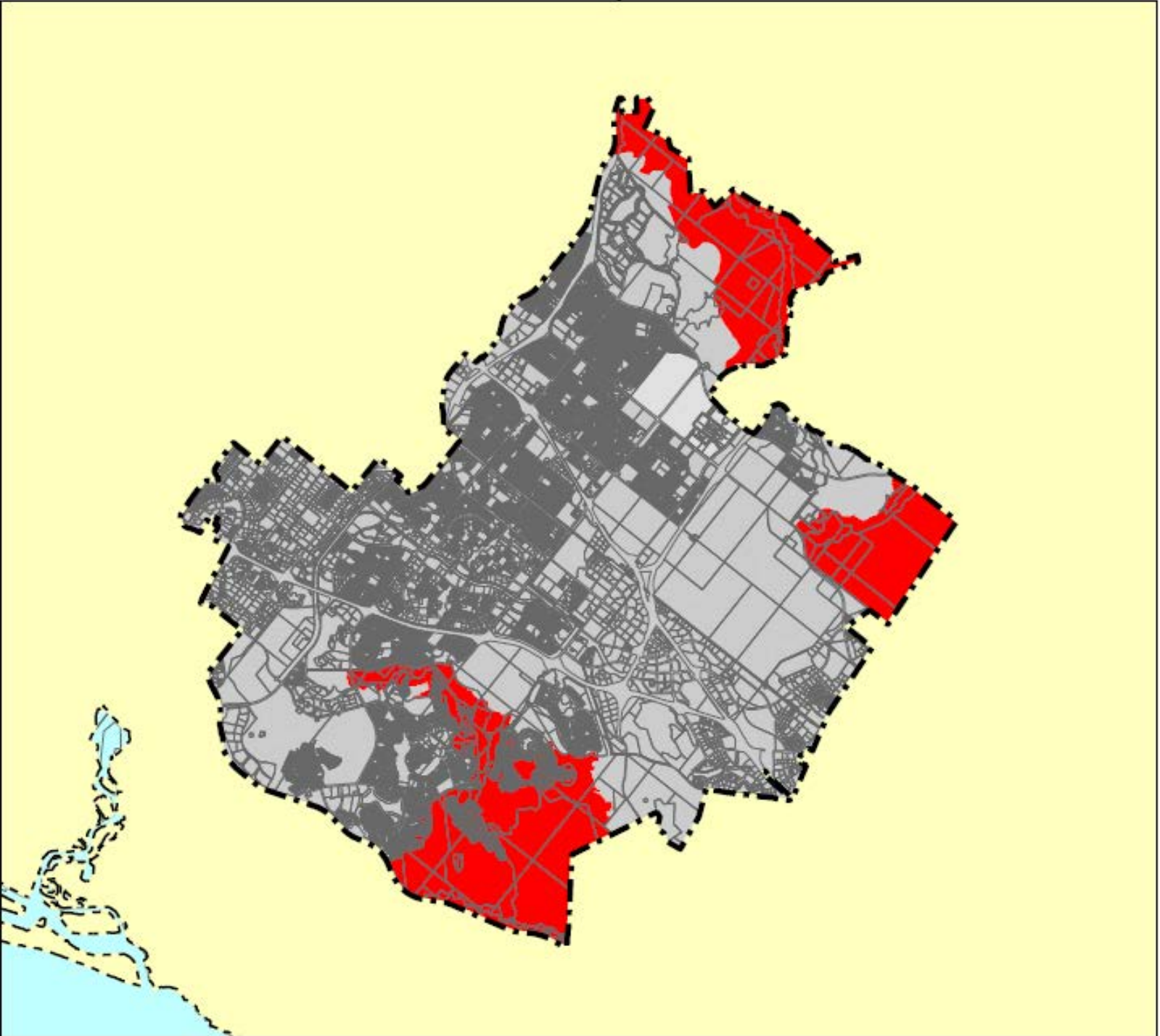


Very High Fire Hazard Severity Zones in LRA



Fire Hazard Severity Zones

Local Responsibility Area	State or Federal Responsibility Area
■ VHFHSZ	■ VHFHSZ
■ Non-VHFHSZ	■ Non-VHFHSZ

- - - City Boundary
 - - - County Boundary

Government Code 51755.60 directs the California Department of Forestry and Fire Protection (CAL FIRE) to identify areas of very high fire hazard severity zones within Local Responsibility Areas (LRAs). Reporting of areas subject to very high fire hazard severity zones (VHFHSZs) is based on data and models generated from the 2005-2006 year fire hazard and their associated exposure to fuels, and reported from parcel-level to identify the location and extent of exposure to increased fire hazard severity. Details on the origin and specific modeling methodology can be found at <http://www.firehazard.org/California/veryhighfirehazardseverityzones/>. Local Responsibility Area VHFHSZ maps are publicly available at <http://www.firehazard.org/California/veryhighfirehazardseverityzones/>.

In late 2005 to be effective in 2008, the California Building Commission adopted California Building Code Chapter 7A, requiring new buildings to meet VHFHSZs to use specific building construction methods and materials. These fire codes include provisions to improve the ignition resistance of building materials from hazardous. The updated very high fire hazard severity zones will be used by building officials for new building permits in LRA. The updated zones will also be used to identify projects whose permits must comply with certain fire code requirements at time of property sale and 100-foot defensible space requirements. It may be that the hazard severity zones will be used for updates to the safety zones or permit process.

This specific map is based on a geographic information system dataset that depicts the CAL FIRE recommendations for very high fire hazard severity zones. The dataset of hazard severity boundaries is available from the California Department of Forestry and Fire Protection (CAL FIRE) at <http://www.firehazard.org/California/veryhighfirehazardseverityzones/>. Local government may also utilize VHFHSZs data to help determine fire hazard severity zones for their own purposes. Local government and other authorized VHFHSZs data is not intended for use in determining fire hazard severity zones for CAL FIRE. The data recommendations are subject to change. Consequently, users are directed to the appropriate data entity (county, city, fire district, or fire protection district) to determine the status of the local fire hazard severity zone information.

This map was developed using data products such as parcel and city boundaries provided by local government agencies. In certain cases, this includes copyrighted geographic information. The maps are for display purposes only - questions and requests related to parcel or city boundary data should be directed to the appropriate local government entity.

Projection: Albers, NAD 1983
 Scale: 1:30,000
 at 36" x 36"
 October, 2011